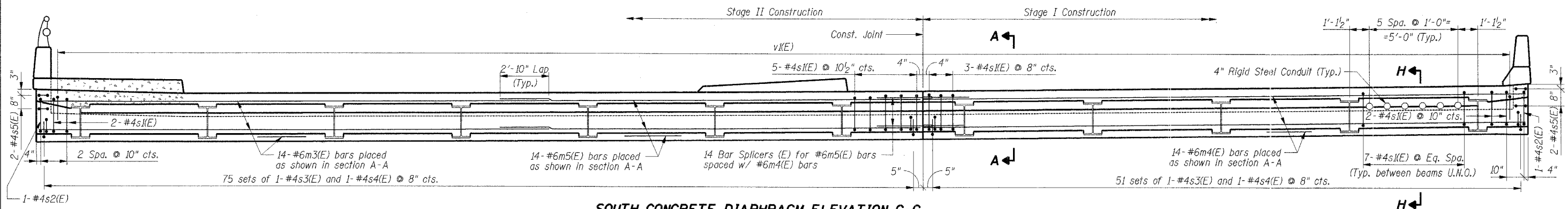
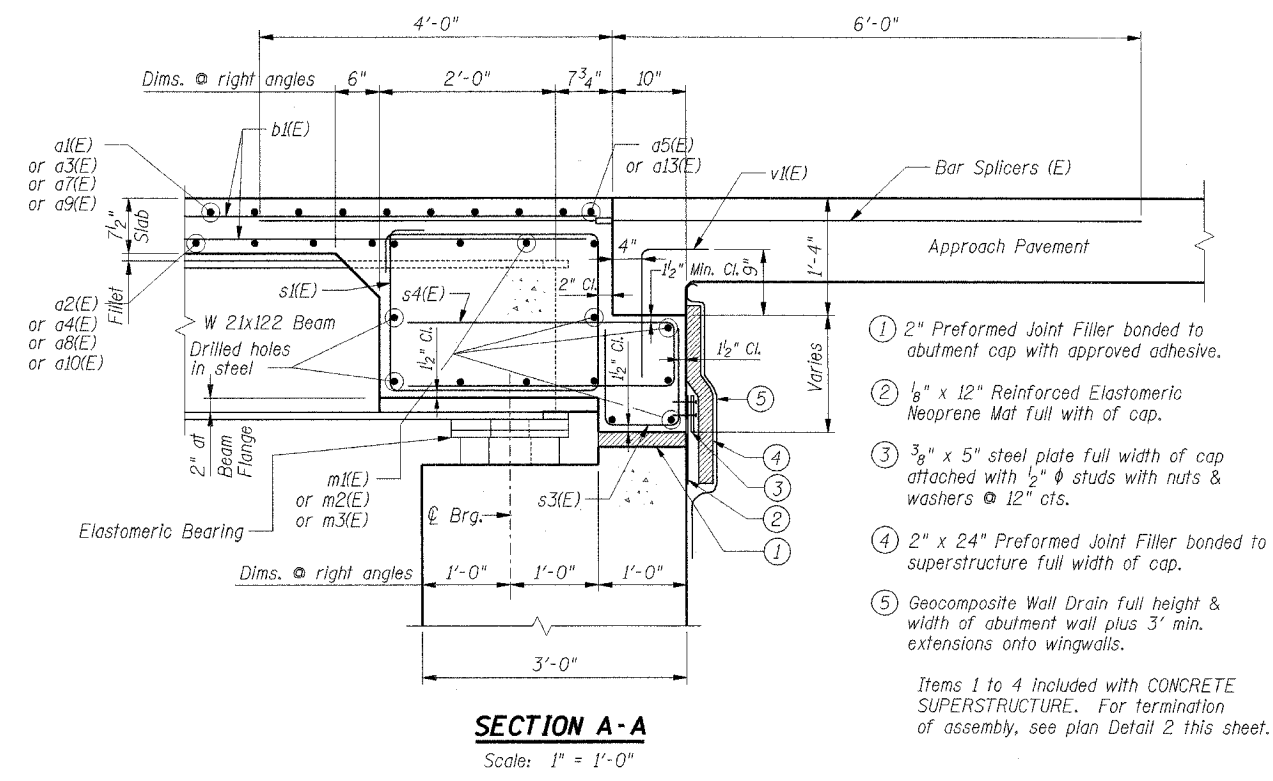


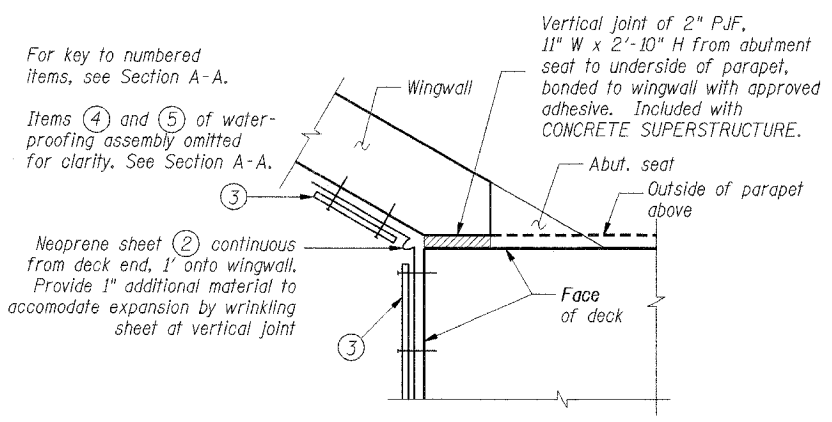
NORTH CONCRETE DIAPHRAGM ELEVATION B-B
Scale: $\frac{3}{8}'' = 1'-0''$



SOUTH CONCRETE DIAPHRAGM ELEVATION C-C
Scale: $\frac{3}{8}'' = 1'-0''$

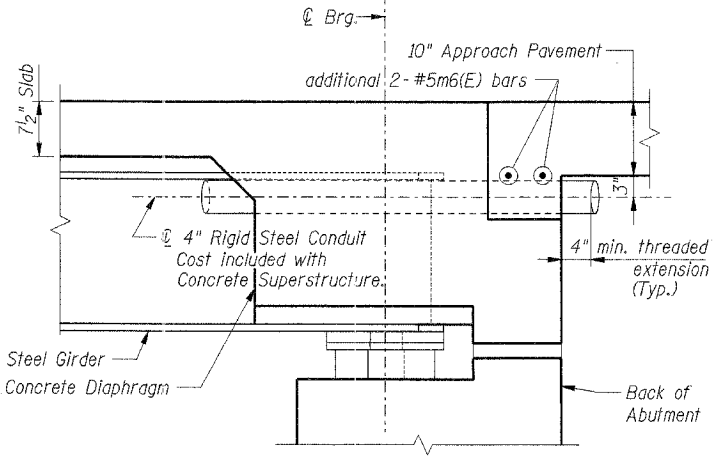


SECTION A-A
Scale: $1'' = 1'-0''$



DETAIL PLAN 2
Deck-to-abutment joint and waterproofing termination

- For key to numbered items, see Section A-A.
Items ④ and ⑤ of waterproofing assembly omitted for clarity. See Section A-A.
- ① 2" Preformed Joint Filler bonded to abutment cap with approved adhesive.
 - ② $\frac{1}{8}'' \times 12''$ Reinforced Elastomeric Neoprene Mat full width of cap.
 - ③ $\frac{3}{8}'' \times 5''$ steel plate full width of cap attached with $\frac{1}{2}'' \phi$ studs with nuts & washers @ 12" cts.
 - ④ 2" x 24" Preformed Joint Filler bonded to superstructure full width of cap.
 - ⑤ Geocomposite Wall Drain full height & width of abutment wall plus 3' min. extensions onto wingwalls.
- Items 1 to 4 included with CONCRETE SUPERSTRUCTURE. For termination of assembly, see plan Detail 2 this sheet.
- Notes:**
1. Reinforcement Bars designated (E) shall be epoxy coated.
 2. Bars indicated thus 20 x 3-#5 etc. indicates 20 lines of bars with 3 lengths per line.
 3. For Bar List, Bill of Material and Bar details, see Sheet S-13.
 4. Work this Sheet with Sheet S-08.
 5. The Stirrups s1(E), s2(E), s3(E) and s4(E) bars shall be placed parallel to the beams. Spacing for these bars shall be at right angles to the beams.



SECTION H-H
Scale: $1'' = 1'-0''$

SHT. S-09 REVISIONS	
NAME	DATE

VILLAGE OF NEW LENOX
F.A.U. (0369) CEDAR ROAD OVER HICKORY CREEK
WILL COUNTY

CONCRETE DIAPHRAGMS

SCALE: AS NOTED
DATE: 07/01/05

DRAWN BY: FZD
CHECKED BY: KPS

TENG
TENG & ASSOCIATES, INC.
ENGINEERS/ARCHITECTS/PLANNERS
282 N. MICHIGAN AVE., CHICAGO, IL 60610
TELEPHONE 312.943.6000

I:\PROJECTS\0369\0369-00025-00-BR\CONCRETE\0369-00025-00-BR-118.DWG
 7/9/2005, 16:07:58
 S:\DOCUMENT\0369\STRUCT\CONCRETE\0369-00025-00-BR-118.DWG
 ROSSPF