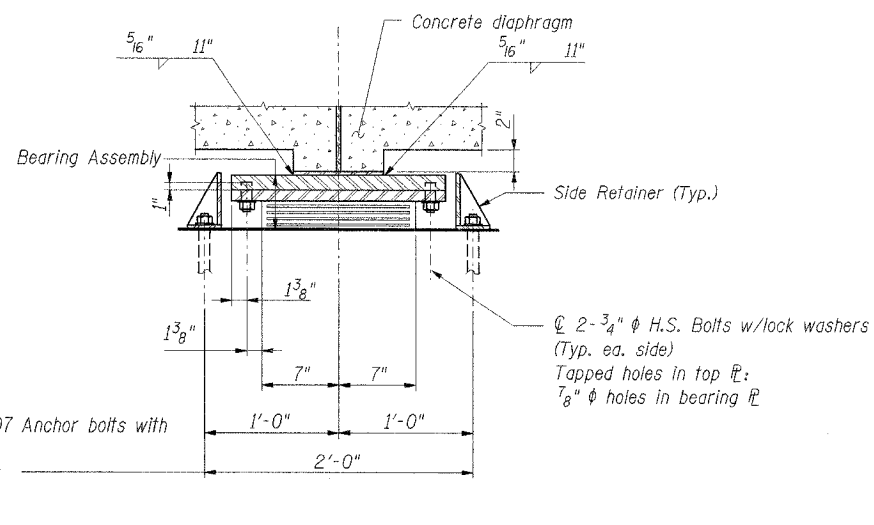
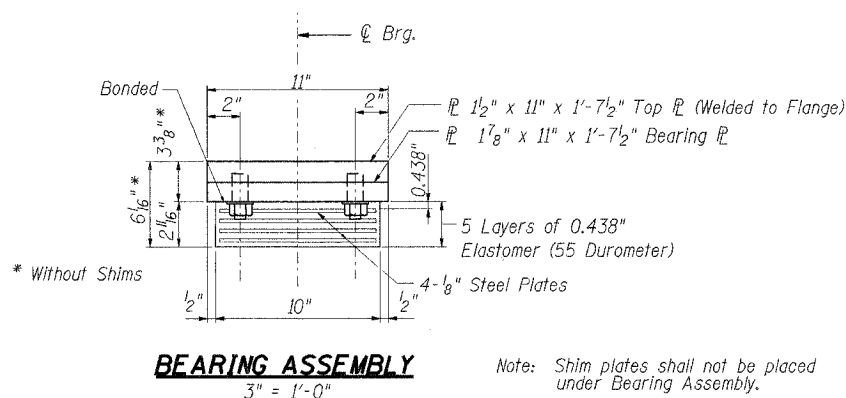


**ELEVATION AT ABUT.**  
1/2" = 1'-0"

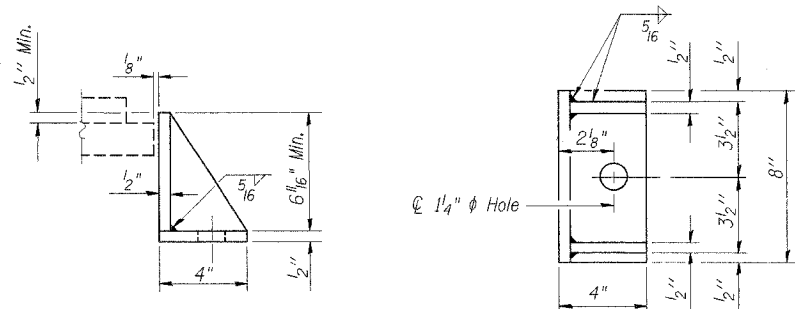


**SECTION A-A**  
1/2" = 1'-0"

**TYPE I ELASTOMERIC EXP. BRG.**  
(For Semi-Integral Abutment)

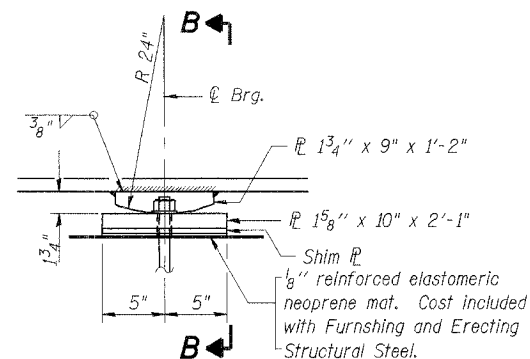


**BEARING ASSEMBLY**  
3" = 1'-0"

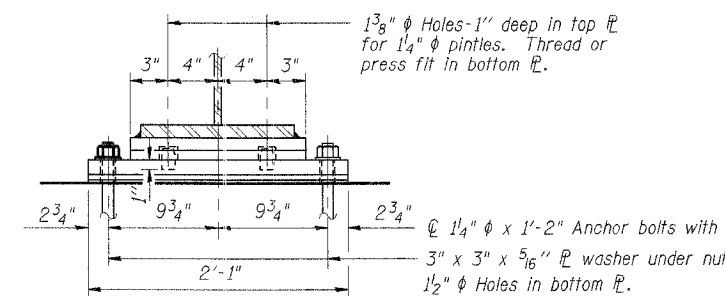


**SIDE RETAINER**

24 required. Weight of steel included with total weight of structural steel on Sheet S-02. Equivalent rolled angle with stiffeners will be allowed in lieu of welded plates. Weight included with Structural Steel.



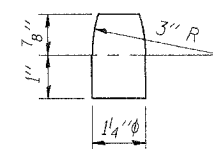
**ELEVATION AT PIER**



**SECTION B-B**

**FIXED BEARING**

12 Required. Weight of steel included with total weight of structural steel on Sheet S-02.



**PINTLE**

Bent	Beam			
	5	7	9	10
S. Abut.	5/8"	1/2"	1/2"	1/8"

(Fill plates shall have plan dimensions 11" x 1'-7 1/2" with thickness as shown above)

**FILL PLATE THICKNESS**

Notes:  
Anchor bolts at fixed bearings may be built into the masonry.  
See sheet S-27 for Anchor Bolt installation.  
Steel plates for bearing assemblies shall be AASHTO M270 Grade 50W.

**BILL OF MATERIAL**

Item	Unif	Total
Elastomeric Bearing Assembly Type I	Each	24

SHT. S-15

REVISIONS	
NAME	DATE

VILLAGE OF NEW LENOX  
F.A.U. (0369) CEDAR ROAD OVER HICKORY CREEK  
WILL COUNTY

**BEARING DETAILS**

SCALE: AS NOTED  
DATE: 07/01/05  
DRAWN BY: FZD  
CHECKED BY: KPS

**TENG**  
TENG & ASSOCIATES, INC.  
ENGINEERS/ARCHITECTS/PLANNERS  
215 N. WASHINGTON AVE. CHICAGO, ILL. 60601  
TELEPHONE: 312.642.9000