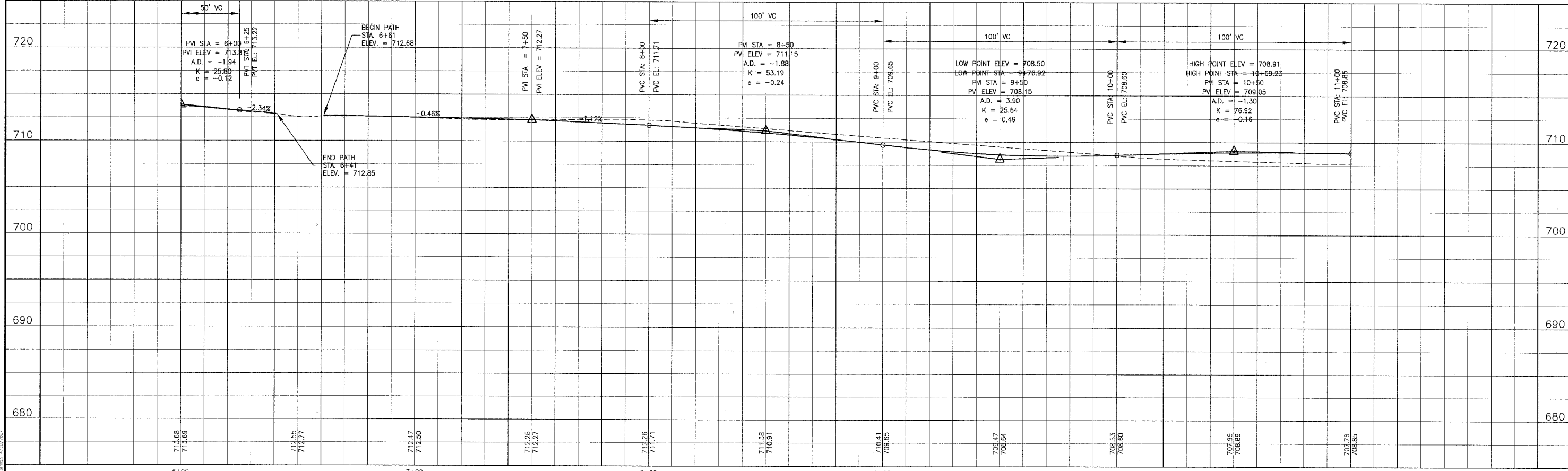
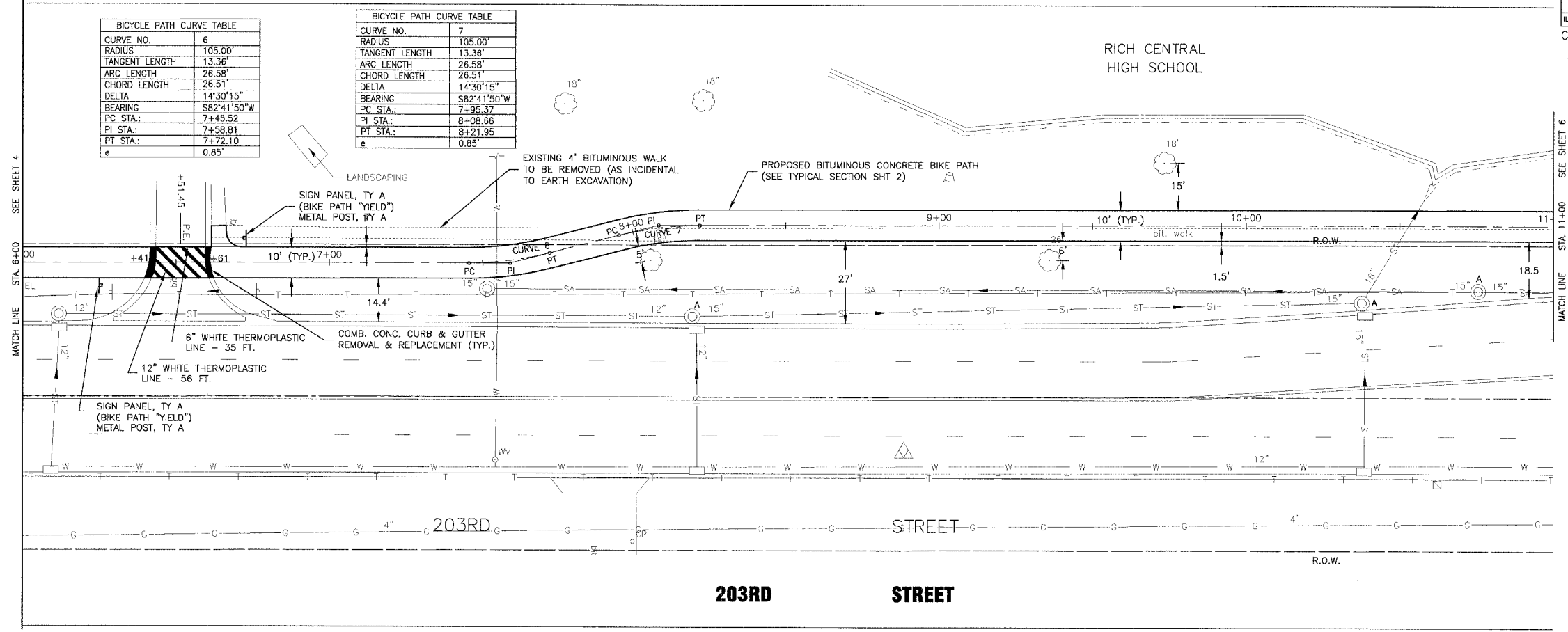




SCALE: 1" = 20'



CONSULTANTS

\* - REFER TO EQUIPMENT MANUFACTURER'S SHOP DRAWINGS

REV. NO.	DATE	DESCRIPTION
1	02-27-06	PER IDOT REVIEW

50686BIKPRF NJP 02-27-06 13:30

**BAXTER & WOODMAN**  
Consulting Engineers

*Baxter & Woodman*  
Crystal Lake, Illinois 815.459.1260  
Burlington, Wisconsin 262.763.7834  
Mukwonago, Illinois 708.478.2090  
DeKalb, Illinois 815.787.3111  
Craigslist, Illinois 847.223.6088  
Rockford, Illinois 815.489.1551

**VILLAGE OF OLYMPIA FIELDS, ILLINOIS**  
203RD STREET BIKEWAY

**203rd STREET**  
STA. 6+00 TO STA. 11+00  
PLAN AND PROFILE

DESIGNED BY MCU	SCALE AS NOTED
DRAWN BY NJP	PROJECT NO. 050686
CHECKED BY NJP	SHEET NO. 5 OF 12
DATE 12-12-05	

COPYRIGHT © 2006 BY BAXTER & WOODMAN, INC. LICENSE NO. 156-00131 - EXPRESS 1/22/07