

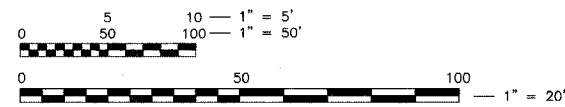
INDEX OF SHEETS

SHEET NO.	DESCRIPTION
1	COVER SHEET
2	GENERAL NOTES
3	SUMMARY OF QUANTITIES
4	TYPICAL SECTIONS
5	ALIGNMENT & BENCHMARKS
6-7	ROADWAY IMPROVEMENT PLANS
8	MAINTENANCE OF TRAFFIC
9	PAVEMENT MARKING AND SIGNING PLAN
10	EROSION CONTROL AND LANDSCAPING PLANS
11-14	CROSS SECTIONS
15-21	ROADWAY DETAILS
22-23	TEMPORARY TRAFFIC SIGNAL PLANS
24-25	TEMPORARY TRAFFIC SIGNAL INTERCONNECT PLANS
26-29	PERMANENT TRAFFIC SIGNAL PLANS
30-31	TRAFFIC SIGNAL INTERCONNECT PLANS
32	MAST ARM MOUNTED STREET NAME SIGNS
33-36	TRAFFIC SIGNAL DETAILS

INDEX OF STATE STANDARDS

NO.	DESCRIPTION
000001-04	STANDARD SYMBOLS, ABBREVIATIONS, AND PATTERNS
280001-02	TEMPORARY EROSION CONTROL SYSTEMS
424001-04	SIDEWALK RAMPS ACCESSIBLE TO THE DISABLED
442201-01	CLASS C AND D PATCHES
542606	REINFORCED CONCRETE PIPE TEE
602001	CATCH BASIN TYPE A
602011	CATCH BASIN TYPE C
602401-01	MANHOLE TYPE A
604001-02	FRAME AND LIDS, TYPE 1
604006-02	FRAME AND GRATE, TYPE 3
604036-01	GRATE, TYPE B
606001-02	CONCRETE CURB AND COMBINATION CONCRETE CURB AND GUTTER
701101-01	OFF-RD OPERATIONS, MULTILANE, 15' TO 24" FROM PAVEMENT EDGE
701106-01	OFF-RD OPERATIONS, MULTILANE, MORE THAN 15' AWAY
701501-03	URBAN LANE CLOSURE, 2L, 2W, UNDIVIDED
701606-04	URBAN LANE CLOSURE, MULTILANE, 2W WITH MOUNTABLE MEDIAN
701701-04	URBAN LANE CLOSURE, MULTILANE INTERSECTION
701801-03	LANE CLOSURE, MULTILANE, 1W OR 2W, CROSSWALK OR SIDEWALK CLOSURE, FOR SPEEDS < 45 MPH
702001-06	TRAFFIC CONTROL DEVICES
720001	SIGN PANEL MOUNTING DETAILS
720006	SIGN PANEL ERECTION DETAILS
780001-01	TYPICAL PAVEMENT MARKINGS
805001	ELECTRICAL SERVICE INSTALLATION DETAILS
814001	CONCRETE HANDHOLES
814006	DOUBLE HANDHOLES
857001	STANDARD PHASE DESIGNATION DIAGRAMS AND PHASE SEQUENCES
877001-02	STEEL MAST ARM ASSEMBLY AND POLE
878001-04	CONCRETE FOUNDATION DETAILS
880001	SPAN WIRE MOUNTED SIGNALS AND FLASHING BEACON INSTALLATION
880006	TRAFFIC SIGNAL MOUNTING DETAILS
886001	DETECTOR LOOP INSTALLATIONS
886006	TYPICAL LAYOUT FOR DETECTION LOOPS

FEDERAL AID DESIGN ENGINEER: ABIGAIL BRINKS 847-705-4233 SCHAMBURG, IL
CONSULTANT ENGINEER: JON VANA, P.E. CIVILTECH ENGINEERING, INC.



FULL SIZE PLANS HAVE BEEN PREPARED USING STANDARD ENGINEERING SCALES. REDUCED SIZED PLANS WILL NOT CONFORM TO STANDARD SCALES. IN MAKING MEASUREMENTS ON REDUCED PLANS, THE ABOVE SCALES MAY BE USED.



1-800-892-0123

CONTRACT NO. 83852

THE "STANDARD SPECIFICATIONS FOR ROAD AND BRIDGE CONSTRUCTION", ADOPTED JANUARY 1, 2002 BY THE ILLINOIS DEPARTMENT OF TRANSPORTATION, SHALL GOVERN THIS WORK.

STATE OF ILLINOIS
DEPARTMENT OF TRANSPORTATION
DIVISION OF HIGHWAYS

PLANS FOR PROPOSED FEDERAL AID PROJECT

F.A.P. ROUTE 21 (U.S. ROUTE 20/LAKE STREET)

AT F.A.U. ROUTE 3809 (SPRINGFIELD DRIVE)

SECTION 05-00050-00-CH

PROJECT NO. F-0021(068)

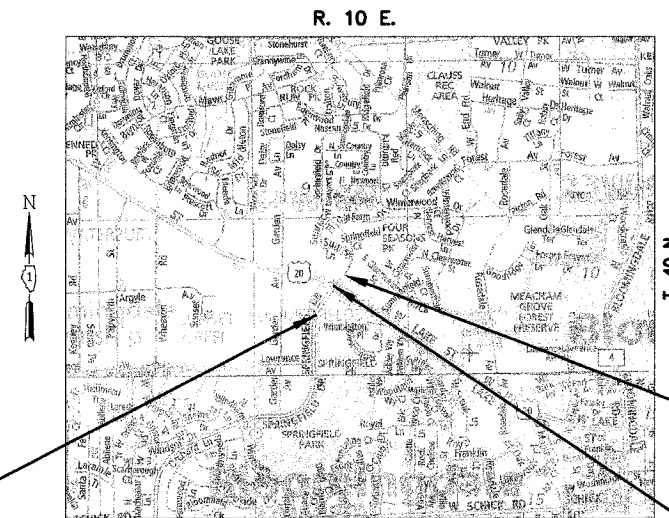
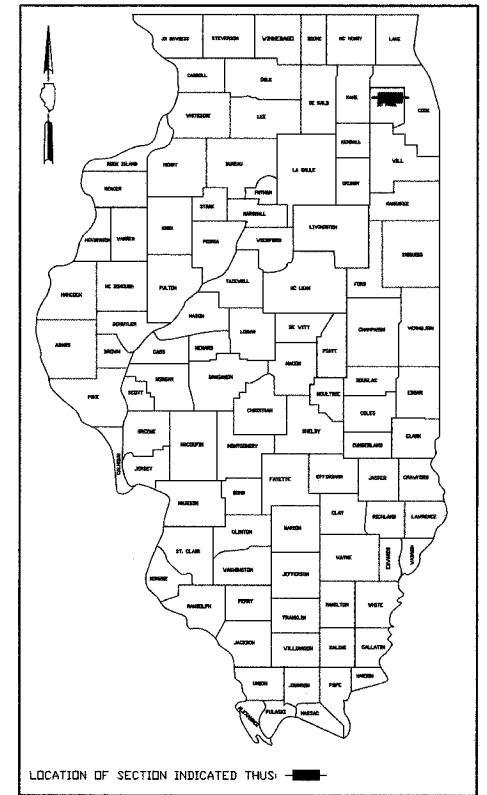
**WIDENING, RESURFACING,
AND TRAFFIC SIGNAL MODERNIZATION
DU PAGE COUNTY**

C-91-226-05

F.A.I.D. DISTRICT NO.	SECTION	COUNTY	TOTAL SHEETS	SHEET NO.
7	05-00050-00-CH	DUPAGE	36	1

COVER SHEET

FED. ROAD DISTRICT NO. 7 ILLINOIS FED. AID PROJECT F-0021(068)
CONTRACT NO. 83852



LOCATION MAP (NOT TO SCALE)

IMPROVEMENT IS LOCATED IN THE VILLAGE OF BLOOMINGDALE AND THE VILLAGE OF ROSELLE.

PROJECT BEGINS STATION 24+65.46

PROJECT ENDS STATION 52+32.00

PROJECT OMISSION STATION 27+94.81 TO 48+51.99

PROJECT LENGTH:
SPRINGFIELD DRIVE = 768 FT. (0.145 MILE) (GROSS)
709 FT. (0.134 MILE) (NET)

DESIGN DESIGNATIONS:
SPRINGFIELD DRIVE - N. LEG 4,000(2030) • LOCAL COLLECTOR • 0.085(FD-20)
SPRINGFIELD DRIVE - S. LEG 9,000(2030) • LOCAL COLLECTOR • 0.11(FD-20)

DESIGN SPEEDS:
LAKE STREET - 45 MPH (POSTED SPEED = 40 MPH)
SPRINGFIELD DRIVE (N. LEG) - 30 MPH (POSTED SPEED = 25 MPH)
SPRINGFIELD DRIVE (S. LEG) - 40 MPH (POSTED SPEED = 35 MPH)

VILLAGE OF BLOOMINGDALE
APPROVED April 4 2006
David M. ...
DIRECTOR OF VILLAGE STREETS

STATE OF ILLINOIS
DEPARTMENT OF TRANSPORTATION
PASSED APRIL 6 2006
Charles Holt
BUREAU CHIEF OF LOCAL ROADS AND STREETS
SIGNED April 10 2006
Debra M. O'Keefe
DEPUTY DIRECTOR OF HIGHWAYS, REGION ENGINEER

REGISTERED P.E., STATE OF ILLINOIS
APRIL 4, 2006 30 Nov 2007
EXPIRES

PLANS PREPARED BY:
CIVILTECH
450 E. Devon Ave., Suite 300 - Itasca, Illinois 60143
Tel: 630.773.3900 - Fax: 630.773.3975
www.civiltechinc.com

PRINTED BY AUTHORITY OF THE STATE OF ILLINOIS