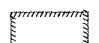
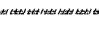


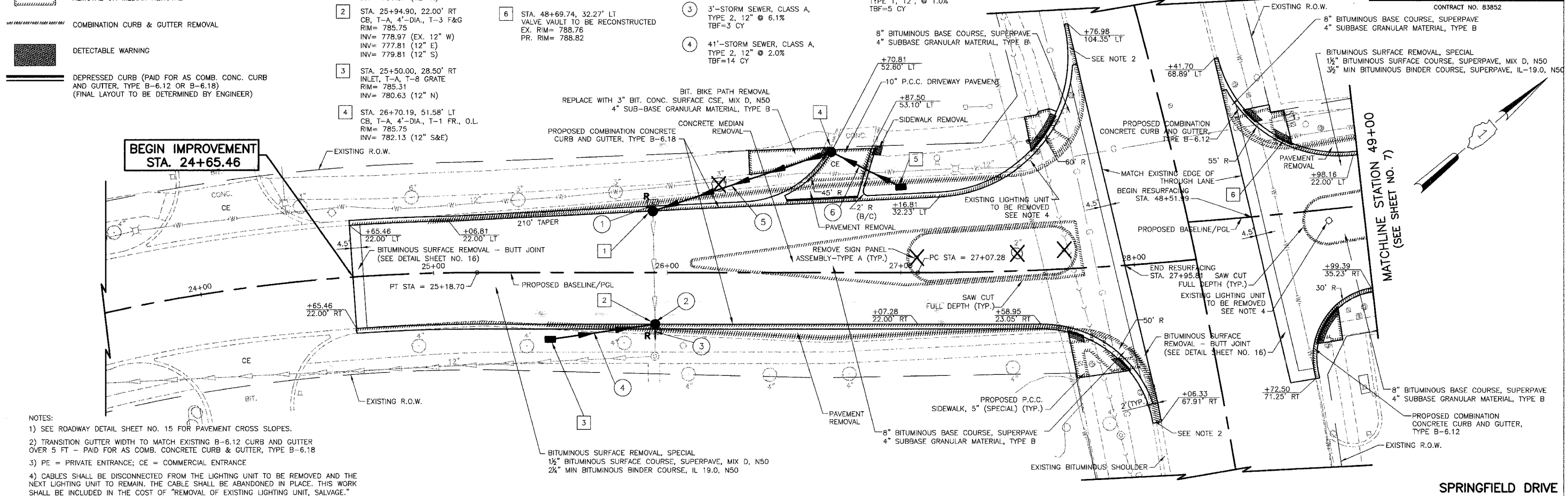


**LEGEND**

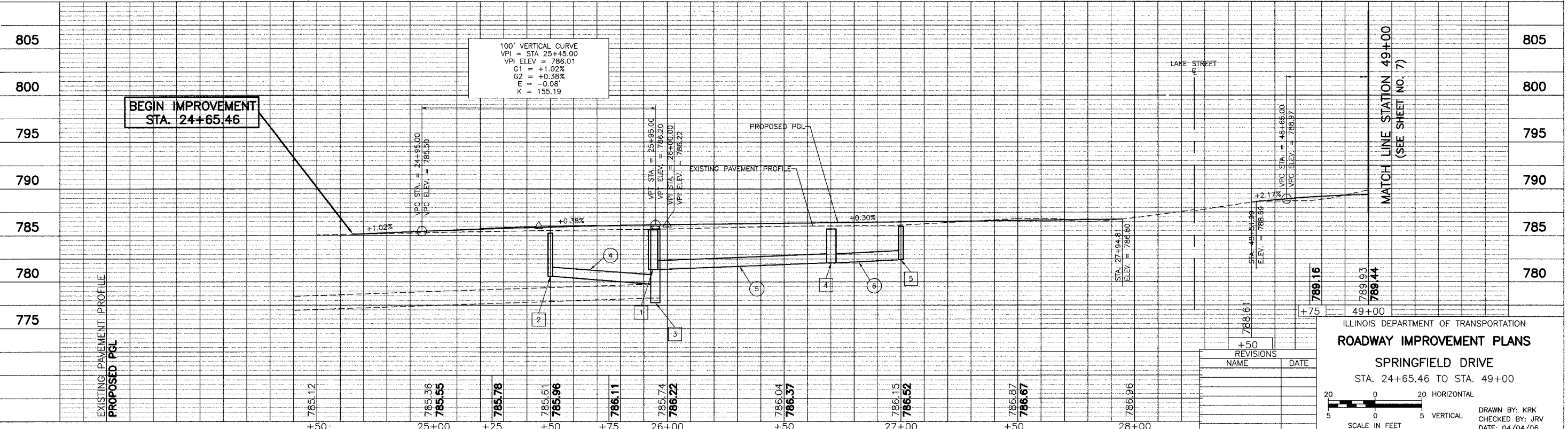
-  PAVEMENT REMOVAL, DRIVEWAY PAVEMENT REMOVAL, SIDEWALK REMOVAL OR MEDIAN REMOVAL
-  COMBINATION CURB & GUTTER REMOVAL
-  DETECTABLE WARNING
-  DEPRESSED CURB (PAID FOR AS COMB. CONC. CURB AND GUTTER, TYPE B-6.12 OR B-6.18) (FINAL LAYOUT TO BE DETERMINED BY ENGINEER)

- 1 STA. 25+93.89, 26.13' LT  
CE, T-A, 4'-DIA., T-3 F&G  
RIM= 785.67  
INV= 781.37 (EX. 12" E)  
INV= 781.37 (12" N)
- 2 STA. 25+94.90, 22.00' RT  
CB, T-A, 4'-DIA., T-3 F&G  
RIM= 785.75  
INV= 778.97 (EX. 12" W)  
INV= 777.81 (12" E)  
INV= 779.81 (12" S)
- 3 STA. 25+50.00, 28.50' RT  
INLET, T-A, T-8 GRATE  
RIM= 785.31  
INV= 780.63 (12" N)
- 4 STA. 26+70.19, 51.58' LT  
CB, T-A, 4'-DIA., T-1 FR., O.L.  
RIM= 785.75  
INV= 782.13 (12" S&E)
- 5 STA. 27+00.00, 36.60' LT  
INLET, T-A, T-8 GRATE  
RIM= 786.02  
INV= 782.45 (12" W)
- 6 STA. 48+69.74, 32.27' LT  
VALVE VAULT TO BE RECONSTRUCTED  
EX. RIM= 788.76  
PR. RIM= 788.82
- 1 3'-STORM SEWER REMOVAL, 12"
- 2 5'-STORM SEWER REMOVAL, 12"
- 3 3'-STORM SEWER, CLASS A, TYPE 2, 12" @ 6.1% TBF=3 CY
- 4 41'-STORM SEWER, CLASS A, TYPE 2, 12" @ 2.0% TBF=14 CY
- 5 76'-STORM SEWER, WATER MAIN QUALITY, TYPE 2, 12", @ 1.0% TBF=18 CY
- 6 32'-STORM SEWER, WATERMAIN QUALITY, TYPE 1, 12", @ 1.0% TBF=5 CY

FAIR	SECTION	COUNTY	TOTAL SHEETS	SHEET NO.
3809	05-00050-00-CH	DUPAGE	36	6
ROADWAY IMPROVEMENTS PLANS				
FED. ROAD DISTRICT NO. 7	ILLINOIS	FED. AID PROJECT F-0021(068)	CONTRACT NO. 83852	



- NOTES:
- SEE ROADWAY DETAIL SHEET NO. 15 FOR PAVEMENT CROSS SLOPES.
  - TRANSITION GUTTER WIDTH TO MATCH EXISTING B-6.12 CURB AND GUTTER OVER 5 FT - PAID FOR AS COMB. CONCRETE CURB & GUTTER, TYPE B-6.18
  - PE = PRIVATE ENTRANCE; CE = COMMERCIAL ENTRANCE
  - CABLES SHALL BE DISCONNECTED FROM THE LIGHTING UNIT TO BE REMOVED AND THE NEXT LIGHTING UNIT TO REMAIN. THE CABLE SHALL BE ABANDONED IN PLACE. THIS WORK SHALL BE INCLUDED IN THE COST OF "REMOVAL OF EXISTING LIGHTING UNIT, SALVAGE."



ILLINOIS DEPARTMENT OF TRANSPORTATION  
**ROADWAY IMPROVEMENT PLANS**  
 SPRINGFIELD DRIVE  
 STA. 24+65.46 TO STA. 49+00

REVISIONS	NAME	DATE

SCALE IN FEET: 20 HORIZONTAL, 5 VERTICAL

DRAWN BY: KRK  
 CHECKED BY: JRV  
 DATE: 04/04/06