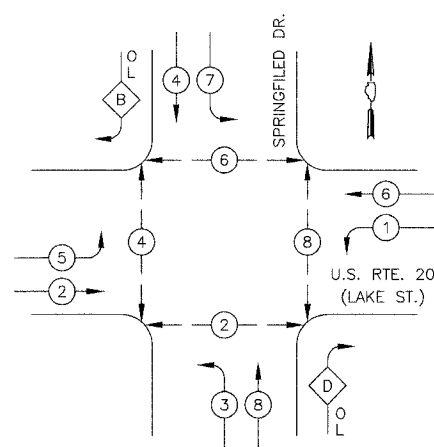


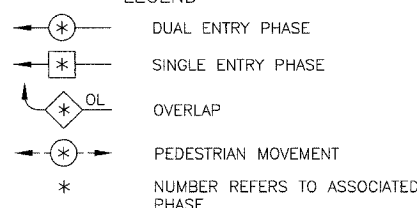
F.A.U. RTE.	SECTION	COUNTY	TOTAL SHEETS	SHEET NO.
3809	05-00050-00-CH	DUPAGE	36	28
SCHEDULE OF QUANTITIES AND PHASE DESIGNATION DIAGRAM				
FED. ROAD DISTRICT NO. 7	ILLINOIS	FED. AID PROJECT F-0021(068)		

CONTRACT NO. 83852

CONTROLLER SEQUENCE



LEGEND

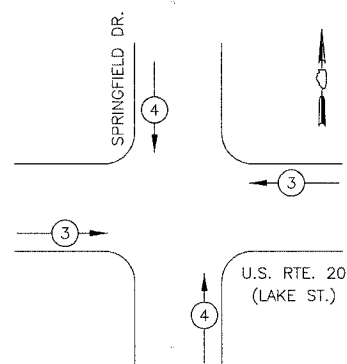


PHASE DESIGNATION DIAGRAM

RIGHT TURN OVERLAP PHASE DESIGNATION

OVERLAP LETTER	PERMISSIVE PHASE	PROTECTED PHASE
B	= 4	+ 5
D	= 8	+ 1

EMERGENCY VEHICLE PREEMPTION SEQUENCE



PROPOSED EMERGENCY VEHICLE PREEMPTORS		
EMERGENCY VEHICLE PREEMPTOR	3	4
MOVEMENT	← →	↑ ↓

TRAFFIC SIGNAL SCHEDULE OF QUANTITIES

DESCRIPTION	UNIT	QNTY.
SIGN PANEL- TYPE 1	SQ FT	18
SIGN PANEL- TYPE 2	SQ FT	25
CONDUIT IN TRENCH, 2" DIA., GALVANIZED STEEL	FOOT	319
CONDUIT IN TRENCH, 2 1/2" DIA., GALVANIZED STEEL	FOOT	84
CONDUIT IN TRENCH, 5" DIA., GALVANIZED STEEL	FOOT	16
CONDUIT PUSHED, 2" DIA., GALVANIZED STEEL	FOOT	358
CONDUIT PUSHED, 2 1/2" DIA., GALVANIZED STEEL	FOOT	113
CONDUIT PUSHED, 4" DIA., GALVANIZED STEEL	FOOT	474
HANDHOLE	EACH	4
HEAVY-DUTY HANDHOLE	EACH	4
DOUBLE HANDHOLE	EACH	2
TRENCH AND BACKFILL FOR ELECTRICAL WORK	FOOT	411
FULL-ACTUATED CONTROLLER AND TYPE IV CABINET, SPECIAL	EACH	1
TRANSCEIVER-FIBER OPTIC	EACH	1
ELECTRIC CABLE IN CONDUIT, SIGNAL NO. 14 2C	FOOT	660
ELECTRIC CABLE IN CONDUIT, SIGNAL NO. 14 3C	FOOT	1730
ELECTRIC CABLE IN CONDUIT, SIGNAL NO. 14 5C	FOOT	459
ELECTRIC CABLE IN CONDUIT, SIGNAL NO. 14 7C	FOOT	2398
ELECTRIC CABLE IN CONDUIT, LEAD-IN NO. 14 1PAIR	FOOT	2368
ELECTRIC CABLE IN CONDUIT, SERVICE, NO. 6 2 C	FOOT	61
TRAFFIC SIGNAL POST, GALVANIZED STEEL 16 FT.	EACH	4
STEEL MAST ARM ASSEMBLY AND POLE, 22 FT.	EACH	1
STEEL MAST ARM ASSEMBLY AND POLE, 26 FT.	EACH	1
STEEL MAST ARM ASSEMBLY AND POLE, 32 FT.	EACH	1
STEEL MAST ARM ASSEMBLY AND POLE, 34 FT.	EACH	1
CONCRETE FOUNDATION, TYPE A	FOOT	16
CONCRETE FOUNDATION, TYPE D	FOOT	4
CONCRETE FOUNDATION, TYPE E 30-INCH DIAMETER	FOOT	60
TRAFFIC SIGNAL BACKPLATE, LOUVERED, ALUMINUM	EACH	8
INDUCTIVE LOOP DETECTOR	EACH	11
DETECTOR LOOP, TYPE 1	FOOT	1079
LIGHT DETECTOR	EACH	2
LIGHT DETECTOR AMPLIFIER	EACH	1
PEDESTRIAN PUSH-BUTTON	EACH	4
TEMPORARY TRAFFIC SIGNAL INSTALLATION	EACH	1
REMOVE EXISTING TRAFFIC SIGNAL EQUIPMENT	EACH	1
REMOVE EXISTING HANDHOLE	EACH	9
REMOVE EXISTING CONCRETE FOUNDATION	EACH	9
SERVICE INSTALLATION - POLE MOUNTED	EACH	1
ELECTRIC CABLE IN CONDUIT, GROUNDING, NO. 6 1C	FOOT	767
ELECTRIC CABLE IN CONDUIT NO. 20 3/C, TWISTED, SHIELDED	FOOT	368
SIGNAL HEAD, L.E.D., 1-FACE, 3-SECTION, MAST ARM MOUNTED	EACH	2
SIGNAL HEAD, L.E.D., 1-FACE, 5-SECTION, MAST ARM MOUNTED	EACH	6
SIGNAL HEAD, L.E.D., 2-FACE, 5-SECTION, BRACKET MOUNTED	EACH	2
SIGNAL HEAD, L.E.D., 1-FACE, 5-SECTION, BRACKET MOUNTED	EACH	2
PEDESTRIAN SIGNAL HEAD, L.E.D., 2-FACE, BRACKET MOUNTED	EACH	4

THE TRAFFIC SIGNAL CONTROLLER EQUIPMENT FOR THIS PROJECT SHALL BE "EAGLE" BRAND TO MATCH THE EXISTING ADJACENT SYSTEM.

VILLAGE OF SCHAUMBURG SCHEDULE OF QUANTITIES AND PHASE DESIGNATION DIAGRAM U.S. RTE. 20 (LAKE ST.) & SPRINGFIELD DRIVE

REVISIONS	
NAME	DATE

NOT TO SCALE
DATE: 4/04/2006

DRAWN BY: OJT
DESIGNED BY: OJT
CHECKED BY: JUE