

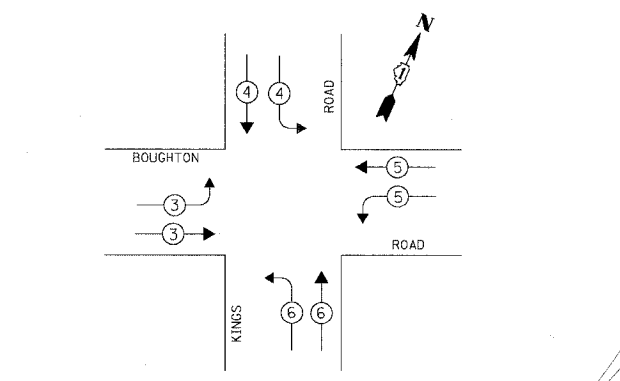
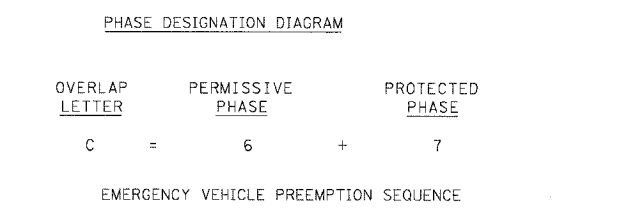
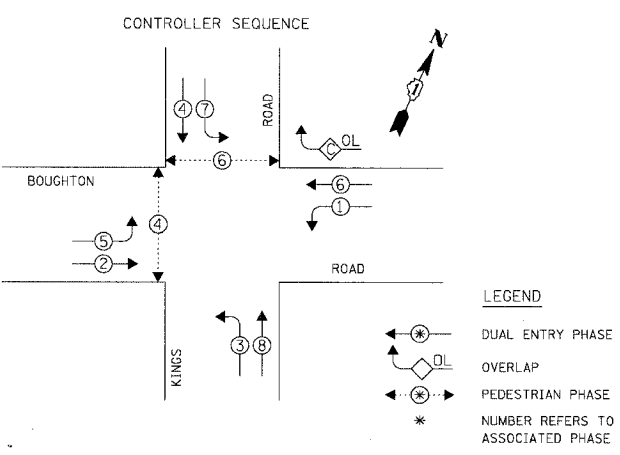
F.A.L. RTE.	SECTION	COUNTY	TOTAL SHEETS	SHEET NO.
3580	04-00043-00-TL	WILL	54	7
STA.	TO STA.			
FED. ROAD DIST. NO.	ILLINOIS	FED. AID PROJECT		
CONTRACT NO.: 83855				

SCHEDULE OF QUANTITIES		
ITEM	UNIT	TOTAL
FULL-ACTUATED CONTROLLER AND TYPE V CABINET, SPECIAL	EACH	1
MAINTENANCE OF EXISTING TRAFFIC SIGNAL INSTALLATION	EACH	1
TRANSCIVER - FIBER OPTIC	EACH	1
INDUCTIVE LOOP DETECTOR	EACH	10
REMOVE EXISTING TRAFFIC SIGNAL EQUIPMENT	EACH	1
UNINTERRUPTIBLE POWER SUPPLY STANDARD	EACH	1
RELOCATE EXISTING EMERGENCY VEHICLE PRIORITY GPS SYSTEM	EACH	1

THE FOLLOWING EXISTING TRAFFIC SIGNAL EQUIPMENT SHALL BE REMOVED BY THE CONTRACTOR, SHALL REMAIN THE PROPERTY OF THE OF THE VILLAGE OF BOLINGBROOK, AND SHALL BE DELIVERED BY THE CONTRACTOR TO THE VILLAGE YARD AS PER THE TRAFFIC SIGNAL SPECIFICATIONS.

- 1 EACH CONTROLLER AND CABINET (COMPLETE)
- 1 EACH MODEM

CABLE PLAN LEGEND		
EXISTING	PROPOSED	
		8" (200mm) TRAFFIC SIGNAL SECTION
		12" (300mm) TRAFFIC SIGNAL SECTION
		12" (300mm) PEDESTRIAN SIGNAL SECTION
		12" (300mm) PEDESTRIAN SIGNAL SECTION
		CONTROLLER CABINET
		SERVICE INSTALLATION
		TELEPHONE INSTALLATION
		VEHICLE DETECTOR, INDUCTIVE LOOP
		MAGNETIC DETECTOR
		EMERGENCY VEHICLE LIGHT DETECTOR
		CONFIRMATION BEACON
		PUSHBUTTON DETECTOR
		2 DENOTES NUMBER OF CONDUCTORS.
		ALL CABLE NO. 14 EXCEPT AS INDICATED.
		ALL LOOP DETECTOR CABLE TO BE SHIELDED.
		GROUND CABLE IN CONDUIT
		NO. 6 SOLID COPPER (GREEN)
		FIBER OPTIC CABLE IN CONDUIT
		NO. 62.5/125 2-MM12F SM12F
		SIGNAL FACE WITH BACKPLATE.
		"P" INDICATES PROGRAMMED HEAD.
		RAILROAD CONTROL CABINET
		ILLUMINATED SIGN
		"NO LEFT TURN"
		ILLUMINATED SIGN
		"NO RIGHT TURN"
		GROUND ROD AT HANDHOLE (H),
		DOUBLE HANDHOLE (H), OR CONTROLLER (C)
		GROUND ROD AT POST (P)
		OR MAST ARM POLE (MA)
		GROUND ROD AT ELECTRIC
		SERVICE INSTALLATION
		ILLUMINATED STREET NAME SIGN
		EMERGENCY VEHICLE SYSTEM ANTENNA
		LUMINAIRE
		COAXIAL CABLE
		UNINTERRUPTIBLE POWER SUPPLY



PROPOSED EMERGENCY VEHICLE PREEMPTORS				
EMERGENCY VEHICLE PREEMPTOR	3	4	5	6
MOVEMENT				

I.D.O.T. TRAFFIC SIGNAL INSTALLATION ELECTRICAL SERVICE REQUIREMENTS					TOTAL WATTAGE
TYPE	NO. OF LAMPS	WATTAGE X INCAND.	LED	X % OPERATION	
SIGNAL (RED)	16		17	0.50	136.00
(YELLOW)	16		25	0.25	100.00
(GREEN)	16		15	0.25	60.00
ARROW	20		12	0.10	24.00
PED. SIGNAL	4		25	1.00	100.00
CONTROLLER	1		100	1.00	100.00
ILLUM. SIGN	-		25	0.05	-
ILLUM. ST. NAME SIGN	3		60	0.50	90.00
LUMINAIRE	2	250		0.50	250.00
FLASHER				0.50	
ENERGY COSTS TO:					TOTAL = 860.00

VILLAGE OF BOLINGBROOK

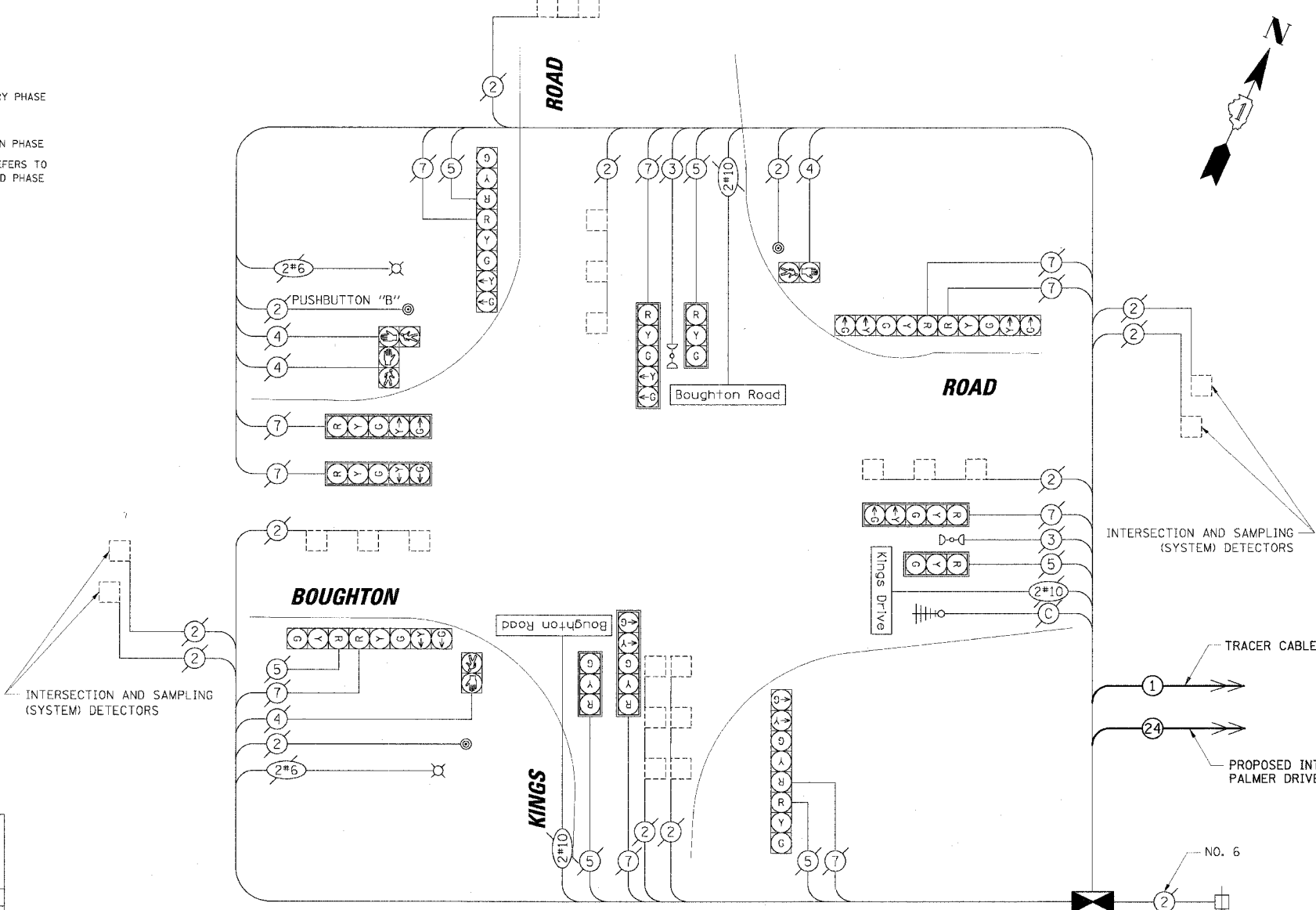
375 BRIARCLIFF ROAD

BOLINGBROOK, ILLINOIS 60440-0951

ENERGY SUPPLY: CONTACT: DALE BOLLINGER

PHONE: (815) 724-5717

COMPANY: COMED



NOTE: PUSHBUTTON "B" SHALL PLACE A CALL IN PHASES 6 AND 8.

FOUNDATION (DEPTH)	FT.	(m)	CABLE SLACK	FT.	(m)	VERTICAL	FT.	(m)
TYPE A - POST	4	(1.2)	HANDHOLE	6.5	(2.0)	ALL FOUNDATIONS	3.5	(1.0)
D - CONTROLLER	4	(1.2)	DOUBLE HANDHOLE	13	(4.0)	MAST ARM (L) POLE	20'-H-2=	
E - M. ARM POLE			SIGNAL POST	2	(1.0)		(6m+L-0.6m)=	
	24"	(600mm)	CONTROLLER CAB.	1	(0.5)	BRACKET MOUNTED	13	(4.0)
	30"	(750mm)	FIBER OPTIC	13	(4.0)	PED. PUSHBUTTON	4	(1.2)
	36"	(900mm)	ELECTRIC SERVICE	1	(0.5)	ELECTRIC SERVICE	13.5	(4.1)
			GROUND CABLE	1	(0.5)	SERVICE TO GROUND	13.5	(4.1)
						POST MOUNTED	6	(1.8)

NOTE: THE TRAFFIC SIGNAL CONTROLLER EQUIPMENT FOR THIS PROJECT SHALL BE "ECONOLITE" TO MATCH THE EXISTING ADJACENT SYSTEM.

- CONSTRUCTION NOTES:
- ① REMOVE EXISTING CABINET AND CONTROLLER. INSTALL NEW CONTROLLER AND TYPE V CABINET ON EXISTING FOUNDATION, TECH POWER M-E SERIES UPS, AND FIBER OPTIC TRANSCIVER.
 - ② REMOVE PHONE LINE AND MODEM.

REVISIONS	
NAME	DATE

ILLINOIS DEPARTMENT OF TRANSPORTATION

SCHEDULE OF QUANTITIES, CABLE PLAN AND PHASE DESIGNATION DIAGRAM

BOUGHTON ROAD AND KINGS DRIVE

BOLINGBROOK, ILLINOIS

SCALE: N.T.S.

DATE: 4/7/2006

DRAWN BY: FCP/FPB

DESIGNED BY: MKW

CHECKED BY: MJT

DATE: _____ BY: _____

PROJECT: 375 BRIARCLIFF ROAD, BOLINGBROOK, ILLINOIS 60440-0951

PROFILE: SURVEY: _____ CHECKED: _____

NOTE BOOK: _____

STRUCTURE: _____

DATE: _____ BY: _____

PROJECT: 375 BRIARCLIFF ROAD, BOLINGBROOK, ILLINOIS 60440-0951

PROFILE: SURVEY: _____ CHECKED: _____

NOTE BOOK: _____

STRUCTURE: _____

DATE: _____ BY: _____

PROJECT: 375 BRIARCLIFF ROAD, BOLINGBROOK, ILLINOIS 60440-0951

PROFILE: SURVEY: _____ CHECKED: _____

NOTE BOOK: _____

STRUCTURE: _____