

F.A.U. RTE.	SECTION	COUNTY	TOTAL SHEETS	SHEET NO.
3580	04-00043-00-TL	WILL	54	14
STA.		TO STA.		
FED. ROAD DIST. NO.		ILLINOIS FED. AID PROJECT		
CONTRACT NO.: 83855				

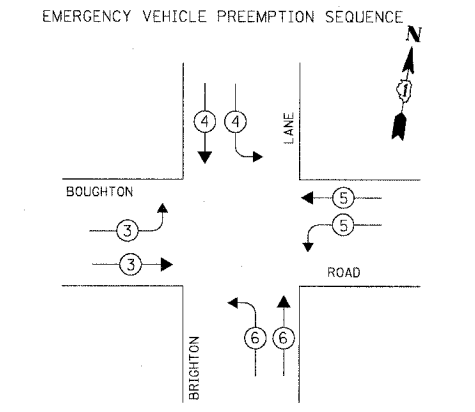
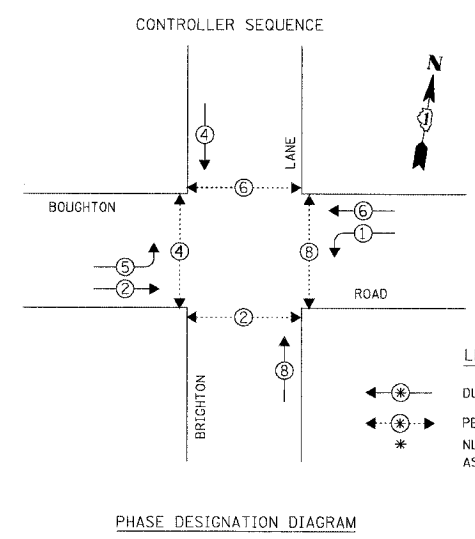
THE FOLLOWING EXISTING TRAFFIC SIGNAL EQUIPMENT SHALL BE REMOVED BY THE CONTRACTOR, SHALL REMAIN THE PROPERTY OF THE VILLAGE OF BOLINGBROOK, AND SHALL BE DELIVERED BY THE CONTRACTOR TO THE VILLAGE YARD AS PER THE TRAFFIC SIGNAL SPECIFICATIONS.

1 EACH CONTROLLER AND CABINET (COMPLETE)

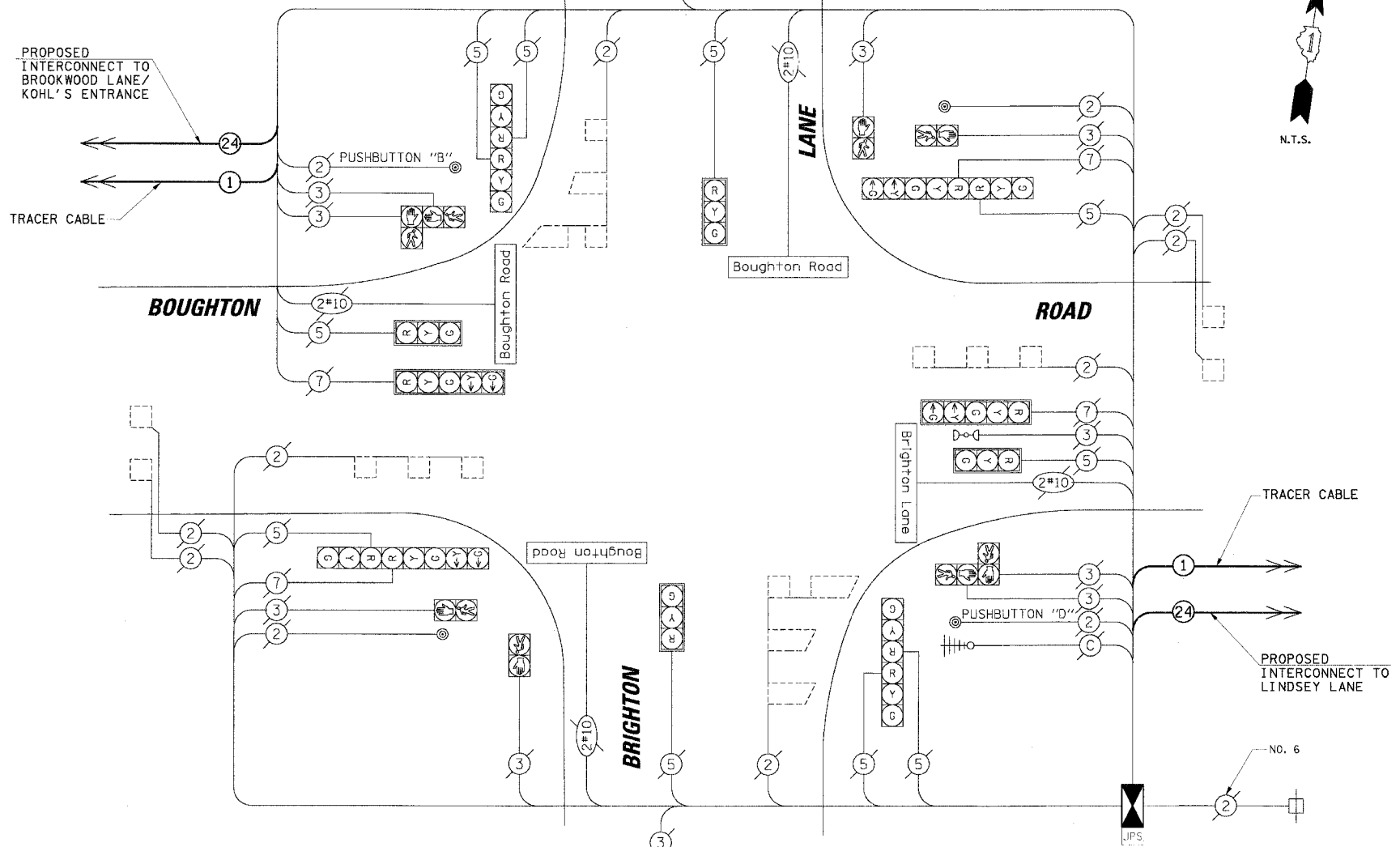
ITEM	UNIT	TOTAL
FULL-ACTUATED CONTROLLER AND TYPE V CABINET, SPECIAL	EACH	1
MAINTENANCE OF EXISTING TRAFFIC SIGNAL INSTALLATION	EACH	1
TRANSCEIVER - FIBER OPTIC	EACH	1
INDUCTIVE LOOP DETECTOR	EACH	8
REMOVE EXISTING TRAFFIC SIGNAL EQUIPMENT	EACH	1
RELOCATE EXISTING EMERGENCY VEHICLE PRIORITY GPS SYSTEM	EACH	1
RELOCATE EXISTING UPS BATTERY BACK-UP SYSTEM	EACH	1

CABLE PLAN LEGEND

	8" (200mm) TRAFFIC SIGNAL SECTION
	12" (300mm) TRAFFIC SIGNAL SECTION
	12" (300mm) PEDESTRIAN SIGNAL SECTION
	12" (300mm) PEDESTRIAN SIGNAL SECTION
	CONTROLLER CABINET
	SERVICE INSTALLATION
	TELEPHONE INSTALLATION
	VEHICLE DETECTOR, INDUCTION LOOP
	MAGNETIC DETECTOR
	EMERGENCY VEHICLE LIGHT DETECTOR
	CONFIRMATION BEACON
	PUSHBUTTON DETECTOR
	DENOTES NUMBER OF CONDUCTORS. ALL CABLE NO. 14 EXCEPT AS INDICATED. ALL LOOP DETECTOR CABLE TO BE SHIELDED.
	GROUND CABLE IN CONDUIT NO. 6 SOLID COPPER (GREEN)
	FIBER OPTIC CABLE IN CONDUIT NO. 62.5/125 2-MM12F SM12F
	SIGNAL FACE WITH BACKPLATE. "P" INDICATES PROGRAMMED HEAD.
	RAILROAD CONTROL CABINET
	ILLUMINATED SIGN "NO LEFT TURN"
	ILLUMINATED SIGN "NO RIGHT TURN"
	GROUND ROD AT HANDHOLE (H), DOUBLE HANDHOLE (HH), OR CONTROLLER (C)
	GROUND ROD AT POST (P) OR MAST ARM POLE (MA)
	GROUND ROD AT ELECTRIC SERVICE INSTALLATION
	ILLUMINATED STREET NAME SIGN
	EMERGENCY VEHICLE SYSTEM ANTENNA
	LUMINAIRE
	COAXIAL CABLE
	UNINTERRUPTIBLE POWER SUPPLY



PROPOSED EMERGENCY VEHICLE PREEMPTORS				
EMERGENCY VEHICLE PREEMPTOR	3	4	5	6
MOVEMENT				



I.D.O.T. TRAFFIC SIGNAL INSTALLATION ELECTRICAL SERVICE REQUIREMENTS					TOTAL WATTAGE
TYPE	NO. OF LAMPS	WATTAGE X INCAND.	LED	% OPERATION	
SIGNAL (RED)	14	17	0.50		119.00
(YELLOW)	14	25	0.25		87.50
(GREEN)	14	15	0.25		52.50
ARROW	8	12	0.10		9.60
PED. SIGNAL	8	25	1.00		200.00
CONTROLLER	1	100	1.00		100.00
ILLUM. SIGN	-	25	0.05		-
ILLUM. ST. NAME SIGN	4	60	0.50		120.00
FLASHER	-	-	0.50		-
TOTAL =					688.00

NOTES:
 PUSHBUTTON "B" SHALL PLACE A CALL IN PHASES 4 AND 6.
 PUSHBUTTON "D" SHALL PLACE A CALL IN PHASES 2 AND 8.

CONSTRUCTION NOTES:
 1 REMOVE EXISTING CABINET AND CONTROLLER. INSTALL NEW CONTROLLER AND TYPE V CABINET ON EXISTING FOUNDATION, AND FIBER OPTIC TRANSCEIVER.
 2 RELOCATE EXISTING EVP AND UPS UNITS.

ENERGY COSTS TO: TOTAL = 688.00
 VILLAGE OF BOLINGBROOK
 375 BRIARCLIFF ROAD
 BOLINGBROOK, ILLINOIS 60440-0951
 ENERGY SUPPLY: CONTACT: DALE BOLLINGER
 PHONE: (815) 724-5717
 COMPANY: COMED

FOUNDATION (DEPTH)	FT. (m)	CABLE SLACK	FT. (m)	VERTICAL	FT. (m)
TYPE A - POST	4 (1.2)	HANDHOLE	6.5 (2.0)	ALL FOUNDATIONS	3.5 (1.0)
D - CONTROLLER	4 (1.2)	DOUBLE HANDHOLE	13 (4.0)	MAST ARM (L) POLE	20'+L-2'
E - M. ARM POLE	-	SIGNAL POST	2 (1.0)	(6m+L-0.6m)	-
24" (600mm)	10 (3.0)	CONTROLLER CAB.	1 (0.5)	BRACKET MOUNTED	13 (4.0)
30" (750mm)	15 (4.6)	FIBER OPTIC	13 (4.0)	PED. PUSHBUTTON	4 (1.2)
36" (900mm)	15 (4.6)	ELECTRIC SERVICE	1 (0.5)	ELECTRIC SERVICE	13.5 (4.1)
		GROUND CABLE	1 (0.5)	SERVICE TO GROUND	13.5 (4.1)
				POST MOUNTED	6 (1.8)

NOTE:
 THE TRAFFIC SIGNAL CONTROLLER EQUIPMENT FOR THIS PROJECT SHALL BE "ECONOLITE" TO MATCH THE EXISTING ADJACENT SYSTEM.

REVISIONS	
NAME	DATE

ILLINOIS DEPARTMENT OF TRANSPORTATION
SCHEDULE OF QUANTITIES, CABLE PLAN AND PHASE DESIGNATION DIAGRAM
 BOUGHTON ROAD AND BRIGHTON LANE
 BOLINGBROOK, ILLINOIS
 SCALE: N.T.S.
 DATE: 4/7/2006
 DRAWN BY: FCP/FPB
 DESIGNED BY: MKW
 CHECKED BY: MJT

CHRISTOPHER B. BURKE ENGINEERING LTD.
 3575 West Higgins Road, Suite 600
 Rosemont, Illinois 60018
 (847) 823-0600
 DATE: _____ BY: _____
 PLAN NO.: _____
 NOTE BOOK NO.: _____
 FILE NAME: _____