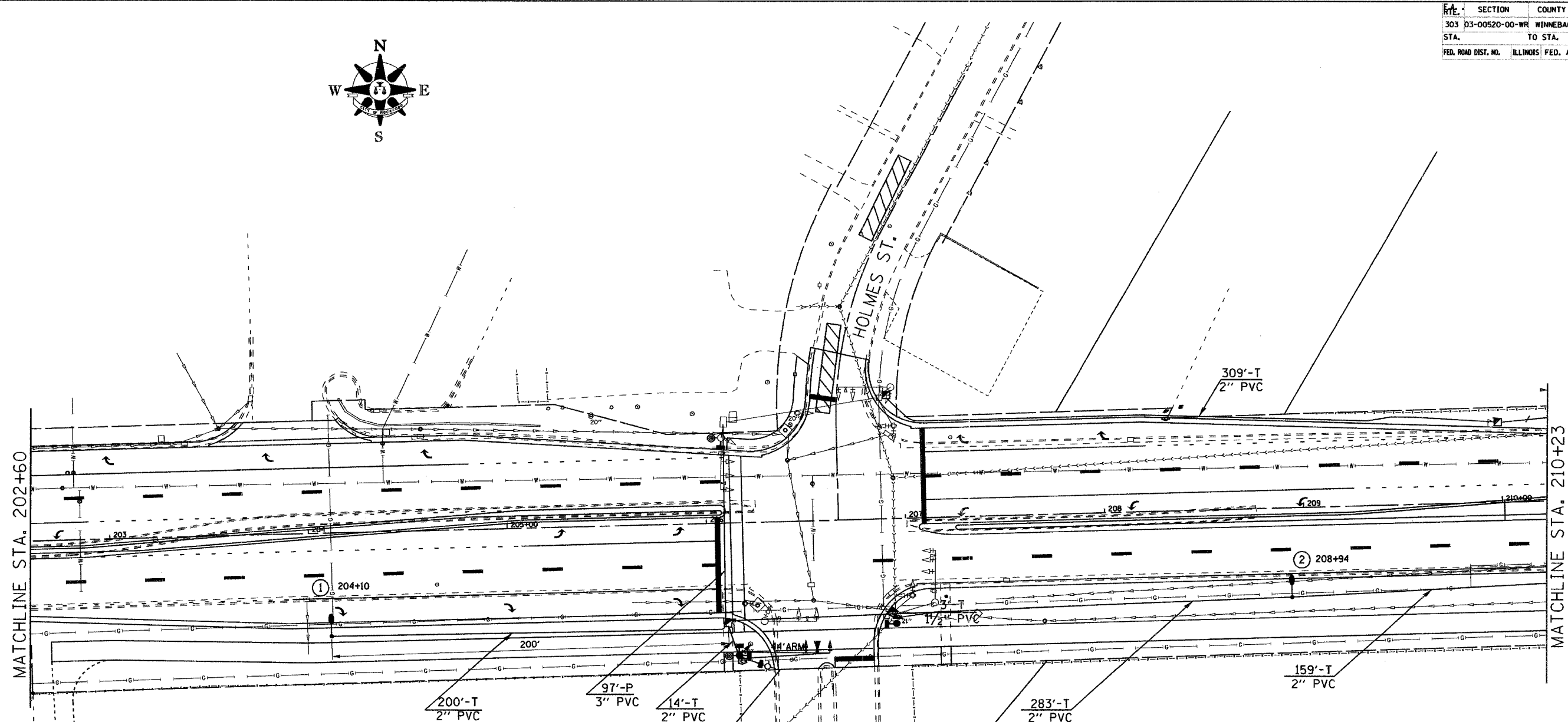
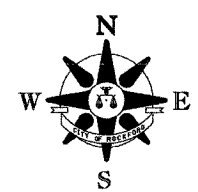


E.A. RTE.	SECTION	COUNTY	TOTAL SHEETS	SHEET NO.
303	D3-00520-00-WR	WINNEBAGO	254	176
STA.	TO STA.			
FED. ROAD DIST. NO.	ILLINOIS	FED. AID PROJECT		



MATCHLINE STA. 202+60

MATCHLINE STA. 210+23

NOTE: RELOCATE EXISTING MAST ARM MOUNTED STREET NAME SIGN TO NEW MAST ARM ASSEMBLY. COST INCLUDED IN STEEL COMBINATION MAST ARM ASSEMBLY AND POLE.

REMOVE EXISTING TRAFFIC SIGNAL EQUIPMENT

- NW CORNER
SIGNAL POST, SIGNAL BASE, 1-FACE PED HEAD, PED PUSH BUTTON
- NE CORNER
HANDHOLE, SIGNAL BASE, SIGNAL POST, 2-FACE PED HEAD, 2 PUSH BUTTONS
- SE CORNER
HANDHOLE, SIGNAL BASE, SIGNAL POST, 2-FACE PED HEAD, 2 PUSH BUTTONS
- SW CORNER
HANDHOLE, SIGNAL BASE, SIGNAL POST, 1-FACE PED HEAD, 1 PUSH BUTTON, MAST ARM ASSEMBLY AND BASE, 3 SIGNAL HEADS, 1 VIDEO DETECTION CAMERA, 1 EMERGENCY VEHICLE DETECTOR

LEGEND

- STEEL COMBINATION MAST ARM ASSEMBLY AND POLE
- PEDESTRIAN PUSH BUTTON
- PEDESTRIAN SIGNAL HEAD
- VIDEO DETECTION CAMERA
- TRAFFIC SIGNAL HEAD
- EMERGENCY VEHICLE LIGHT DETECTOR
- VIDEO SURVEILLANCE CAMERA

Note: Lighting items are shown for information only. These items will be bid as part of a separate project.

Added 6-9-06