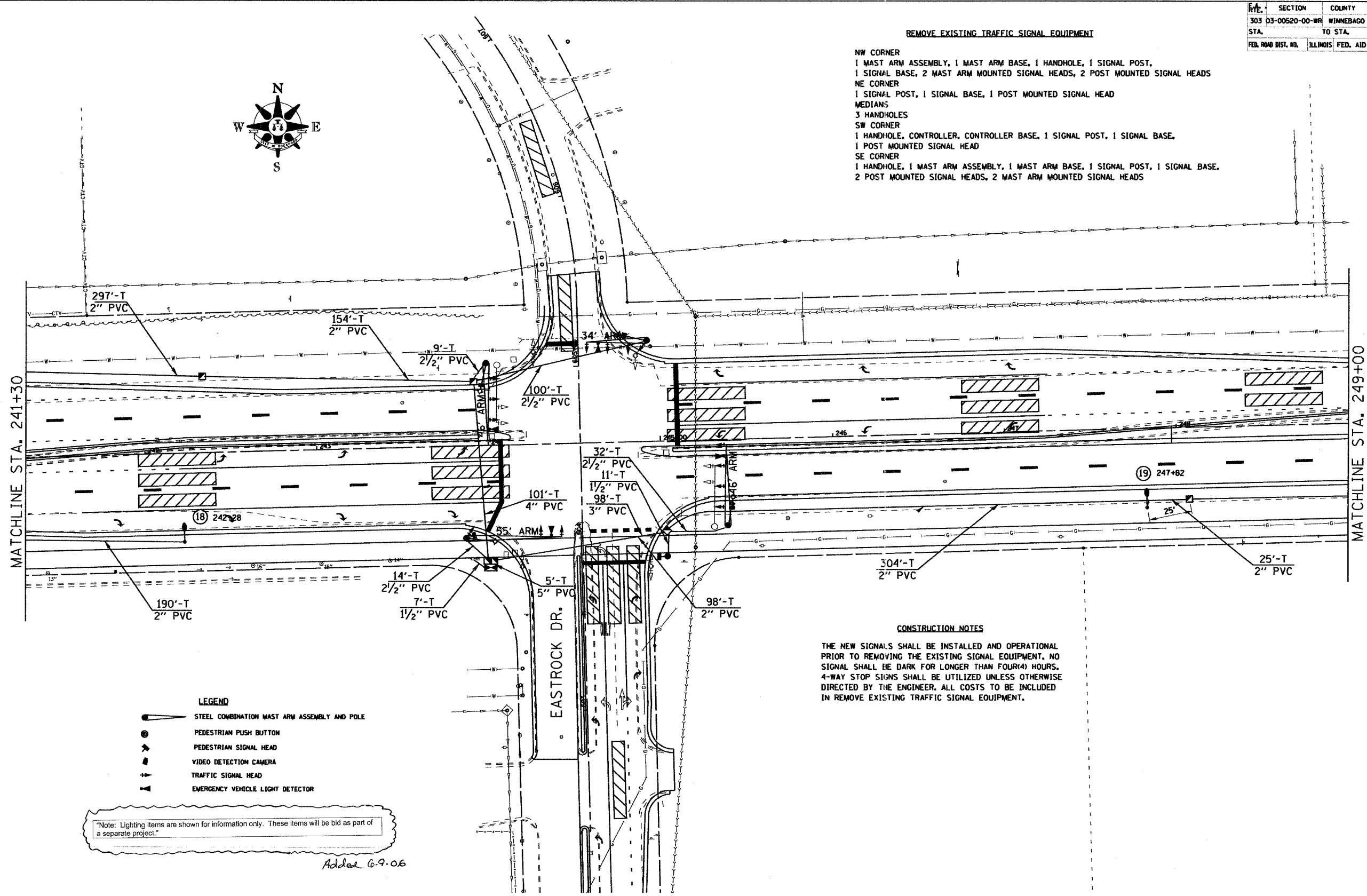


ROUTE	SECTION	COUNTY	TOTAL SHEETS	SHEETS NO.
303	03-00620-00-WR	WINNEBAGO	254	182
STA.	TO STA.			
FED. ROAD DIST. NO.	ILLINOIS FED. AID PROJECT			

REMOVE EXISTING TRAFFIC SIGNAL EQUIPMENT

- NW CORNER
- 1 MAST ARM ASSEMBLY, 1 MAST ARM BASE, 1 HANDHOLE, 1 SIGNAL POST,
- 1 SIGNAL BASE, 2 MAST ARM MOUNTED SIGNAL HEADS, 2 POST MOUNTED SIGNAL HEADS
- NE CORNER
- 1 SIGNAL POST, 1 SIGNAL BASE, 1 POST MOUNTED SIGNAL HEAD
- MEDIANS
- 3 HANDHOLES
- SW CORNER
- 1 HANDHOLE, CONTROLLER, CONTROLLER BASE, 1 SIGNAL POST, 1 SIGNAL BASE,
- 1 POST MOUNTED SIGNAL HEAD
- SE CORNER
- 1 HANDHOLE, 1 MAST ARM ASSEMBLY, 1 MAST ARM BASE, 1 SIGNAL POST, 1 SIGNAL BASE,
- 2 POST MOUNTED SIGNAL HEADS, 2 MAST ARM MOUNTED SIGNAL HEADS



- LEGEND**
- STEEL COMBINATION MAST ARM ASSEMBLY AND POLE
  - PEDESTRIAN PUSH BUTTON
  - PEDESTRIAN SIGNAL HEAD
  - VIDEO DETECTION CAMERA
  - TRAFFIC SIGNAL HEAD
  - EMERGENCY VEHICLE LIGHT DETECTOR

"Note: Lighting items are shown for information only. These items will be bid as part of a separate project."

Added 6-9-06

CONSTRUCTION NOTES

THE NEW SIGNALS SHALL BE INSTALLED AND OPERATIONAL PRIOR TO REMOVING THE EXISTING SIGNAL EQUIPMENT. NO SIGNAL SHALL BE DARK FOR LONGER THAN FOUR(4) HOURS. 4-WAY STOP SIGNS SHALL BE UTILIZED UNLESS OTHERWISE DIRECTED BY THE ENGINEER. ALL COSTS TO BE INCLUDED IN REMOVE EXISTING TRAFFIC SIGNAL EQUIPMENT.