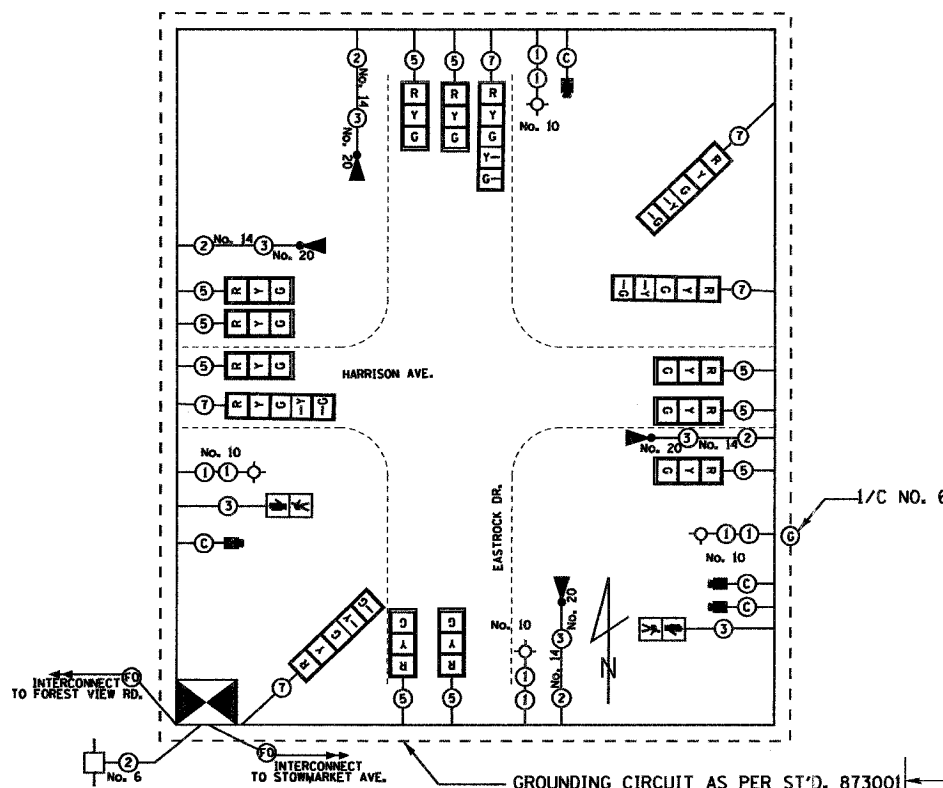


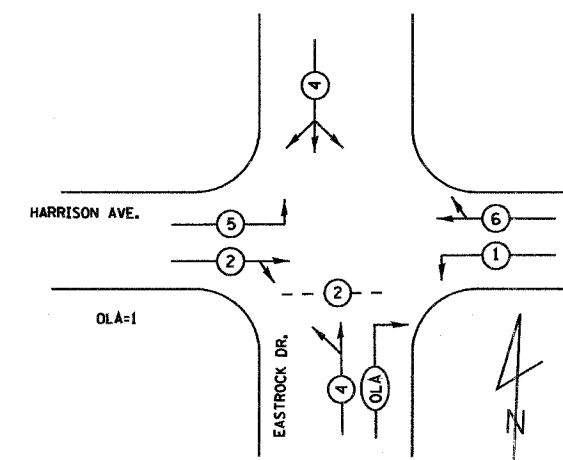
ROUTE	SECTION	COUNTY	TOTAL SHEETS	SHEET NO.
303	03-00520-00-WR	WINNEBAGO	254	183
STA.	TO STA.			
	ILLINOIS FED. AID PROJECT			



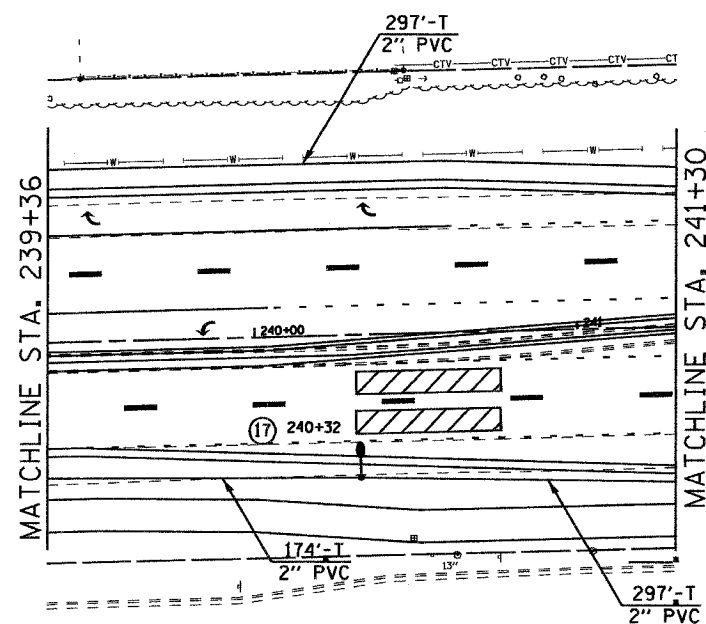
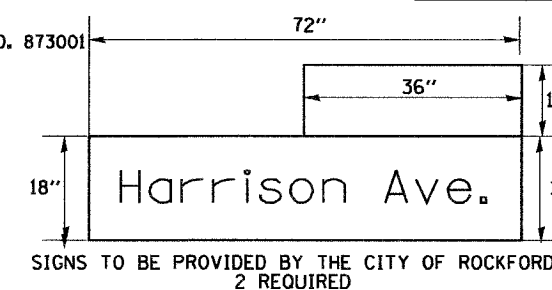
WIRING DIAGRAM



PHASE DESIGNATION DIAGRAM



PROPOSED EMERGENCY VEHICLE PREEMPTORS			
EMERGENCY VEHICLE PREEMPTOR	1	2	3
MOVEMENT	—	—	



LEGEND

- ③ NO. OF CONDUCTORS IN SIGNAL CABLE
- R
Y
G TRAFFIC SIGNAL HEAD W/BACKPLATE
- ▶ EMERGENCY PREEMPT LIGHT DETECTOR AND CONFIRMATION BEACON
- ⊙ PEDESTRIAN PUSH BUTTON
- Ⓜ PEDESTRIAN SIGNAL HEAD
- ⊙ No. 10 LUMINAIRE, SODIUM VAPOR 250 W, HPS

LEGEND

- ▶ STEEL COMBINATION MAST ARM ASSEMBLY AND POLE
- ⊙ PEDESTRIAN PUSH BUTTON
- ▶ PEDESTRIAN SIGNAL HEAD
- ▶ VIDEO DETECTION CAMERA
- ▶ TRAFFIC SIGNAL HEAD
- ▶ EMERGENCY VEHICLE LIGHT DETECTOR

Note: Lighting items are shown for information only. These items will be bid as part of a separate project.

Added 6-9-06

NOTE: RELOCATE EXISTING "EASTROCK DR." STREET NAME SIGNS TO NEW MAST ARM ASSEMBLIES. COST INCLUDED IN STEEL COMBINATION MAST ARM ASSEMBLY AND POLE.