

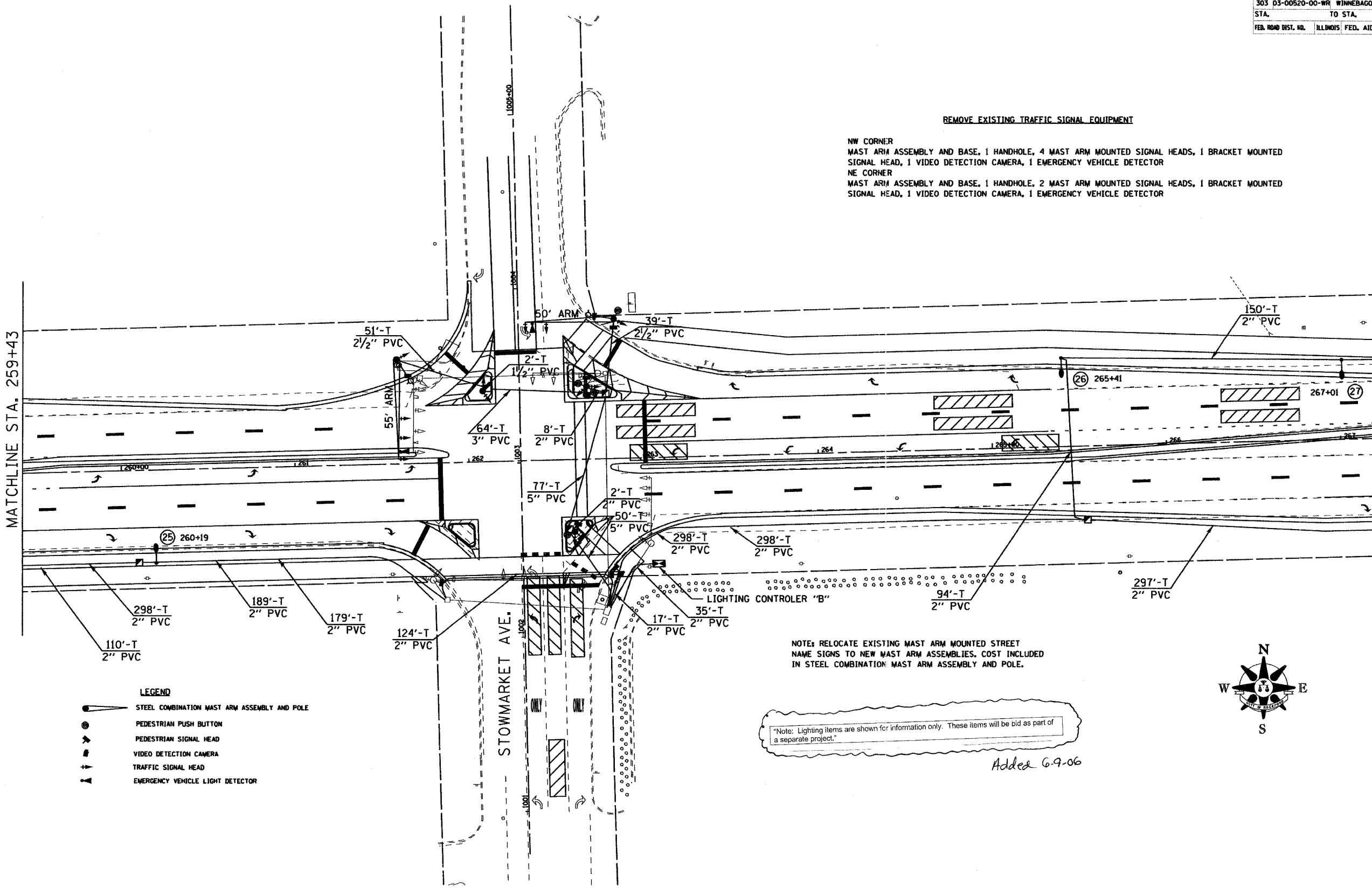
ROUTE	SECTION	COUNTY	TOTAL SHEETS	SHEET NO.
303	03-00520-00-WR	WINNEBAGO	254	185
STA.		TO STA.		
FED. ROAD DIST. NO.		ILLINOIS FED. AID PROJECT		

REMOVE EXISTING TRAFFIC SIGNAL EQUIPMENT

NW CORNER
 MAST ARM ASSEMBLY AND BASE, 1 HANDHOLE, 4 MAST ARM MOUNTED SIGNAL HEADS, 1 BRACKET MOUNTED SIGNAL HEAD, 1 VIDEO DETECTION CAMERA, 1 EMERGENCY VEHICLE DETECTOR
NE CORNER
 MAST ARM ASSEMBLY AND BASE, 1 HANDHOLE, 2 MAST ARM MOUNTED SIGNAL HEADS, 1 BRACKET MOUNTED SIGNAL HEAD, 1 VIDEO DETECTION CAMERA, 1 EMERGENCY VEHICLE DETECTOR

MATCHLINE STA. 259+43

MATCHLINE STA. 267+20



- LEGEND**
- STEEL COMBINATION MAST ARM ASSEMBLY AND POLE
 - PEDESTRIAN PUSH BUTTON
 - PEDESTRIAN SIGNAL HEAD
 - VIDEO DETECTION CAMERA
 - TRAFFIC SIGNAL HEAD
 - EMERGENCY VEHICLE LIGHT DETECTOR

NOTE: RELOCATE EXISTING MAST ARM MOUNTED STREET NAME SIGNS TO NEW MAST ARM ASSEMBLIES. COST INCLUDED IN STEEL COMBINATION MAST ARM ASSEMBLY AND POLE.

Note: Lighting items are shown for information only. These items will be bid as part of a separate project.

Addex 6-9-06

