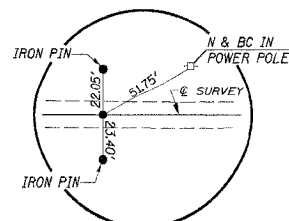


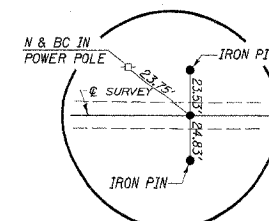
WILLIAM J. COPAS

ROUTE	SECTION	COUNTY	TOTAL SHEETS	SHEET NO.
T.R. 227	94-24122-00-BR	IROQUOIS	15	3
STA. 20+00.00	TO STA. 20+01.46			
ROAD DISTRICT	ILLINOIS	RIDGELAND		

CONTRACT NO. 87298



P.O.T. STA. 10+00.00  
IRON PIN (FLUSH)



P.O.T. STA. 20+01.46  
IRON PIN (FLUSH)

**ENTRANCES TO BE BUILT**

LT. STA. 14+48, F.E. -10.0%, 28' ROADBED  
RT. STA. 17+55, F.E. +1.0%, 28' ROADBED  
QUANTITIES INCLUDED IN THOSE LISTED

STA. 15+03 - SPECIAL BRIDGE DESIGN  
PRECAST PRESTRESSED CONCRETE DECK  
BEAM BRIDGE, SINGLE SPAN @ 67'-0"  
30' ROADWAY, 0° SKEW

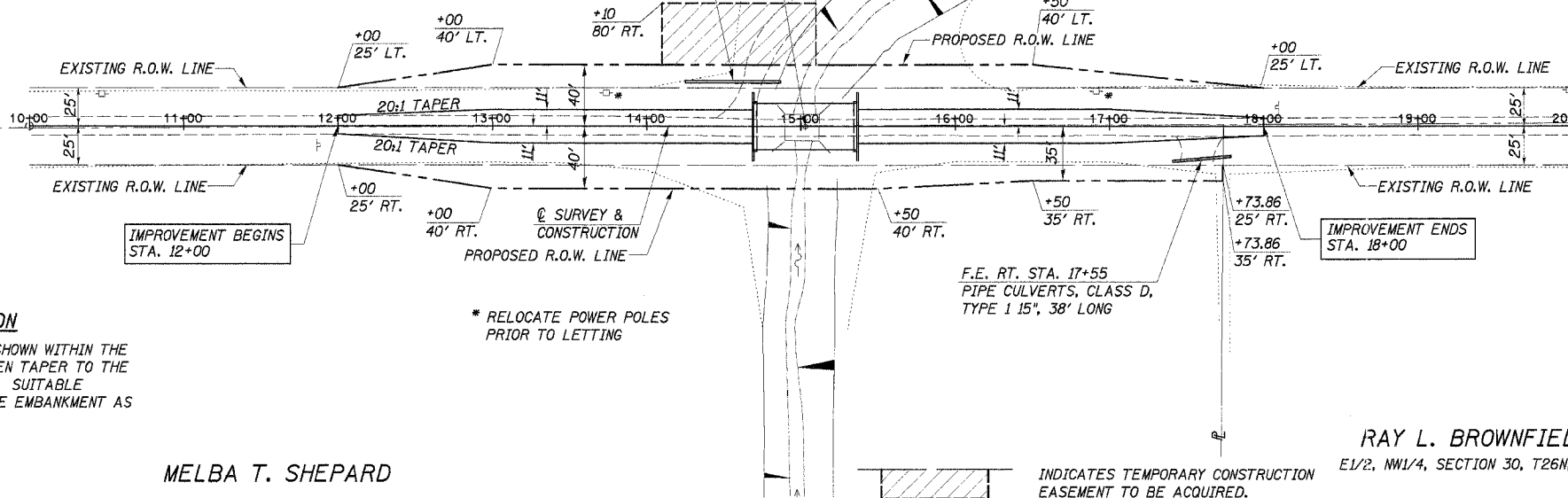
F.E. LT. STA. 14+48  
PIPE CULVERTS, CLASS D,  
TYPE 1 18", 62' LONG  
U.S.F.L. 196.6, STA. 14+22  
D.S.F.L. 196.0, STA. 14+84

**PIPES TO BE REMOVED**

LT. STA. 14+68, 15" CMP, 37' LONG  
RT. STA. 17+60, 12" CMP, 31' LONG  
QUANTITIES INCLUDED IN "EARTH EXCAVATION".

I PIN/CAP (SET)  
SW COR., SECTION 19  
T26N, R10E, 3RD P.M.  
2.86' RT., STA. 4+74.98

RR SPIKE (FOUND)  
SE COR., SECTION 19  
T26N, R10E, 3RD P.M.  
13.66' LT., STA. 57+33.84



**CHANNEL EXCAVATION**

THE CHANNEL SHALL BE EXCAVATED AS SHOWN WITHIN THE LIMITS OF THE PROPOSED STRUCTURE THEN TAPER TO THE EXISTING CHANNEL AT THE R.O.W. LINES. SUITABLE EXCAVATED MATERIAL TO BE USED IN THE EMBANKMENT AS DIRECTED BY THE ENGINEER.

CHANNEL EXCAVATION = 300 CU. YD.

MELBA T. SHEPARD

W1/2, NW1/4, SECTION 30, T26N, R10E, 3RD P.M.

\* RELOCATE POWER POLES PRIOR TO LETTING

INDICATES TEMPORARY CONSTRUCTION EASEMENT TO BE ACQUIRED.

RAY L. BROWNFIELD TRUST

E1/2, NW1/4, SECTION 30, T26N, R10E, 3RD P.M.

**EXISTING STRUCTURE 038-5328**

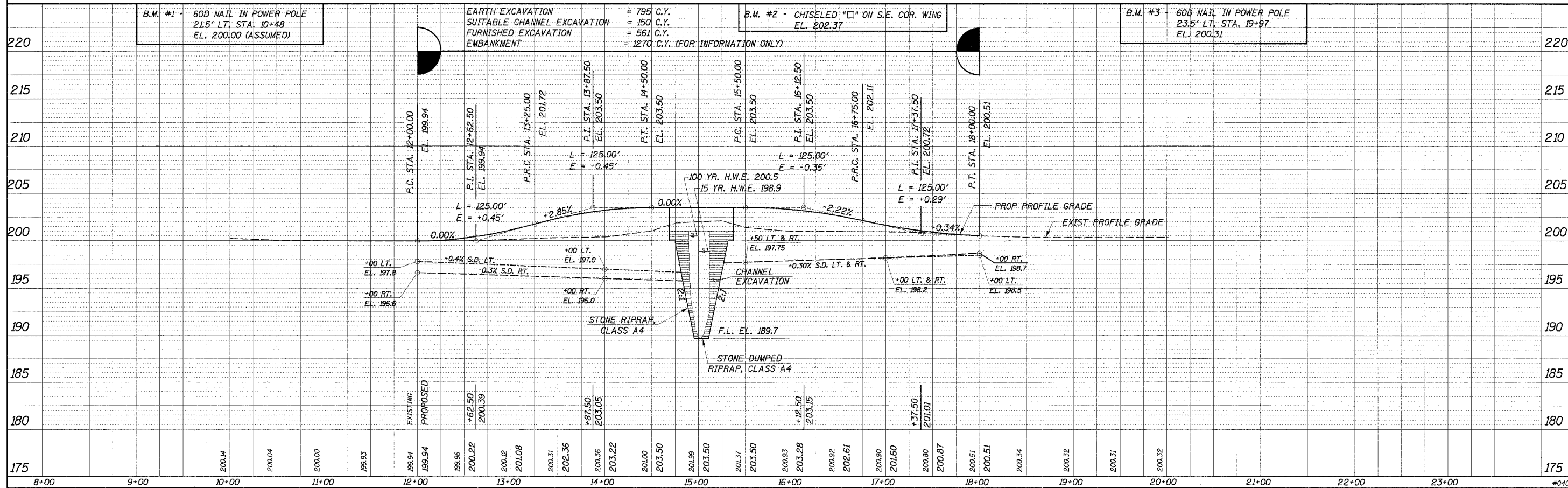
SINGLE SPAN TIMBER DECK ON STEEL I-BEAMS WITH CLOSED CONC. ABUTMENTS AND WINGWALLS.  
Bk.-to-Bk. = 24.5'  
O.-to-O. = 16.5'  
REMOVAL OF EXISTING STRUCTURES = 1 EACH

**OVERHEAD POWER**

EASTERN ILLINI ELECTRIC  
ALAN SCHWEIGHART  
217-379-2131 EXT. 173

**BURIED CABLE**

VERIZON NORTH, INC.  
JONNA FRICKE  
309-663-3422



DATE: 6/7/04  
BY: MD  
CHECKED: MD  
DATE: 6/9/97

DATE: 6/7/04  
BY: MD  
CHECKED: MD  
DATE: 6/9/97