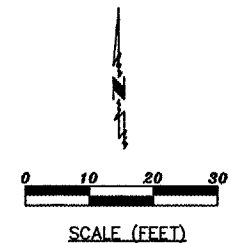
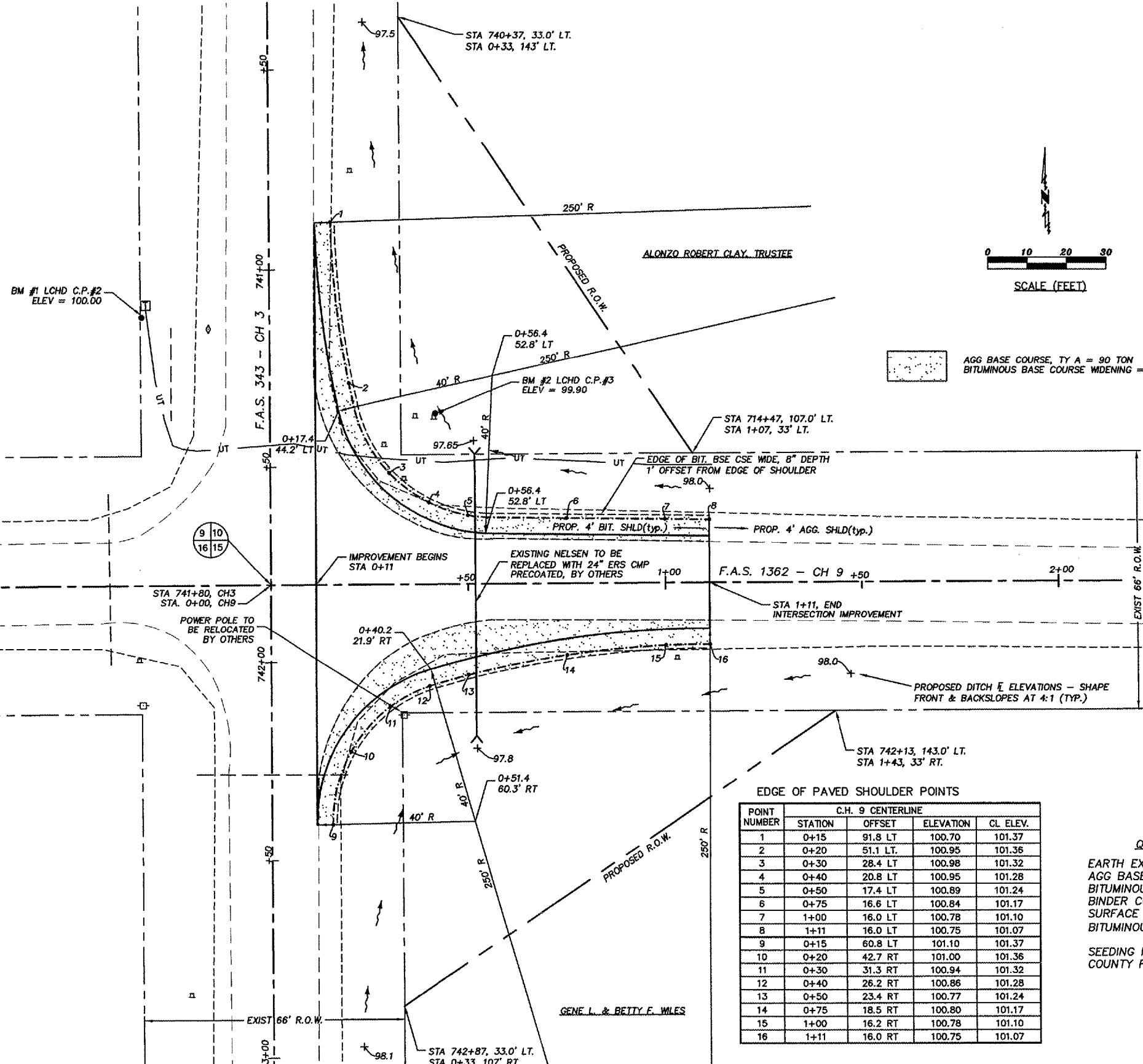


ROUTE NO.	SECTION	COUNTY	TOTAL SHEETS	SHEET NO.
343 & 1362	01-00025-04-RS	LIVINGSTON	12	8

PROJECT NO. SR-355(119)

\\lchd2000server\lch\cwork\ROAD Projects\00025RS4-ChatsRd-North\Planning\Intersect-CH3-CH9.dwg, 3/30/2006 12:39:48 PM



AGG BASE COURSE, TY A = 90 TON  
BITUMINOUS BASE COURSE WIDENING = 115 TON

EDGE OF PAVED SHOULDER POINTS

POINT NUMBER	C.H. 9 CENTERLINE			CL. ELEV.
	STATION	OFFSET	ELEVATION	
1	0+15	91.8 LT	100.70	101.37
2	0+20	51.1 LT.	100.95	101.36
3	0+30	28.4 LT	100.98	101.32
4	0+40	20.8 LT	100.95	101.28
5	0+50	17.4 LT	100.89	101.24
6	0+75	16.8 LT	100.84	101.17
7	1+00	16.0 LT	100.78	101.10
8	1+11	16.0 LT	100.75	101.07
9	0+15	60.8 LT	101.10	101.37
10	0+20	42.7 RT	101.00	101.36
11	0+30	31.3 RT	100.94	101.32
12	0+40	26.2 RT	100.86	101.28
13	0+50	23.4 RT	100.77	101.24
14	0+75	18.5 RT	100.80	101.17
15	1+00	16.2 RT	100.78	101.10
16	1+11	16.0 RT	100.75	101.07

**QUANTITIES(AVERAGE)**  
 EARTH EXCAVATION = 250 CU YD (includes proposed ditch & widening)  
 AGG BASE COURSE, TY A = 90 TON  
 BITUMINOUS BSE CSE WIDE = 115 TON  
 BINDER COURSE = 77 TON  
 SURFACE COURSE = 46 TON  
 BITUMINOUS MATERIALS (MC-30) = 90 GALLON  
 SEEDING IN RELOCATED DITCH AREA TO BE DONE BY COUNTY FORCES WITHIN 7 DAYS OF EARTHWORK OPERATION