

FAS NO.	SECTION	COUNTY	TOTAL SHEETS	SHEET NO.
332	03-00102-00-RS	FORD	3	1
PROJECT RS - 332(104)				
CONTRACT # 87326				

**INDEX OF SHEETS**

- SHEET 1. COVER SHEET
- SHEET 2. TYPICAL CROSS SECTION, STRUCTURAL DESIGN, BUTT JOINT DETAIL, BITUMINOUS MIXTURE TABLE
- SHEET 3. TYPICAL ENTRANCE DETAIL, MAILBOX DETAILS, SIDE ROAD RETURN, VAR. DEPTH MILL DETAIL, GENERAL NOTES

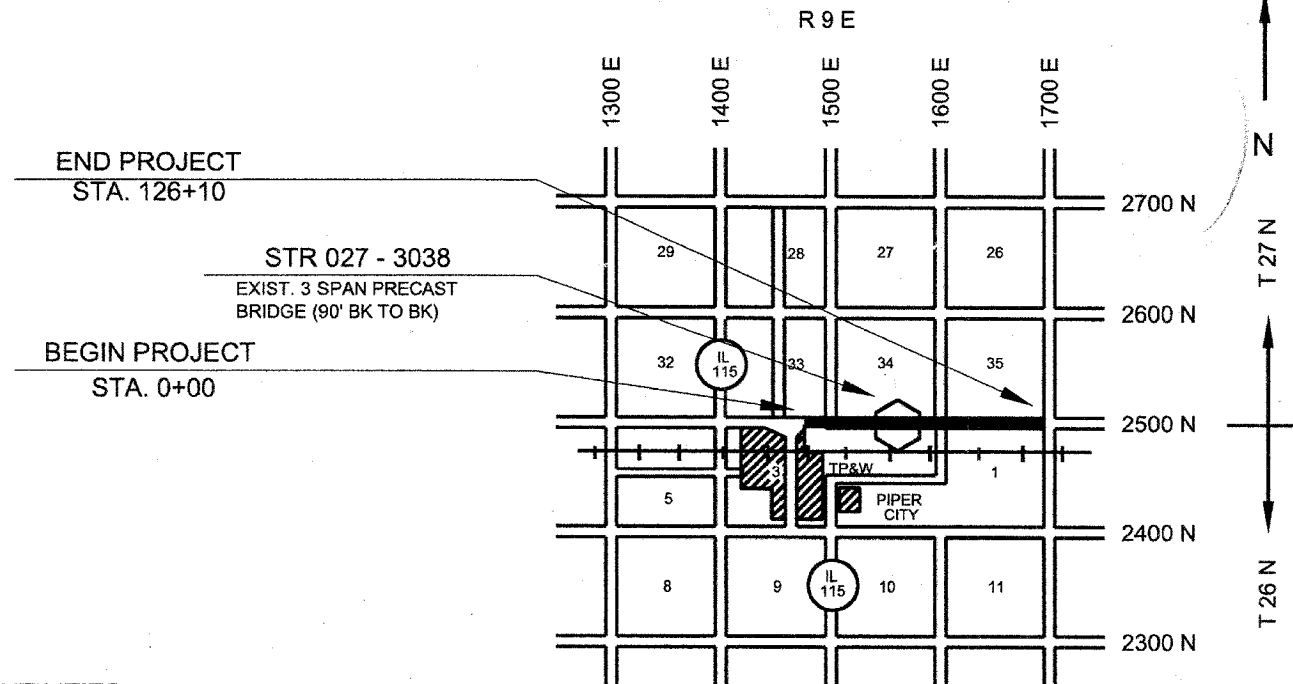
STATE OF ILLINOIS  
DEPARTMENT OF TRANSPORTATION  
**PLANS FOR**  
**PROPOSED LOCAL AGENCY IMPROVEMENT**  
**FEDERAL-AID SECONDARY PROJECT**  
C.H.16  
F.A.S. ROUTE 332 SECTION 03-00102-00-RS FORD COUNTY  
PROJECT RS-332(104)  
JOB NO. C-93-061-06

**STANDARDS**

- 701301-02 LANE CLOSURE 2 LANE, 2 WAY, SHORT TIME OPERATIONS
- 701306-01 LANE CLOSURE 2 LANE, 2 WAY, SLOW MOVING OPERATIONS - DAY ONLY FOR SPEEDS ≥ 45 MPH
- 701311-02 LANE CLOSURE 2 LANE, 2 WAY, MOVING OPERATIONS - DAY ONLY
- 702001-06 TRAFFIC CONTROL DEVICES
- 780001-01 TYPICAL PAVEMENT MARKINGS

SUMMARY OF QUANTITIES

CODE NO.	ITEM	UNIT	1000 QUANTITY
* 40600100	BITUMINOUS MATERIALS (PRIME COAT)	GALLON	2155
* 40600300	AGGREGATE (PRIME COAT)	TON	28
* 40600980	BITUMINOUS SURFACE REMOVAL - BUTT JOINT	SQ YD	135
* 40600990	TEMPORARY RAMP	SQ YD	22
* 40800040	INCIDENTAL BITUMINOUS SURFACING	TON	45
* 44000030	BITUMINOUS SURFACE REMOVAL ( VARIABLE DEPTH )	SQ YD	335
* 48101200	AGGREGATE SHOULDERS, TYPE B	TON	935
67100100	MOBILIZATION	L SUM	1
* 70100460	TRAFFIC CONTROL AND PROTECTION, STANDARD 701306	L SUM	1
* 70300100	SHORT- TERM PAVEMENT MARKING	FOOT	2520
* Δ 78001110	PAINT PAVEMENT MARKING - LINE 4"	FOOT	3155
* X4066414	BITUMINOUS CONCRETE SURFACE COURSE, SUPERPAVE, MIXTURE C, N50	TON	2390
* X4066765	LEVELING BINDER (MACHINE METHOD), SUPERPAVE, N50	TON	1575
*	INDICATES SEE SPECIAL PROVISIONS		
Δ	SPECIALTY ITEM		



**UTILITIES**

UTILITIES ON THIS SECTION AT VARIOUS LOCATIONS INCLUDES TO THE BEST OF OUR KNOWLEDGE:

VERIZON TELEPHONE COMPANY (UNDERGROUND)  
OVERHEAD POWER - AMEREN CIPS  
UNDERGROUND GAS - NICOR

CONTRACTORS OR SUBCONTRACTORS SHALL CONTACT J.U.L.I.E. (1-800-892-0123) AT LEAST 72 HOURS PRIOR TO ANY EXCAVATION OR DRIVING FOR UTILITIES LOCATION

GROSS LENGTH = 12,610' = 2.388 MI.  
NET LENGTH = 12,610' = 2.388 MI.

THE PLANS FOR THIS SECTION WERE APPROVED BY THE DEPARTMENT AS SECTION 33Q-1MFT 1974, SECTION 85-00053-00-RS & SECTION 03-00102-00-RS  
FUNCTIONAL CLASSIFICATION: MAJOR COLLECTOR

CONSTRUCTION TYPE CODE IOOO

CURRENT (2006) ADT = 350 - 88% PC  
9% SU  
3% MU

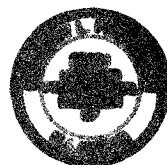
DESIGN ADT (2016) = 375

DESIGN SPEED = 50 MPH

THE ACCEPTANCE OF THIS PROJECT IS BASED ON THE MINIMUM DESIGN STANDARDS FOR THE LOCAL AGENCY PAVEMENT PRESERVATION (L.A.P.P.) POLICY

APPROVED	<b>3-9-2006</b> <i>Margaret Parkinson</i> LOCAL AGENCY OFFICIAL
PASSED	<i>March 22, 2006</i> <i>Harold R. Long</i> DISTRICT ENGINEER OF LOCAL ROADS & STREETS
APPROVED	<i>March 22, 2006</i> <i>Gregory M. ...</i> DEPUTY DIRECTOR OF HIGHWAYS, REGION 2 STATE OF ILLINOIS DEPARTMENT OF TRANSPORTATION

JOB NO. C-93-061-06  
CONTRACT NO. 87326



*Margaret Parkinson*  
ILLINOIS PROFESSIONAL NO. 062-035801

EXPIRES 11-30-2007