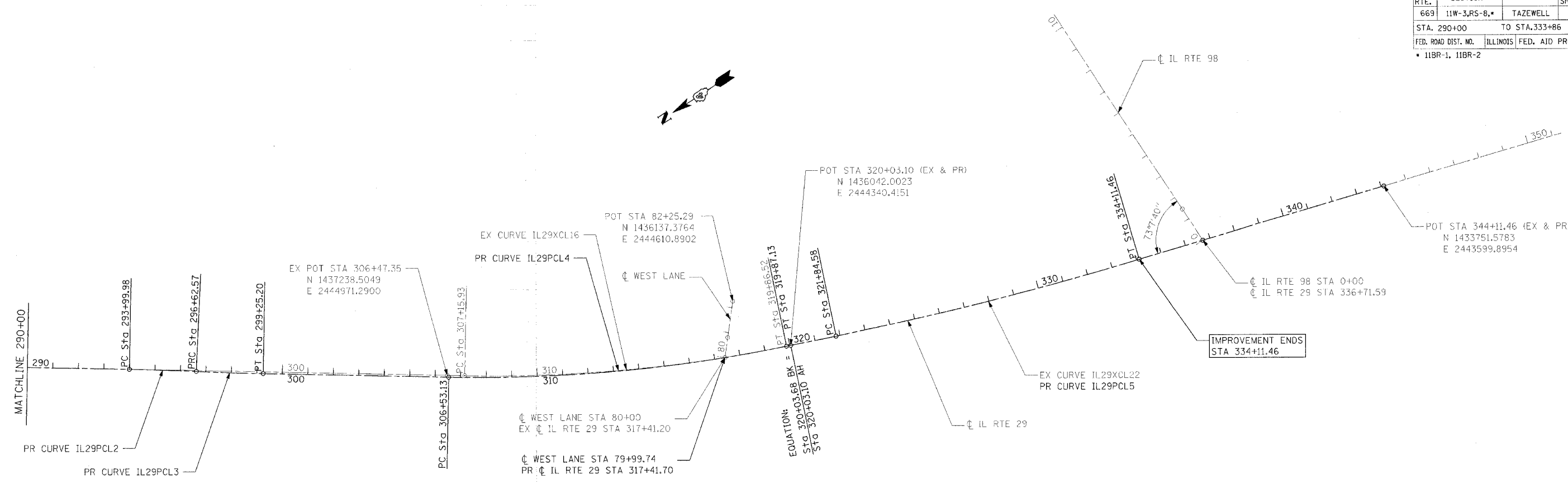


F.A.P. RTE.	SECTION	COUNTY	TOTAL SHEETS	SHEET NO.
669	11W-3,RS-8,*	TAZEWELL	442	62
STA. 290+00		TO STA.333+86		
FED. ROAD DIST. NO.		ILLINOIS FED. AID PROJECT		
* IIBR-1, IIBR-2				



EXISTING HORIZONTAL CURVE DATA

IL RTE 29	
EXIST. CURVE IL29XCL16	EXIST. CURVE IL29XCL22
PI STA. = 313+53.84	PI STA. = 327+98.40
$\Delta = 12^\circ 42' 21''$ (LT)	$\Delta = 4^\circ 54' 27''$ (LT)
D = $1^\circ 00' 00''$	D = $0^\circ 24' 00''$
R = 5,729.58'	R = 14,323.95'
T = 637.91'	T = 613.81'
L = 1,270.58'	L = 1,226.88'
E = 35.40'	E = 13.15'
e = -----	e = -----
T.R. = -----	T.R. = -----
S.E. RUN = -----	S.E. RUN = -----
P.C. STA. = 307+15.93	P.C. STA. = 321+84.58
P.T. STA. = 319+86.52	P.T. STA. = 334+11.46

PROPOSED HORIZONTAL CURVE DATA

IL RTE 29			
PROP. CURVE IL29PCL2	PROP. CURVE IL29PCL3	PROP. CURVE IL29PCL4	PROP. CURVE IL29PCL5
PI STA. = 295+31.28	PI STA. = 297+93.89	PI STA. = 313+22.87	PI STA. = 327+98.40
$\Delta = 1^\circ 31' 39''$ (RT)	$\Delta = 1^\circ 31' 39''$ (LT)	$\Delta = 12^\circ 42' 22''$ (LT)	$\Delta = 4^\circ 54' 27''$ (LT)
D = $0^\circ 34' 54''$	D = $0^\circ 34' 54''$	D = $0^\circ 57' 09''$	D = $0^\circ 24' 00''$
R = 9,850.00'	R = 9,851.48'	R = 6,015.45'	R = 14,323.95'
T = 131.31'	T = 131.32'	T = 669.75'	T = 613.81'
L = 262.60'	L = 262.63'	L = 1,334.00'	L = 1,226.88'
E = 0.88'	E = 0.88'	E = 37.17'	E = 13.15'
e = NC	e = NC	e = 2.22'	e = NC
T.R. = N/A	T.R. = N/A	T.R. = 89.09'	T.R. = N/A
S.E. RUN = N/A	S.E. RUN = N/A	S.E. RUN = 98.00'	S.E. RUN = N/A
P.C. STA. = 293+99.98	P.C. STA. = 296+62.57	P.C. STA. = 306+53.13	P.C. STA. = 321+84.58
P.T. STA. = 296+62.57	P.T. STA. = 299+25.20	P.T. STA. = 319+87.13	P.T. STA. = 334+11.46

HORIZONTAL CURVE COORDINATE TABLE			
CURVE NO	ALIGNMENT POINT	N	E
IL 29 EXISTING			
IL29XCL16	PC	1437181.5862	2444933.0273
	PI	1436652.1788	2444577.1419
	PT	1436057.4601	2444346.4123
IL29XCL22	PC	1435872.8045	2444274.7724
	PI	1435300.5489	2444052.7576
	PT	1434711.3984	2443880.5116
IL 29 PROPOSED			
IL29PCL2	PC	1438273.7151	2445667.1935
	PI	1438164.7430	2445593.9389
	PT	1438057.7623	2445517.8055
IL29PCL3	PC	1438057.7623	2445517.8055
	PI	1437950.7674	2445441.6621
	PT	1437841.7809	2445368.3977
IL29PCL4	PC	1437237.6687	2444962.2932
	PI	1436681.8364	2444588.6442
	PT	1436057.4319	2444346.4004
IL29PCL5	PC	1435872.8045	2444274.7724
	PI	1435300.5489	2444052.7576
	PT	1434711.3984	2443880.5116

SIDE ROAD COORDINATE TABLE		
STATION EQUATION	N	E
CL WEST LANE STA 80+00 & CL IL RTE 29 STA 317+41.20 (EX)	1436284.2003	2444440.0117
CL WEST LANE STA 79+99.74 & CL IL RTE 29 STA 317+41.70 (PR)	1436284.3709	2444439.8132
CL IL RTE 98 STA 0+00 & CL IL RTE 29 STA 336+71.59 (EX & PR)	1434461.7228	2443807.5156



REVISIONS	
NAME	DATE

ILLINOIS DEPARTMENT OF TRANSPORTATION

IL RTE 29
WESLEY RD TO IL RTE 98
ALIGNMENT PLAN

SCALE: VERT. _____
HORIZ. _____

DATE _____ DRAWN BY _____
CHECKED BY _____

PLOT DATE = 4/18/2006
 PLOT SCALE = 200.0000 / IN.
 USER NAME = shouahz