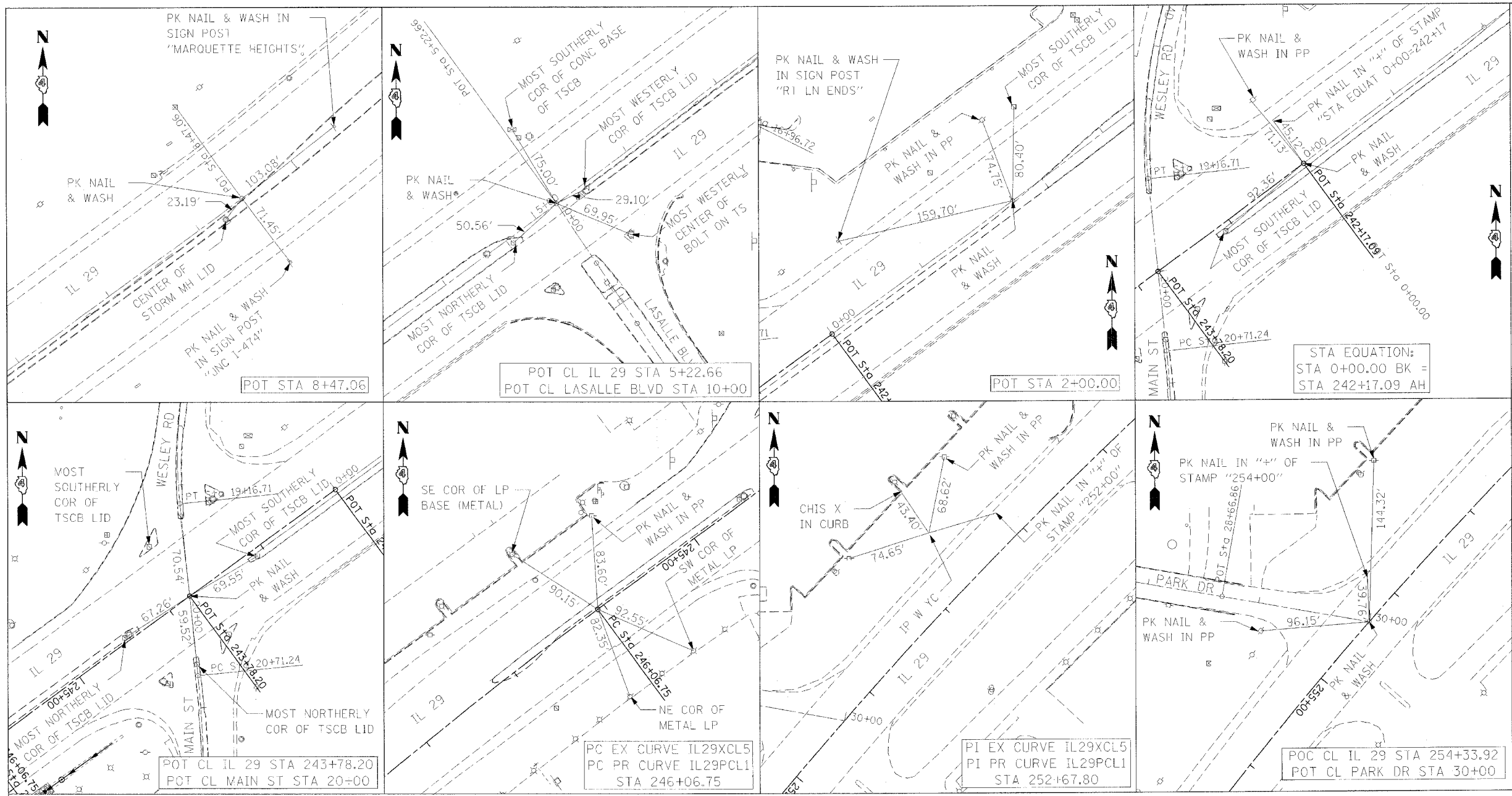


F.A.P. RTE.	SECTION	COUNTY	TOTAL SHEETS	SHEET NO.
669	11W-3,RS-8,*	TAZEWELL	442	63
STA.		TO STA.		
FED. ROAD DIST. NO.		ILLINOIS FED. AID PROJECT		
*11BR-1,11BR-2				



**BENCHMARKS**

**BM K235** - BRASS DISC SET IN SW COR OF STORM SEWER VAULT, W SIDE OF WESLEY ROAD, S SIDE OF SMALL CREEK, +/- 1/4 MILE N ALONG WESLEY ROAD FROM IL 29 INTERSECTION  
 OFFSET 25 FT +/- W OF CL OF WESLEY ROAD, EL 469.294

**TBM 1** - CHISLED SQUARE IN NW CORNER OF CONC BASE FOR ABOVE GROUND TRAFFIC SIGNAL VAULT, NE QUADRANT OF INTERSECTION OF IL 29 & WESLEY ROAD BY McDONALD'S  
 STA 242+47 +/-, OFFSET +/-90 FT RT, EL 477.54

**TBM D** - CHISLED '+' ON W BOLT OF TOP OF CONC LIGHT POLE BASE, FIRST LIGHT POLE N OF ENTRANCE TO LANDMARK DODGE  
 STA 250+08.72, OFFSET 109.36 FT LT, EL 469.65

**TBM 2** - CHISLED SQUARE ON TOP OF CONC LIGHT POLE BASE, W SIDE, AT SW CORNER OF SCHERER PONTIAC CAR LOT  
 STA 257+22.52, OFFSET 90.43 FT LT, EL 465.87

**\* BM M234** - BRASS DISC ON SW END OF S ABUTMENT OF BRIDGE FOR IL 29 OVER LICK CREEK IN N PEKIN, STR NO 090-0048  
 STA 276+26 +/-, OFFSET +/-33 FT RT, EL 464.947

**\* BM G** - CHISLED SQUARE ON MEDIAN ON IL 29  
 STA 290+00, OFFSET +/-0 FT, EL 458.97

**\* BM L234** - BRASS DISC ON TOP OF NE WINGWALL OF IL RT 29 BRIDGE OVER LICK CREEK, STR NO 090-0049  
 STA 301+35.01, OFFSET 34.28 FT LT (EXISTING) =  
 STA 301+35.07, OFFSET 41.28 FT LT, (PROPOSED), EL 459.448

**BM 1** - APEX OF ROW MARKER, NE QUADRANT OF IL 29 & WEST LANE  
 STA 317+02.12, OFFSET 57.03 FT LT (EXISTING) =  
 STA 317+02.83, OFFSET 57.36 FT LT (PROPOSED), EL 460.86

**\* BM J** - CHISLED SQUARE IN CENTER OF CONC MEDIAN ON IL 29  
 STA 325+00, OFFSET +/-0 FT, EL 462.34

**GPS 2026** - TOP OF SPIRE IN GPS MONUMENT VAULT, NE QUADRANT OF IL 29 & IL 98, SW CORNER OF CUPPI'S MOTOR MALL PARKING LOT  
 STA 334+81.28, OFFSET 62.04 FT LT, EL 462.26

**BM K234** - BRASS DISK SET ON STEEL POST, NE QUADRANT OF IL 29 & IL 98, 153 FT E OF IL 29 CL, 8 FT S OF S SIDE OF CUPPI'S MOTOR MALL PARKING LOT  
 STA 335+04.04, OFFSET 97.84 FT LT, EL 462.827

**GPS 2025** - TOP OF SPIRE IN GPS MONUMENT VAULT, +/-40 FT N OF BRENKMAN DRIVE (AUTO ROW), IN GRASS STRIPE BETWEEN IL 29 & FRONTAGE ROAD, EL 460.37

**TBM 3** - CHISLED SQUARE ON W SIDE OF CONC LIGHT POLE BASE, +/-60 FT S OF NW CORNER OF VELDE FORD TRUCK LOT, E SIDE OF IL 29  
 EL 463.39

**BM Q237** - BRASS DISK SET ON STEEL POST, NW CORNER OF SACRED HEART CEMETARY, W SIDE OF IL 29, 20 FT E OF E RAIL OF E SET OF RR TRACKS, EL 461.095

**GENERAL NOTES**

**BENCHMARKS BM M234, BM G, BM L234, AND BM J WILL BE DISTURBED OR DESTROYED DURING CONSTRUCTION ACTIVITIES. CONTRACTOR IS TO SET UP TEMPORARY BENCHMARKS FOR THOSE BENCHMARKS THAT ARE DISTURBED DURING CONSTRUCTION.**

**DURING REMOVAL OF THE EXISTING BRIDGES, THE CONTRACTOR SHALL CAREFULLY REMOVE THE EXISTING U.S.G.S. BENCH MARKERS L234 AND M234 AND DELIVER TO THE ENGINEER FOR FORWARDING TO THE DISTRICT 4 SURVEY SECTION.**

**A NEW MARKER SHALL BE INSTALLED FOR EACH OF THE NEW BRIDGES TO REPLACE BENCHMARKS L234 AND M234 AS DETAILED IN THE SPECIAL PROVISION TITLED "U.S.G.S. SURVEY MARKERS."**

REVISIONS	
NAME	DATE

ILLINOIS DEPARTMENT OF TRANSPORTATION

IL RTE 29  
 WESLEY RD TO IL RTE 98  
 TIES & BENCHMARKS

SCALE: VERT. \_\_\_\_\_  
 HORIZ. \_\_\_\_\_  
 DATE \_\_\_\_\_

DRAWN BY \_\_\_\_\_  
 CHECKED BY \_\_\_\_\_

PLOT DATE = 4/18/2006  
 FILE NAME = c:\projects\11w-3\p11w-3\p11w-3.dgn  
 PLOT SCALE = 50.0000 / 1.00  
 REFERENCE = NONE