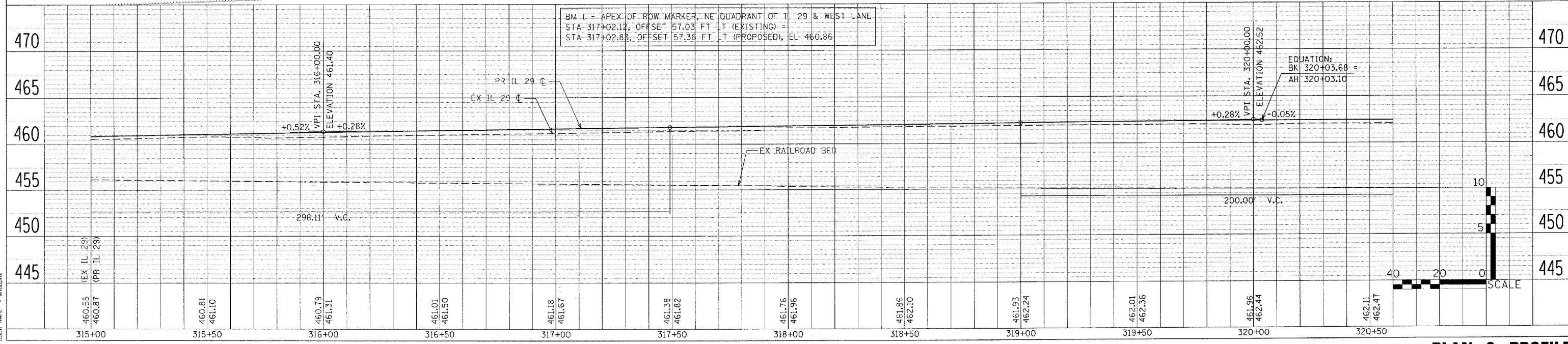
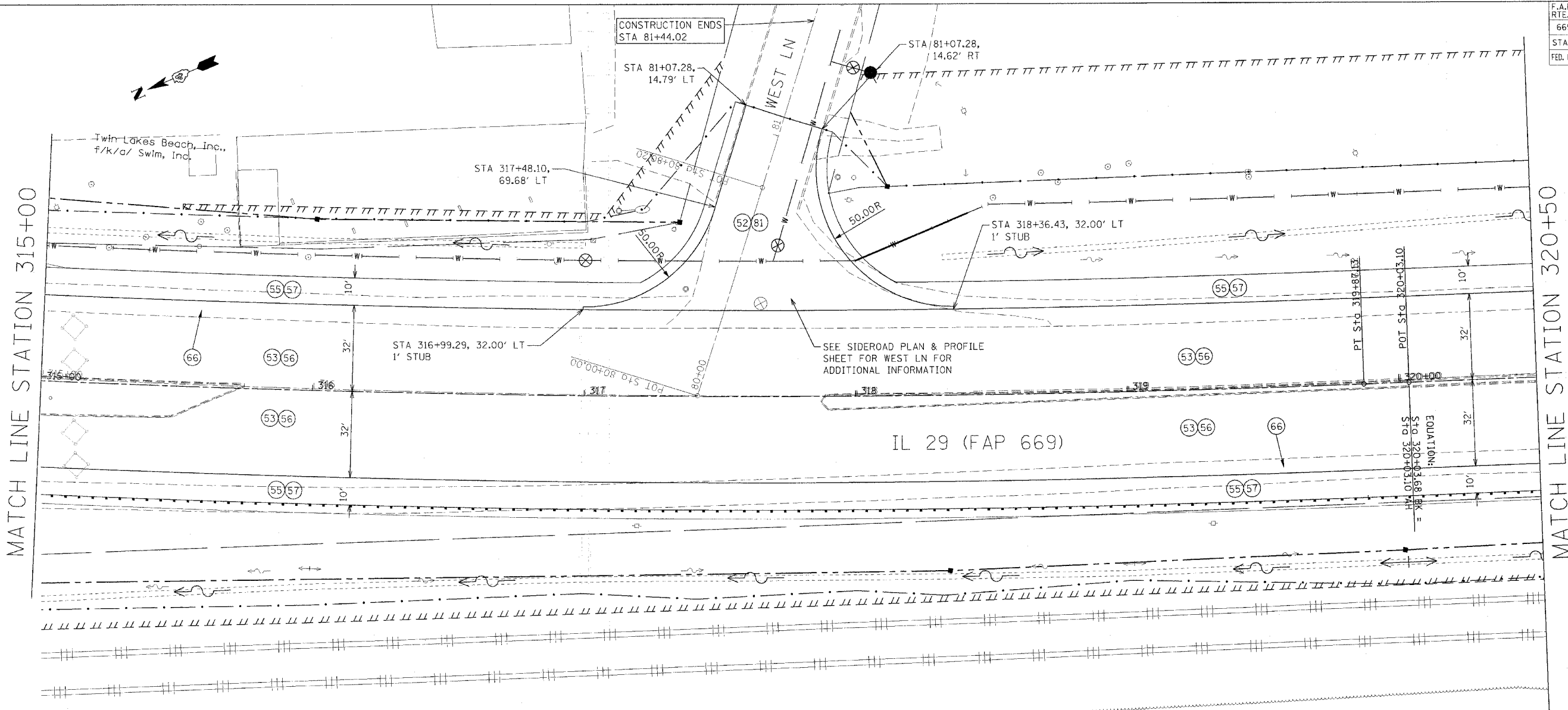


F.A.P. RTE.	SECTION	COUNTY	TOTAL SHEETS	SHEET NO.
669	11W-3,RS-8,*	TAZEWELL	442	83
STA. 315+00		TO STA. 320+50		
FED. ROAD DIST. NO.		ILLINOIS	FED. AID PROJECT	

• 11BR-1, 11BR-2

LEGEND

- (52) PR BIT BASE CSE SP 6 1/2"
- (53) PR POLY BIT CONC BIND CSE, SP, IL-19.0, N70 (VAR DEPTH)
- (55) PR BIT CONC SHOULDERS SP 6 1/2"
- (56) PR POLY BIT CONC SURF CSE, SP, MIX "E", N70 (1 1/2")
- (57) PR BIT CONC SHOULDERS SP 1 1/2"
- (66) PR PCC BASE CSE WID (VAR DEPTH)
- (81) PR BIT CONC SURF CSE, SP, MIX "C", N50 (1 1/2")



BM I - APEX OF ROW MARKER, NE QUADRANT OF IL 29 & WEST LANE
 STA 317+02.12, OFFSET 57.03 FT LT (EXISTING) = EL 460.86
 STA 317+02.85, OFFSET 57.36 FT LT (PROPOSED), EL 460.86

EQUATION:
 BK 320+03.68 =
 AH 320+03.10

PLAN

DATE	BY

PROFILE

DATE	BY

PLOT DATE = 4/18/2006
 FILE NAME = A:\300\proj\chase_11\200\11br01.dgn
 PLOT SCALE = 20.0000 / IN.
 USER NAME = ahhughz

PLAN & PROFILE