

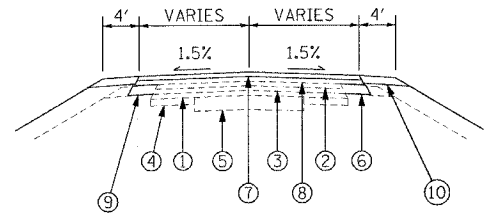
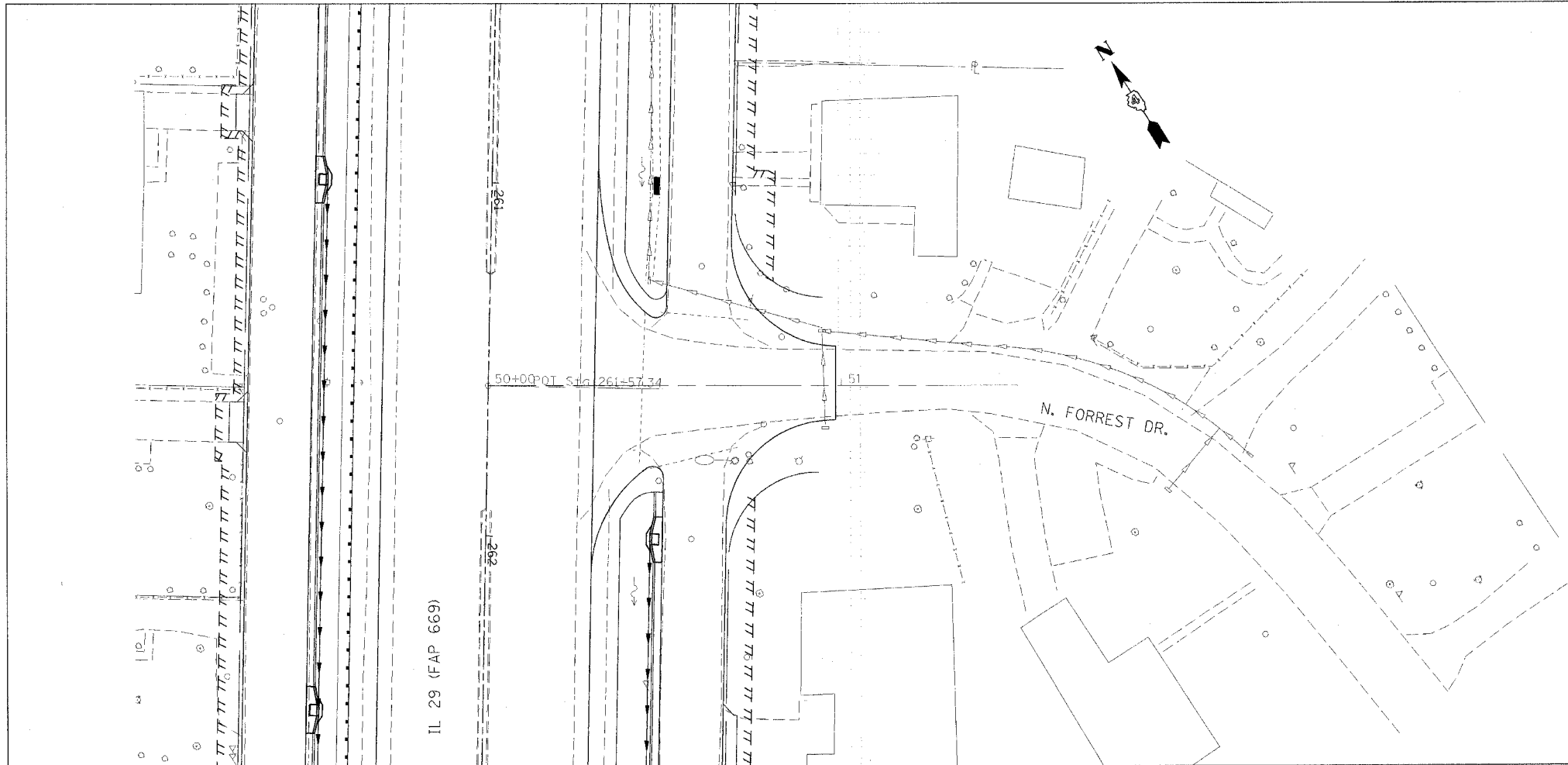
F.A.P. RTE.	SECTION	COUNTY	TOTAL SHEETS	SHEET NO.
669	11W-3,RS-8,*	TAZEWELL	442	89
STA.		TO STA.		
FED. ROAD DIST. NO.		ILLINOIS FED. AID PROJECT		

\* 11BR-1, 11BR-2

PLAN	DATE
BY	
CHECKED	
NOTED	
NO. OF REV.	
FILE NAME	

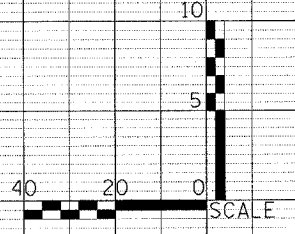
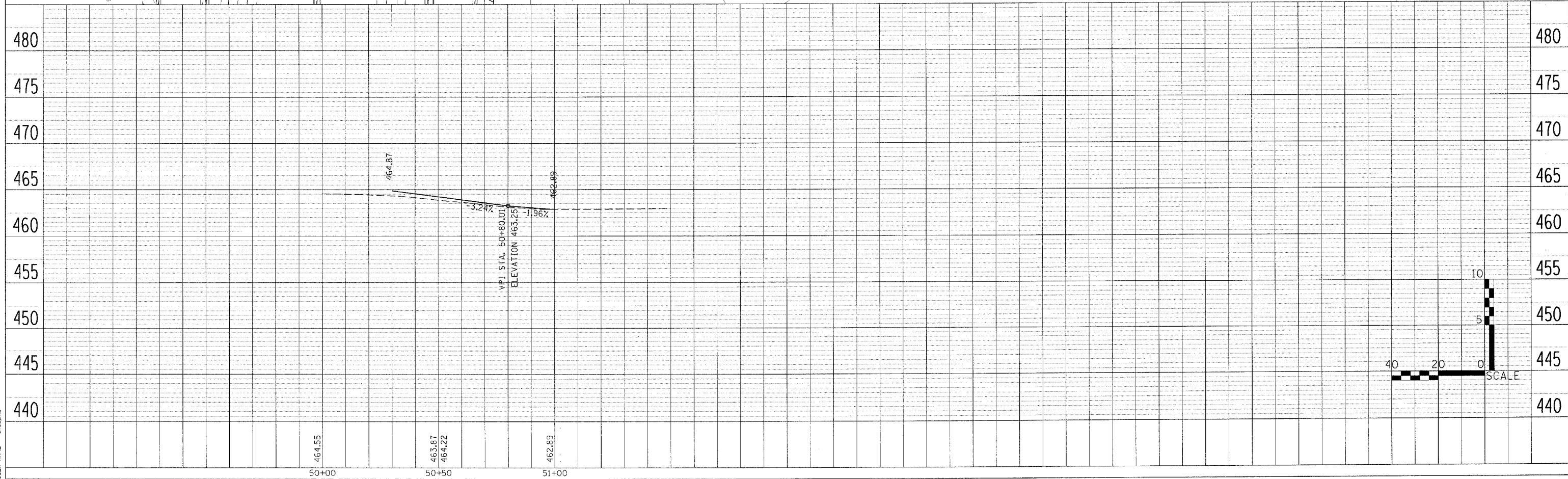
PROFILE	DATE
BY	
CHECKED	
NOTED	
NO. OF REV.	
FILE NAME	

PLOT DATE = 4/18/2006  
 FILE NAME = c:\projects\88804\11w-3\p1\p1.dgn  
 PLOT SCALE = 20.00000 / IN.  
 USER NAME = shouphz



- ① EXISTING BIT CONC SURF CSE
- ② EXISTING BIT CONC SURF CSE 1"
- ③ EXISTING BIT CONC LEVELING BINDER 1"
- ④ EXISTING BIT CONC BASE CSE WIDENING 6"
- ⑤ EXISTING AGGREGATE BASE CSE 12"
- ⑥ EXISTING AGGREGATE SHOULDER
- ⑦ PROP BIT CONC SURF CSE, SUPER, MIX "C", N50 (1 1/2")
- ⑧ PROP BIT CONC BINDER CSE, SUPER, IL 19.0, N50 (VAR DEPTH)
- ⑨ PROP BIT CONC BASE CSE, SUPER 6 1/2"
- ⑩ BIT CONC SHLDRS, SUPER 8"

NOTE: SEE IL 29 MAINLINE PLAN & PROFILE SHEETS FOR ADDITIONAL INFORMATION



N. FORREST DR.