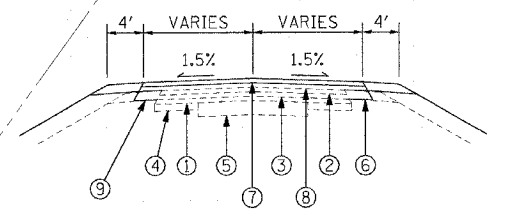
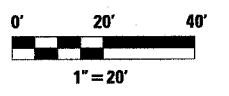
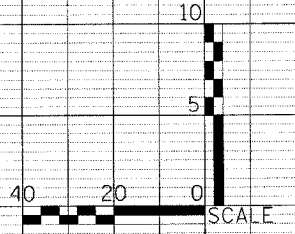
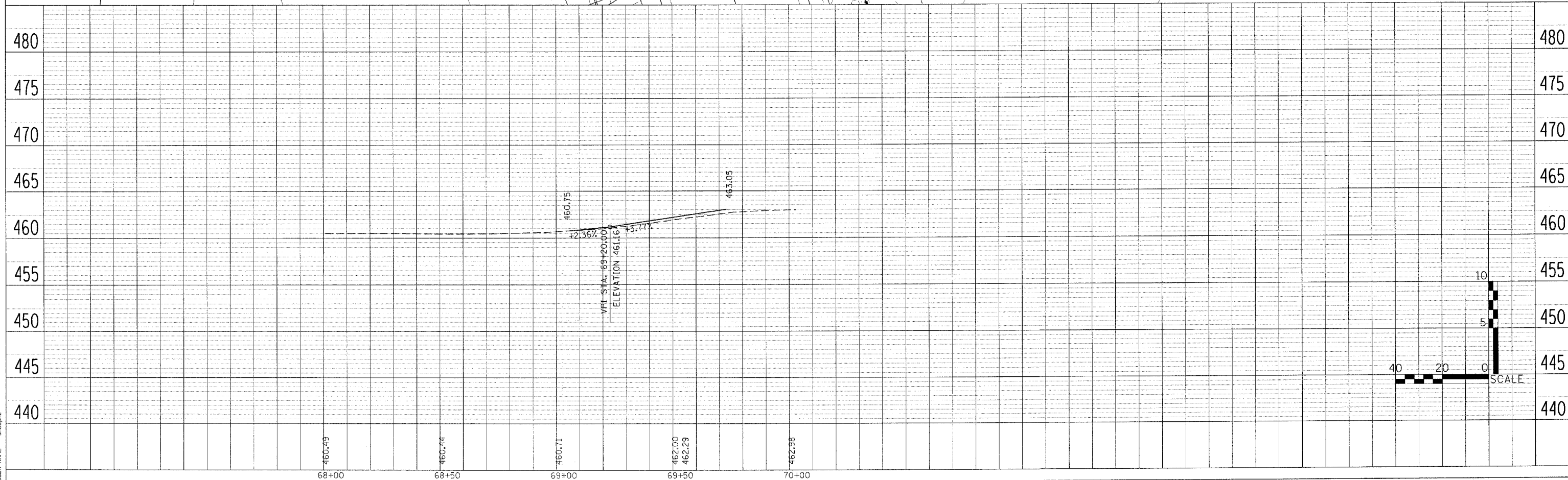
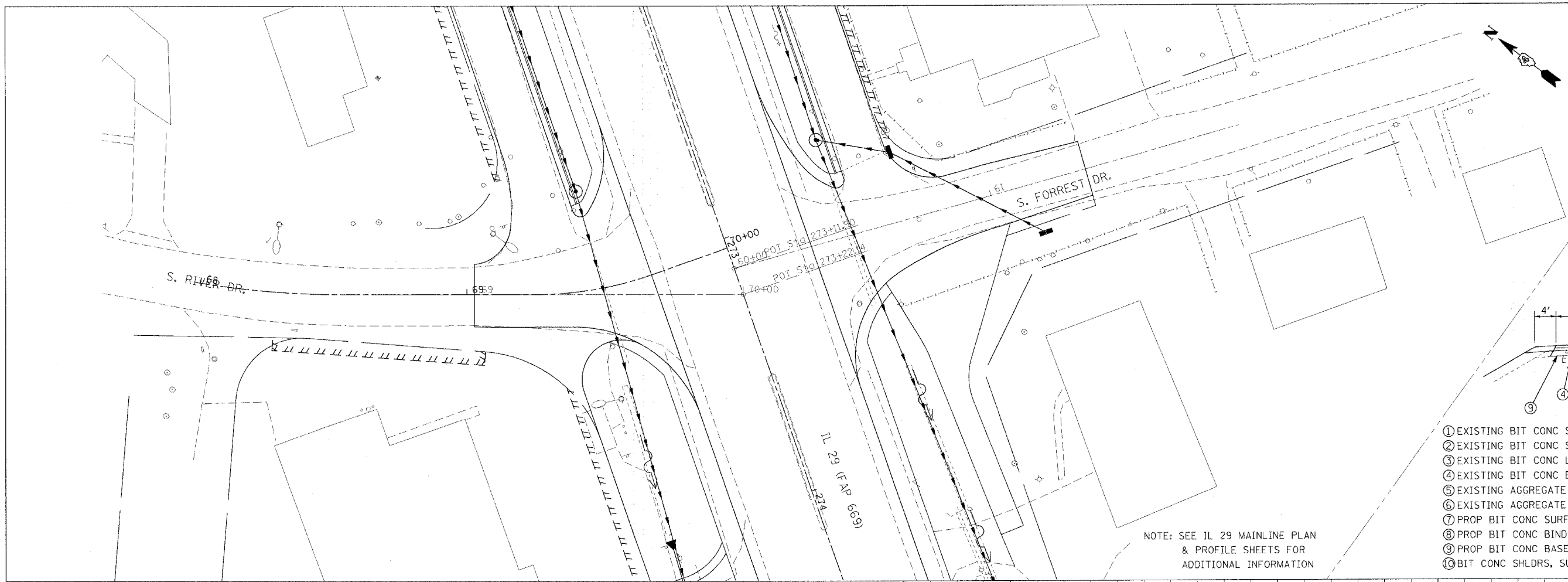


F.A.P. RTE.	SECTION	COUNTY	TOTAL SHEETS	SHEET NO.
669	11W-3,RS-8,*	TAZEWELL	442	90
STA. TO STA.		FED. AID PROJECT		
FED. ROAD DIST. NO.		ILLINOIS	11BR-1, 11BR-2	



- ① EXISTING BIT CONC SURF CSE
- ② EXISTING BIT CONC SURF CSE 1"
- ③ EXISTING BIT CONC LEVELING BINDER 1"
- ④ EXISTING BIT CONC BASE CSE WIDENING 6"
- ⑤ EXISTING AGGREGATE BASE CSE 12"
- ⑥ EXISTING AGGREGATE SHOULDER
- ⑦ PROP BIT CONC SURF CSE, SUPER, MIX "C", N50 (1 1/2")
- ⑧ PROP BIT CONC BINDER CSE, SUPER, IL 19.0, N50 (VAR DEPTH)
- ⑨ PROP BIT CONC BASE CSE, SUPER 6 1/2"
- ⑩ BIT CONC SHLDRS, SUPER 8"

NOTE: SEE IL 29 MAINLINE PLAN & PROFILE SHEETS FOR ADDITIONAL INFORMATION



PLAN	SURVEYED	BY	DATE
	PLOTTED		
	NOTED		
	NO. OF WAY CLEAR		
	ROAD FILL NAME		

PROFILE	SURVEYED	BY	DATE
	PLOTTED		
	NOTED		
	NO. OF WAY CLEAR		
	STRUCTURE NOTATIONS		

PLOT DATE = 4/19/2006
 FILE NAME = c:\11w-3\11w-3\11w-3\11w-3.dgn
 PLOT SCALE = 20.0000 / 1 IN.
 USER NAME = ahough