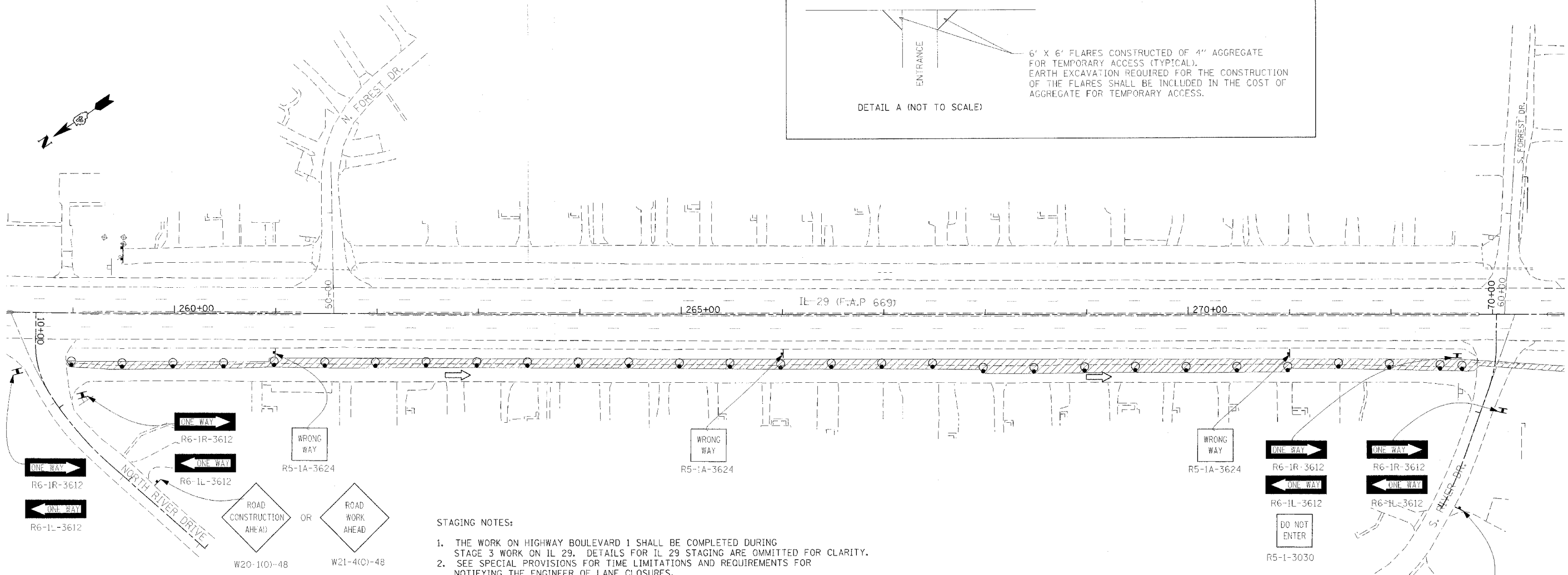
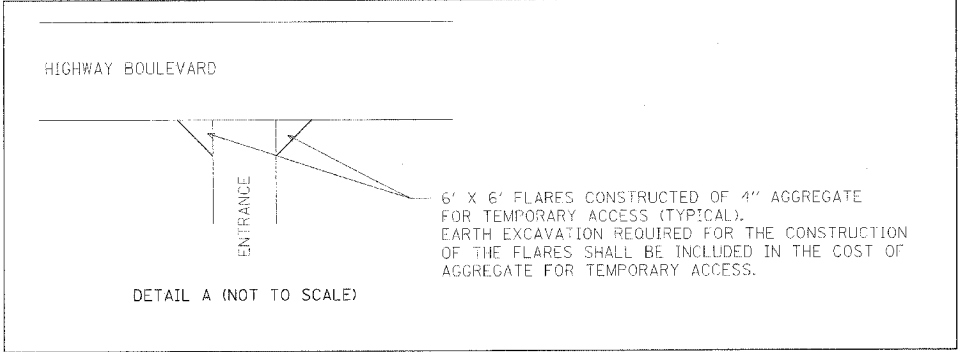


F.A.P. RTE.	SECTION	COUNTY	TOTAL SHEETS	SHEET NO.
669	11W-3,RS-8,*	TAZEWELL	442	124
STA. 258+30		TO STA. 273+70		
FED. ROAD DIST. NO.		ILLINOIS	FED. AID PROJECT	



**STAGING NOTES:**

1. THE WORK ON HIGHWAY BOULEVARD 1 SHALL BE COMPLETED DURING STAGE 3 WORK ON IL 29. DETAILS FOR IL 29 STAGING ARE OMITTED FOR CLARITY.
2. SEE SPECIAL PROVISIONS FOR TIME LIMITATIONS AND REQUIREMENTS FOR NOTIFYING THE ENGINEER OF LANE CLOSURES.

**SYMBOLS**

- ↑ Arrow board
- ▨ Work area
- † Sign
- ⬆ Direction indicator barricade with steady burn monodirectional light
- ⊙ Drum with steady burn monodirectional light
- ⊘ Type III barricade with flashing monodirectional lights
- Flexible delineator
- ⊚ Type II barricade, drum, or vertical barricade with steady burn monodirectional light

- CONSTRUCTION**
1. CONSTRUCT TEMPORARY 6' FLARES ON ENTRANCES. SEE DETAIL A.
  2. REMOVE EXISTING PAVEMENT TO THE LIMITS SHOWN ON THE STAGING TYPICALS.
  3. INSTALL STORM SEWER AND DRAINAGE STRUCTURES. THE STORM SEWER TRENCH SHALL BE BACKFILLED UP TO THE LEVEL OF THE PROPOSED SUBGRADE BY THE END OF EACH WORK DAY.
  4. CONSTRUCT THE CURB AND GUTTER.
  5. PLACE AGGREGATE FOR TEMPORARY ACCESS ALONG THE CURB AND GUTTER AS SHOWN ON THE STAGING TYPICALS.

- TRAFFIC CONTROL**
- MAKE HIGHWAY BOULEVARD 1 ONE-WAY SOUTHBOUND, MAINTAINING ONE OPEN LANE OF TRAFFIC.
  - MAINTAIN ONE OPEN LANE SOUTHBOUND.
  - MAINTAIN ONE OPEN LANE SOUTHBOUND.
  - MAINTAIN ONE OPEN LANE SOUTHBOUND.
  - MAINTAIN ONE OPEN LANE SOUTHBOUND.



REVISIONS	
NAME	DATE

ILLINOIS DEPARTMENT OF TRANSPORTATION  
 FRONTAGE ROAD  
 SUGGESTED STAGES OF CONSTRUCTION  
 AND TRAFFIC CONTROL  
 STAGE 3A

SCALE: VERT. \_\_\_\_\_  
 HORIZ. \_\_\_\_\_  
 DATE \_\_\_\_\_

DRAWN BY \_\_\_\_\_  
 CHECKED BY \_\_\_\_\_

PLOT DATE = 4/18/2006  
 FILE NAME = c:\projects\2006\11\11br-1\11br-1.dgn  
 PLOT SCALE = 1/8"=1'-0"  
 USER NAME = horek