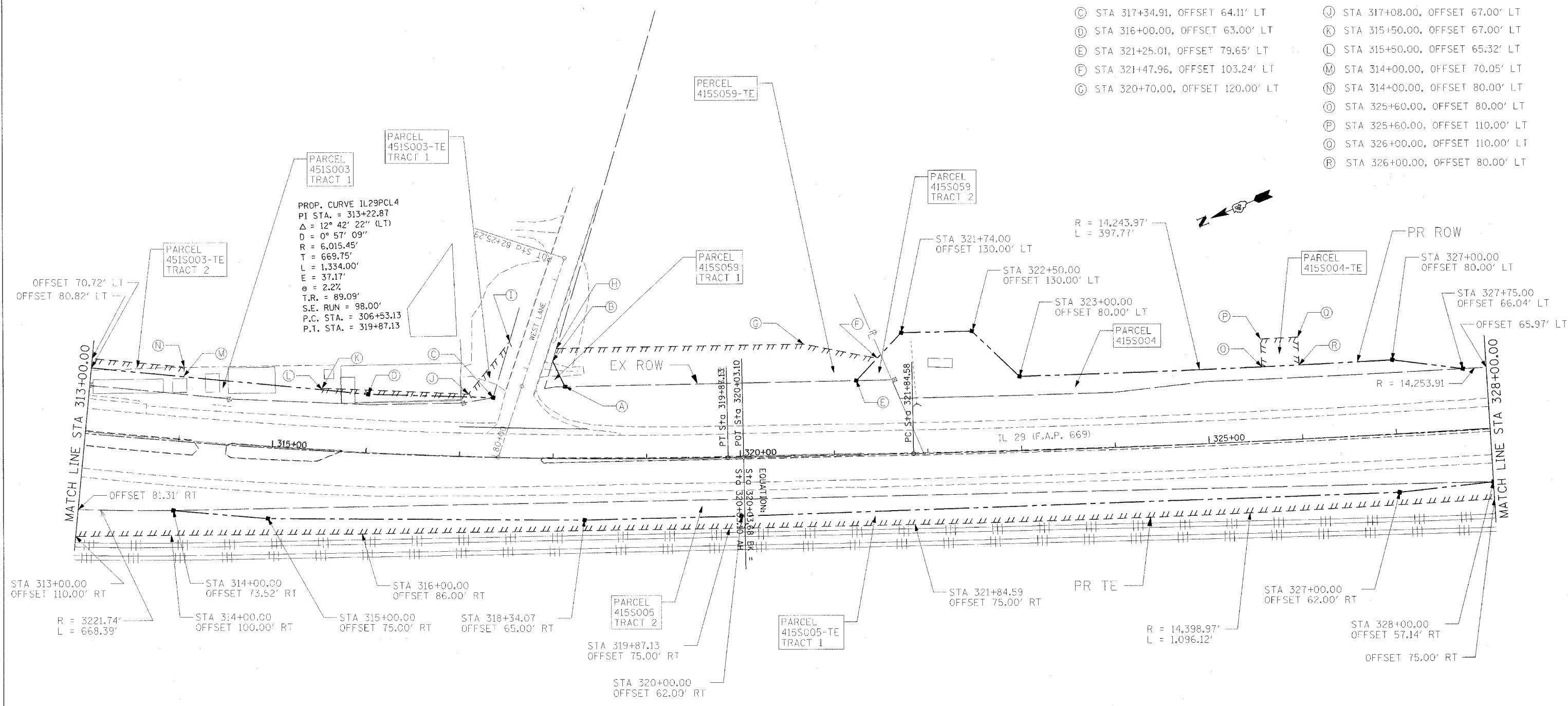


STATE OF ILLINOIS  
DEPARTMENT OF TRANSPORTATION

- (A) STA 318+12.28, OFFSET 76.96' LT
- (B) STA 317+98.73, OFFSET 104.38' LT
- (C) STA 317+34.91, OFFSET 64.11' LT
- (D) STA 316+00.00, OFFSET 63.00' LT
- (E) STA 321+25.01, OFFSET 79.65' LT
- (F) STA 321+47.96, OFFSET 103.24' LT
- (G) STA 320+70.00, OFFSET 120.00' LT
- (H) STA 318+02.63, OFFSET 118.00' LT
- (I) STA 317+51.53, OFFSET 124.56' LT
- (J) STA 317+08.00, OFFSET 67.00' LT
- (K) STA 315+50.00, OFFSET 67.00' LT
- (L) STA 315+50.00, OFFSET 65.32' LT
- (M) STA 314+00.00, OFFSET 70.05' LT
- (N) STA 314+00.00, OFFSET 80.00' LT
- (O) STA 325+60.00, OFFSET 80.00' LT
- (P) STA 325+60.00, OFFSET 110.00' LT
- (Q) STA 326+00.00, OFFSET 110.00' LT
- (R) STA 326+00.00, OFFSET 80.00' LT



| PARCEL             | OWNER                                    | EASEMENT PURPOSE | ENGLISH    |                 |                  |          |
|--------------------|--|------------------|------------|-----------------|------------------|----------|
|                    |  |                  | TOTAL AREA | AREA TAKEN ADD. | REM. AREA EXIST. | EASEMENT |
| 415S003 TRACT 1    | TWIN LAKES BEACH, INC., F/K/A SWIM, INC. |                  | 0.183      |                 |                  | PR ROW   |
| 415S003-TE TRACT 1 | TWIN LAKES BEACH, INC., F/K/A SWIM, INC. |                  | 0.032      |                 |                  | TE       |
| 415S003-TE TRACT 2 | TWIN LAKES BEACH, INC., F/K/A SWIM, INC. |                  | 0.079      |                 |                  | TE       |
| 415S004            | MONGE PROPERTY MANAGEMENT CO.            |                  | 0.353      |                 |                  | PR ROW   |
| 415S004-TE         | MONGE PROPERTY MANAGEMENT CO.            |                  | 0.027      |                 |                  | TE       |
| 415S005 TRACT 2    | PEORIA & PEKIN UNION RAILWAY COMPANY     |                  | 0.420      |                 |                  | PR ROW   |
| 415S005-TE TRACT 1 | PEORIA & PEKIN UNION RAILWAY COMPANY     |                  | 1.016      |                 |                  | TE       |
| 415S059 TRACT 1    | RICHARD S. HUEBNER & JANE S. HUEBNER     |                  | 0.007      |                 |                  | PR ROW   |
| 415S059 TRACT 2    | RICHARD S. HUEBNER & JANE S. HUEBNER     |                  | 0.012      |                 |                  | PR ROW   |
| 415S059-TE         | RICHARD S. HUEBNER & JANE S. HUEBNER     |                  | 0.298      |                 |                  | TE       |

AREAS ARE IN ACRES UNLESS NOTED.



**RIGHT OF WAY PLANS**  
 ROUTE FAP 669 (IL RTE 29)  
 SECTION 11W-3, RS-8, 11BR-1, 11BR-2  
 PROJECT  
 COUNTY TAZEWELL  
 JOB NO. C-94-130-96  
 STA 313+00 TO STA 328+00  
 SCALE 1 :  
 SHEET NO. 190 OF 442

PLOT DATE = 4/18/2006  
 PLOT NAME = 59A0200 / IN.  
 PLOT SCALE = 59A0200 / IN.  
 USER NAME = shouphiz