

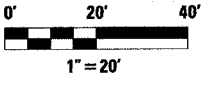
F.A.P. RTE.	SECTION	COUNTY	TOTAL SHEETS	SHEET NO.
669	11W-3,RS-8,*	TAZEWELL	442	214
STA. 270+00		TO STA.275+00		
FED. ROAD DIST. NO.	ILLINOIS	FED. AID PROJECT		
• 11BR-1, 11BR-2				

LEGEND

	SEDIMENT BASIN
	INLET AND PIPE PROTECTION
	PERIMETER EROSION BARRIER
	TEMPORARY DITCH CHECK
	LIMITS OF CONSTRUCTION
	EROSION CONTROL BLANKET
	STONE RIPRAP, CLASS SPECIFIED
	FABRIC FORMED REVETMENT MAT
	MULCH, METHOD 2
	SODDING

General Notes

1. ALL PERMANENT EROSION CONTROL MEASURES SHALL BE CONSTRUCTED AS SOON AS PRACTICAL.
2. TEMPORARY SEEDING SHALL BE PLACED WHEN THE GROUND HAS BEEN DISTURBED AND PLACEMENT OF PERMANENT SEEDING IS NOT PRACTICAL OR AS DIRECTED BY THE ENGINEER.
3. PLACE SEEDING, CLASS 2A IN AREAS USING MULCH, METHOD 2 AND EROSION CONTROL BLANKET.
4. CONTACT THE DISTRICT 4 LANDSCAPE ARCHITECT AT (309) 671-4484 FOR TREE PLANTING LOCATIONS AT LEAST 2 WEEKS PRIOR TO PLANTING TREES.

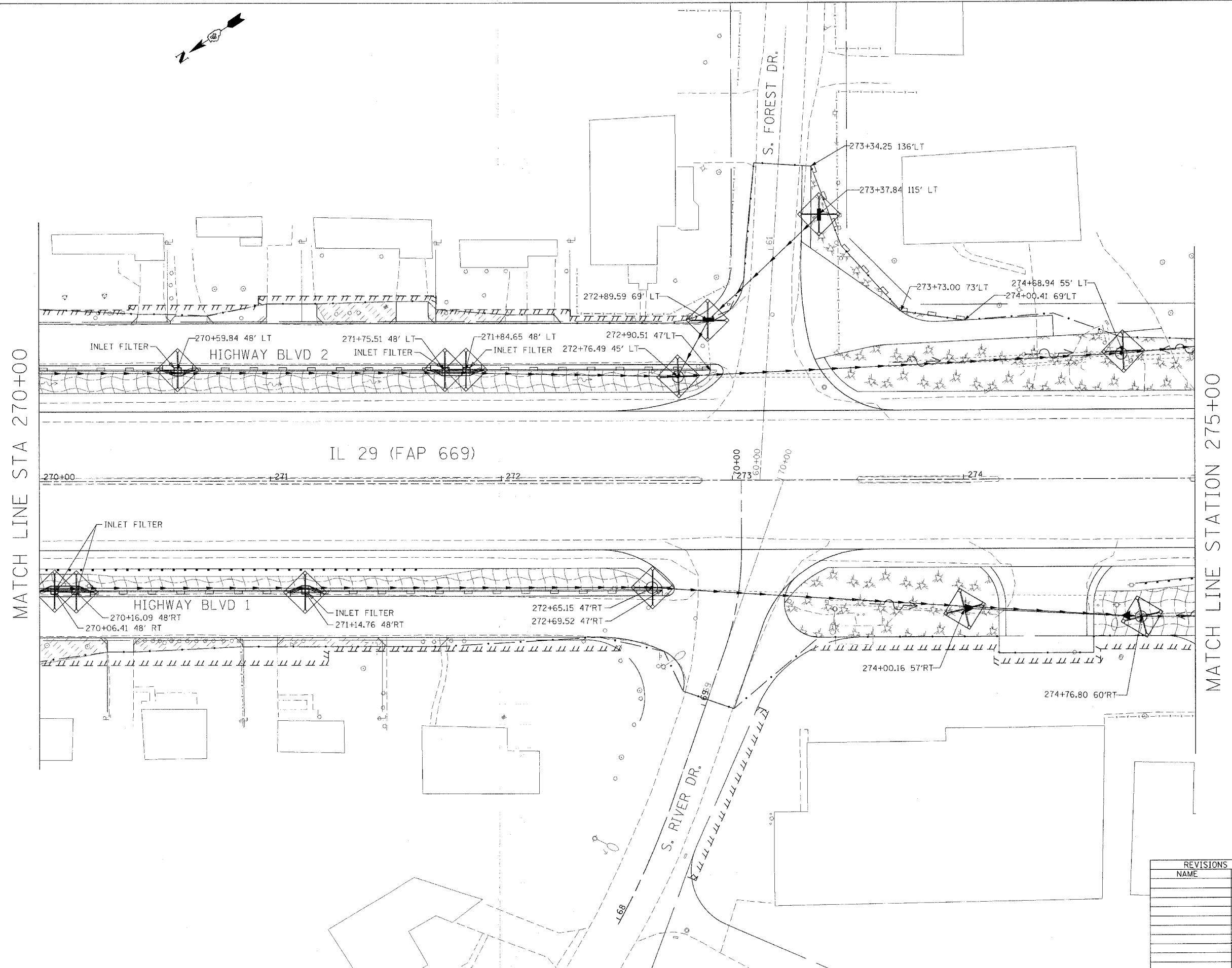


REVISIONS	
NAME	DATE

ILLINOIS DEPARTMENT OF TRANSPORTATION

EROSION CONTROL & LANDSCAPING PLANS

SCALE: VERT. _____
 HORIZ. _____
 DATE _____ DRAWN BY _____
 CHECKED BY _____



PLOT DATE = 4/18/2008
 FILE NAME = \\s:\projects\chase\112861\88804.dgn
 PLOT SCALE = 20.0000 / IN.
 USER NAME = shouhzh