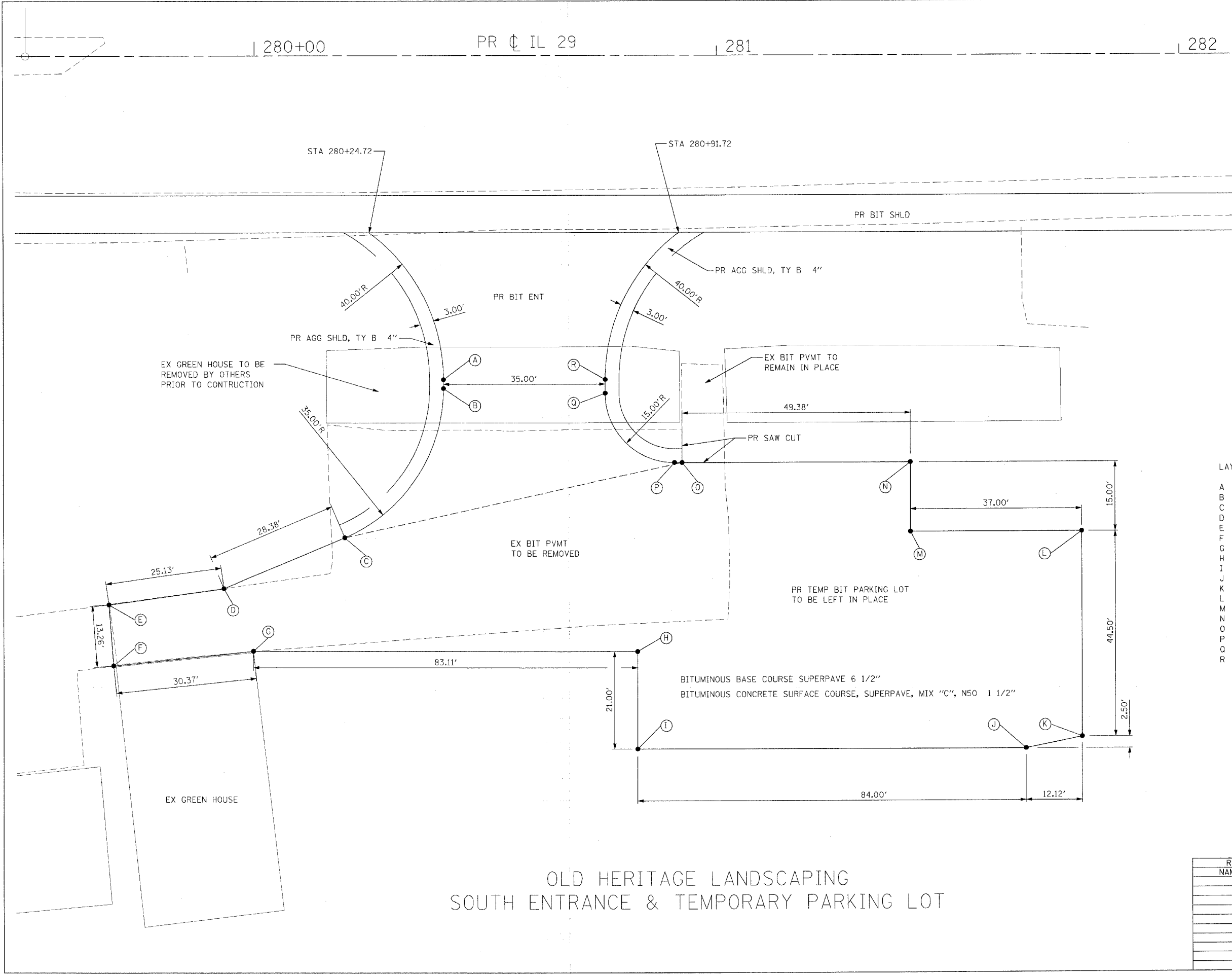
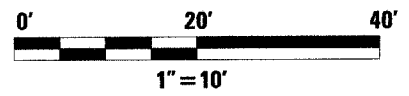


F.A.P. RTE.	SECTION	COUNTY	TOTAL SHEETS	SHEET NO.
669	11W-3,RS-8,*	TAZEWELL	442	233
STA.		TO STA.		
FED. ROAD DIST. NO.		ILLINOIS	FED. AID PROJECT	



LAYOUT LEGEND

A	STA. 280+40.72, 70.00' RT
B	STA. 280+40.72, 71.92' RT
C	STA. 280+19.36, 104.15' RT
D	STA. 279+93.18, 115.23' RT
E	STA. 279+68.30, 118.74' RT
F	STA. 279+69.28, 131.96' RT
G	STA. 279+99.50, 128.84' RT
H	STA. 280+82.61, 129.01' RT
I	STA. 280+82.61, 150.01' RT
J	STA. 281+66.61, 150.01' RT
K	STA. 281+78.73, 147.51' RT
L	STA. 281+78.73, 103.01' RT
M	STA. 281+41.73, 103.01' RT
N	STA. 281+41.73, 88.01' RT
O	STA. 280+92.35, 88.01' RT
P	STA. 280+90.72, 88.01' RT
Q	STA. 280+75.72, 73.01' RT
R	STA. 280+75.72, 70.00' RT



OLD HERITAGE LANDSCAPING
SOUTH ENTRANCE & TEMPORARY PARKING LOT

REVISIONS	
NAME	DATE

ILLINOIS DEPARTMENT OF TRANSPORTATION

**ENTRANCE
DETAILS**

SCALE: VERT. HORIZ.
DATE

DRAWN BY
CHECKED BY

PLOT DATE = 4/18/2006
 PLOT SCALE = 1/8" = 10'-0"
 USER NAME = shouphz