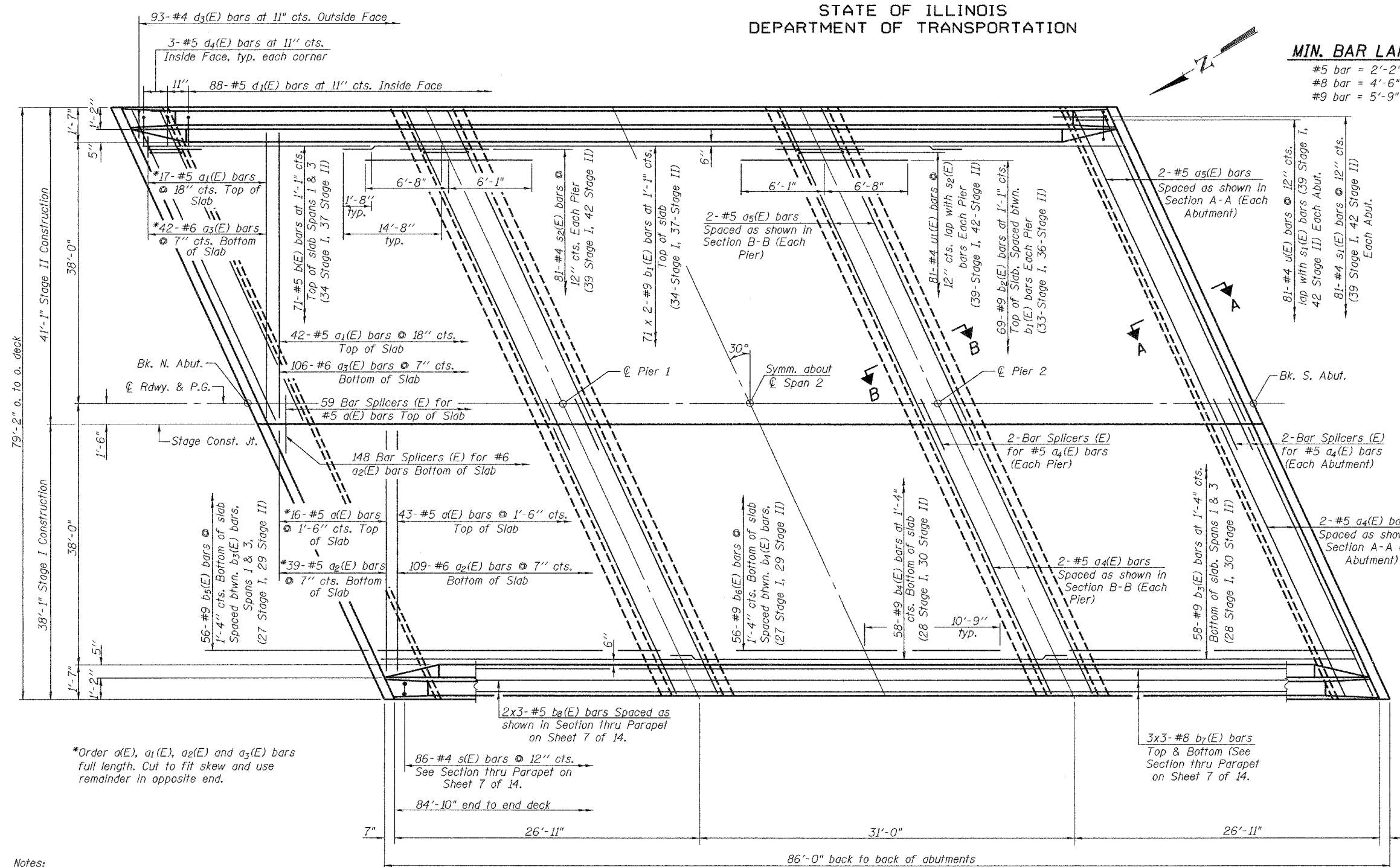


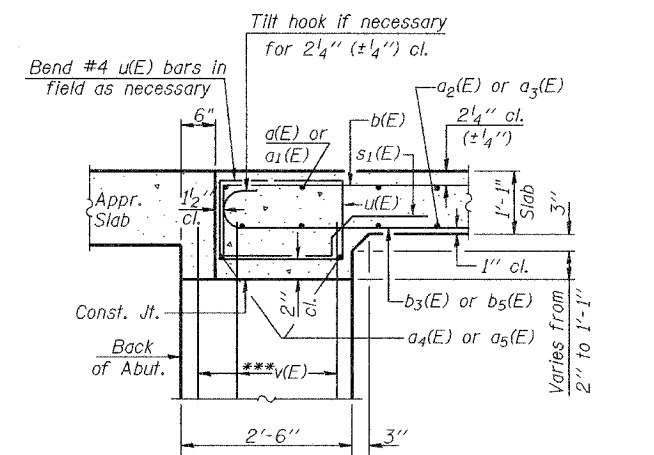
STATE OF ILLINOIS
DEPARTMENT OF TRANSPORTATION

ROUTE NO.	SECTION	COUNTY	TOTAL SHEETS	SHEET NO.	SHEET NO. 6
F.A.P. 669	IIBR-2	TAZEWELL	442	261	14 SHEETS
FED. ROAD DIST. NO. 7	BLISS	FED. AID PROJECT			

Contract #88804

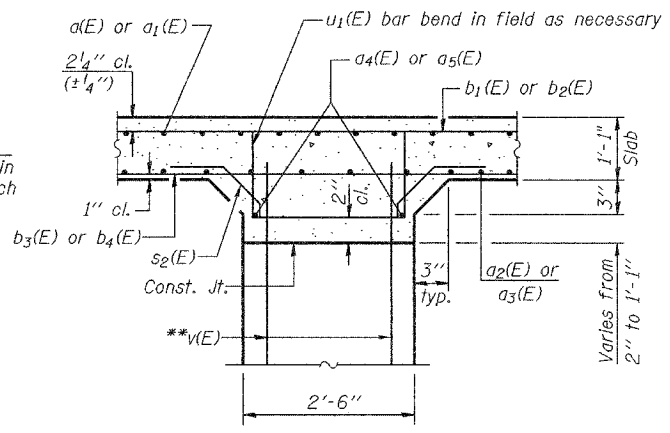


MIN. BAR LAPS
 #5 bar = 2'-2"
 #8 bar = 4'-6"
 #9 bar = 5'-9"



SECTION A-A

***v(E) bars billed with abutments. See sheets 8 & 9 of 14.
Horizontal Dimensions @ Rt. L's to Abutments.



SECTION B-B

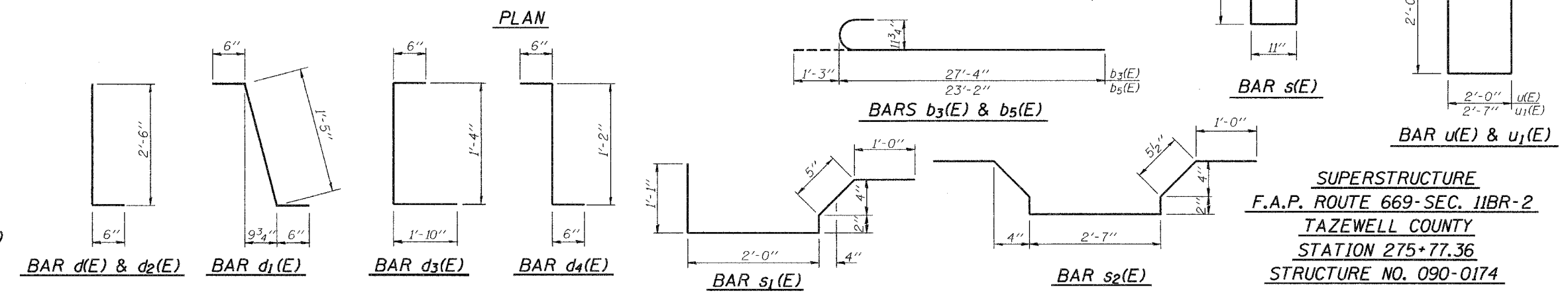
**v(E) bars billed with piers. See sheet 10 of 14.
Horizontal Dimensions @ Rt. L's to Pier

*Order a(E), a1(E), a2(E) and a3(E) bars full length. Cut to fit skew and use remainder in opposite end.

Notes:
 See sheet 7 of 14 for superstructure details, parapet reinforcement and Bill of Material.
 Reinforcement bars designated (E) shall be epoxy coated.
 Bars indicated thus 71 x 2-#5 etc. indicates 71 lines of bars with 2 lengths per line.
 See sheet 1 of 14 for floor drain spacing. Space reinforcement bars to clear drains.
 For bar splicer details see sheet 11 of 14.

DESIGNED	Phillip E Coppernoll
CHECKED	Ray Ahanchi
DRAWN	Amber M. Seiber
CHECKED	PEC/GRA

May 5 2006
 EXAMINED *Thomas J. Domagalaki*
 ENGINEER OF BRIDGE DESIGN
 PASSED *Ralph E. Anderson*
 ENGINEER OF BRIDGES AND STRUCTURES



SUPERSTRUCTURE
 F.A.P. ROUTE 669-SEC. IIBR-2
 TAZEWELL COUNTY
 STATION 275+77.36
 STRUCTURE NO. 090-0174