

STATE OF ILLINOIS
DEPARTMENT OF TRANSPORTATION

ROUTE NO.	SECTION	COUNTY	SHEET NO.	SHEET NO.
F.A.P. 669	IIBR-2	TAZEWELL	442	Zb5
FED. ROAD DIST. NO. 7		ILLINOIS	FED. AID PROJECT-	

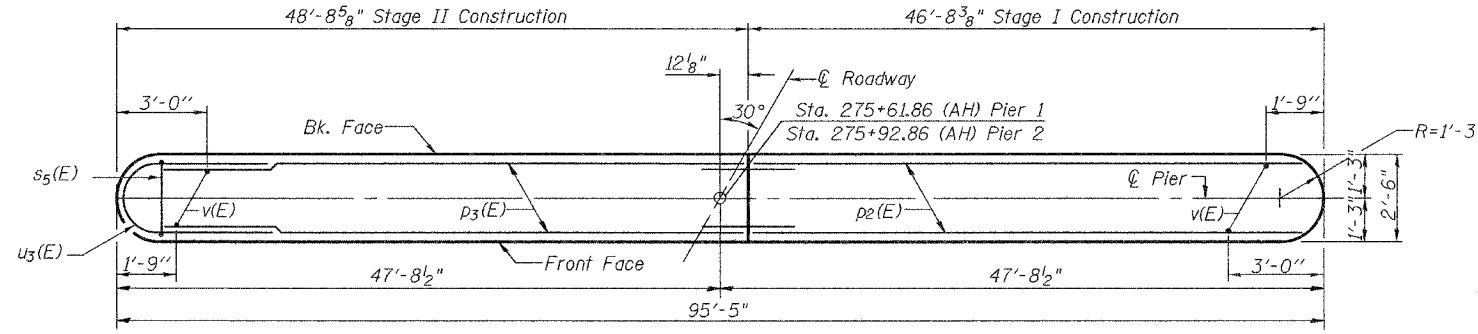
Contract #88804

SHEET NO. 10

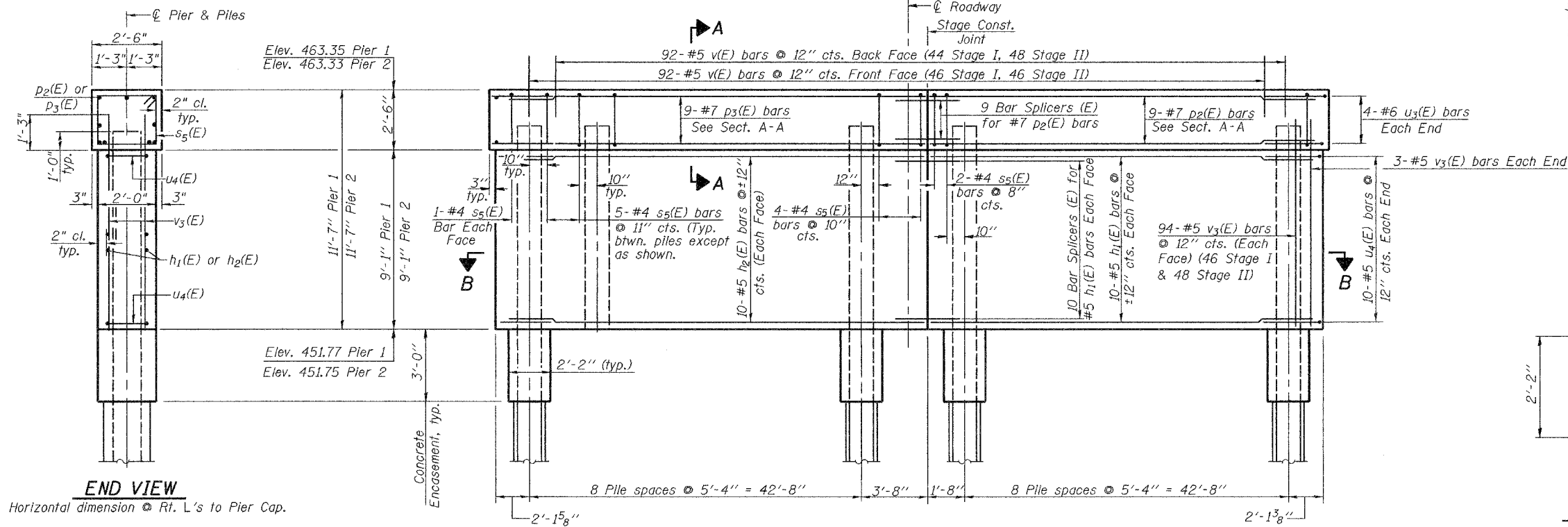
14 SHEETS

PILE DATA

Type: 14" ϕ Metal Pile Shells
Design Capacity: 40 Tons
Est. Length: 61' Pier 1 & 56' Pier 2
No. Required: 17+1 Test Pile (Pier 1)
18 (Pier 2)



TOP PLAN

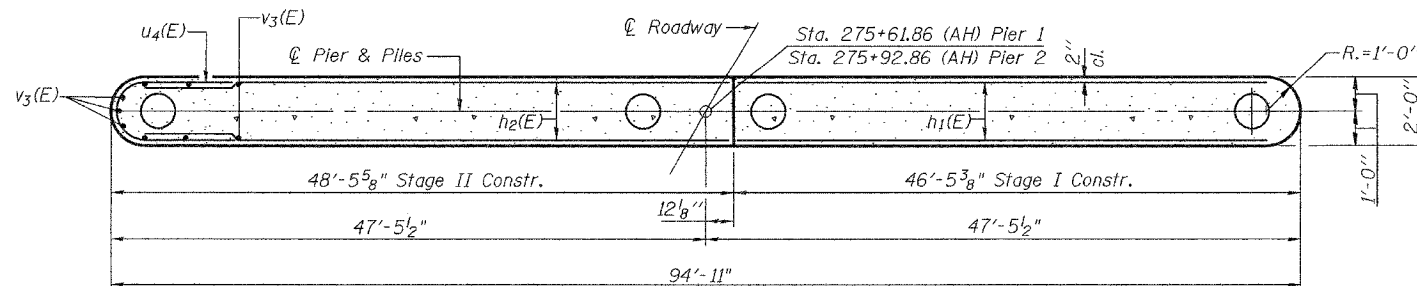


ELEVATION
(Looking South)

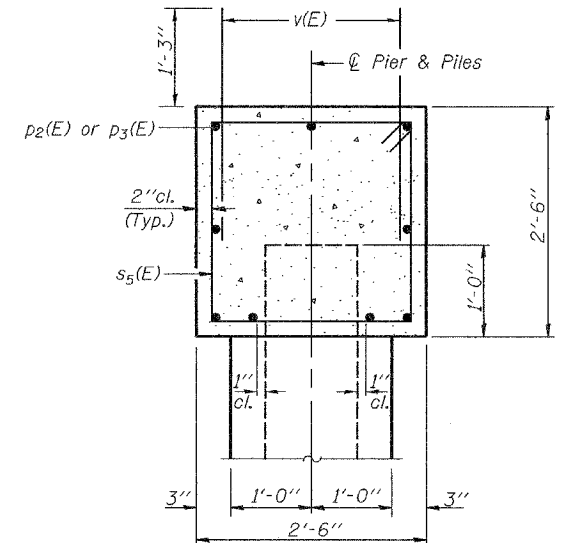
END VIEW

Horizontal dimension @ Rt. L's to Pier Cap.

*For Concrete Encasement details
See sheet 12 of 14.



SECTION B-B



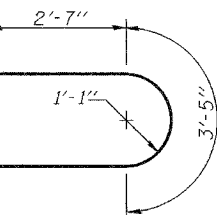
SECTION A-A

Horizontal dimension @ Rt. L's to Pier Cap.

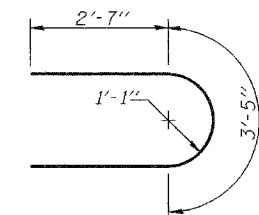
**TWO PIERS
BILL OF MATERIAL**

Bar	No.	Size	Length	Shape
h1(E)	40	#5	45'-3"	—
h2(E)	40	#5	47'-3"	—
p2(E)	18	#7	45'-3"	—
p3(E)	18	#7	47'-3"	—
s5(E)	176	#4	9'-5"	□
u3(E)	16	#6	8'-7"	U
u4(E)	40	#5	6'-11"	U
v(E)	368	#5	2'-6"	—
v3(E)	388	#5	10'-6"	—
Concrete Structures			Cu. Yd.	171.2
Reinforcement Bars, Epoxy Coated			Pound	14070
Structure Excavation			Cu. Yd.	45.8
Furnishing Metal Pile Shells, 14" ϕ			Foot	2045
Driving & Filling Shells			Foot	2045
Test Pile Metal Shells			Each	1
Underwater Structure Excavation, Location 1			Each	1
Underwater Structure Excavation, Location 2			Each	1

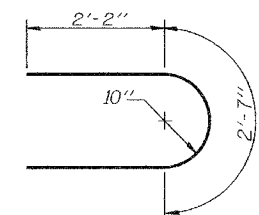
Reinforcement bars designated (E) shall be epoxy coated.
For bar splicer details see sheet 11 of 14.



BAR s5(E)



BAR u3(E)



BAR u4(E)

PIERS
F.A.P. ROUTE 669-SEC. IIBR-2
TAZEWELL COUNTY
STATION 275+77.36
STRUCTURE NO. 090-0174

DESIGNED	Phillip E. Coppernoll
CHECKED	Ray Ahanchi
DRAWN	Amber M. Seiber
CHECKED	PEC/GRA

EXAMINED	Thomas J. Demagala	May 5 2006
PASSED	Ralph E. Anderson	