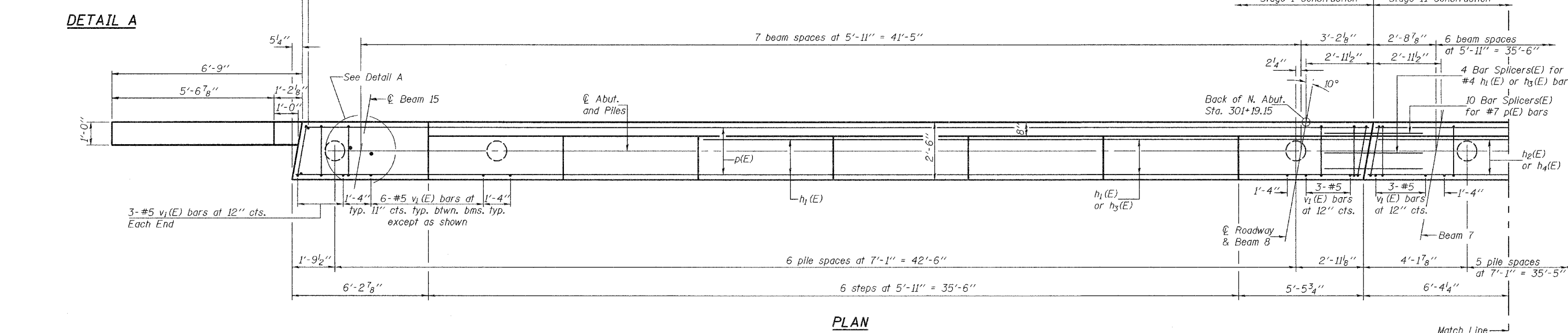
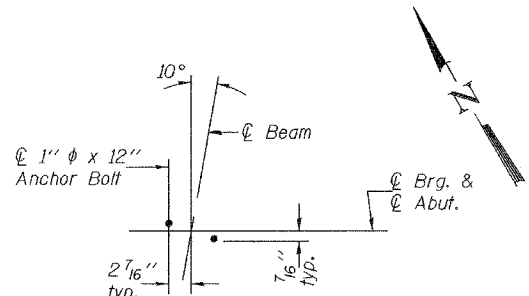
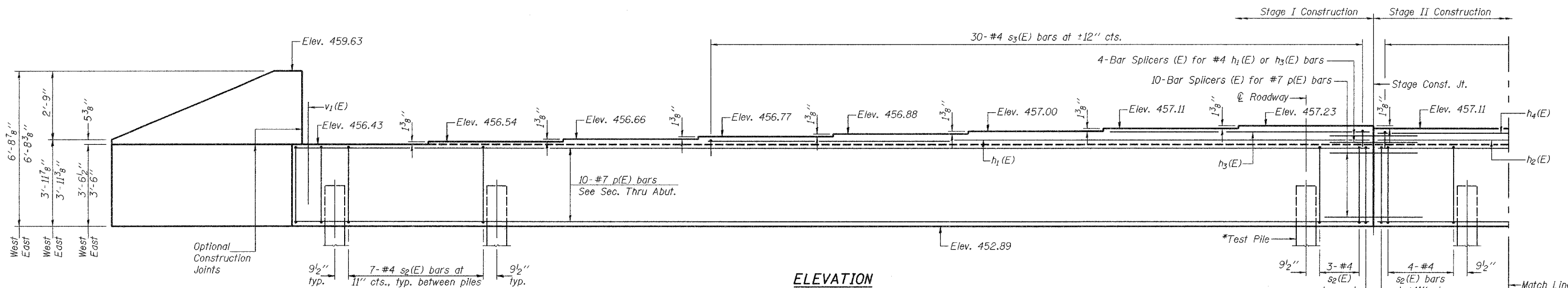


STATE OF ILLINOIS
DEPARTMENT OF TRANSPORTATION

ROUTE NO.	SECTION	COUNTY	LEVEE	SHEET NO.	SHEET NO. 16 32 SHEETS
F.A.P. 669	11BR-1	TAZEWELL	442	235	
FED. ROAD DIST. NO. 7	ILLINOIS	FED. AID PROJECT-			

Contract #88804



PILE DATA

Type: 14" φ Metal Shell
Capacity: 45 ton
Est. Length: 61' Stage I to 76' Stage II
No. Required: 12 + 1 test pile*

*Test pile to be driven at Stage I Const.

Notes:

Pour steps monolithically with cap.
Reinforcement bars designated (E) shall be epoxy coated.
See sheet 17 of 32 for Bill of Material.
See sheet 24 of 32 for Pile Details.
See sheet 17 of 32 for s₂(E) and s₃(E) bar details.
See sheet 25 of 32 for Bar Splicer details.
See sheet 15 of 32 for Anchor Bolt Installation.
Space reinforcement in cap to miss Anchor Bolts.

NORTH ABUTMENT
F.A.P. ROUTE 669 - SECTION 11BR-1
TAZEWELL COUNTY
STATION 301+87.90
STRUCTURE NO. 090-0172

DESIGNED	T.L.K.
CHECKED	A.M.J.
DRAWN	BECKY M. LEACH
CHECKED	A.M.J. & P.E.C.

May 10, 2006

EXAMINED *Thomas J. Demagallo*
ENGINEER OF BRIDGES

PASSED *Ronald E. Carlson*
ENGINEER OF BRIDGES AND STRUCTURES