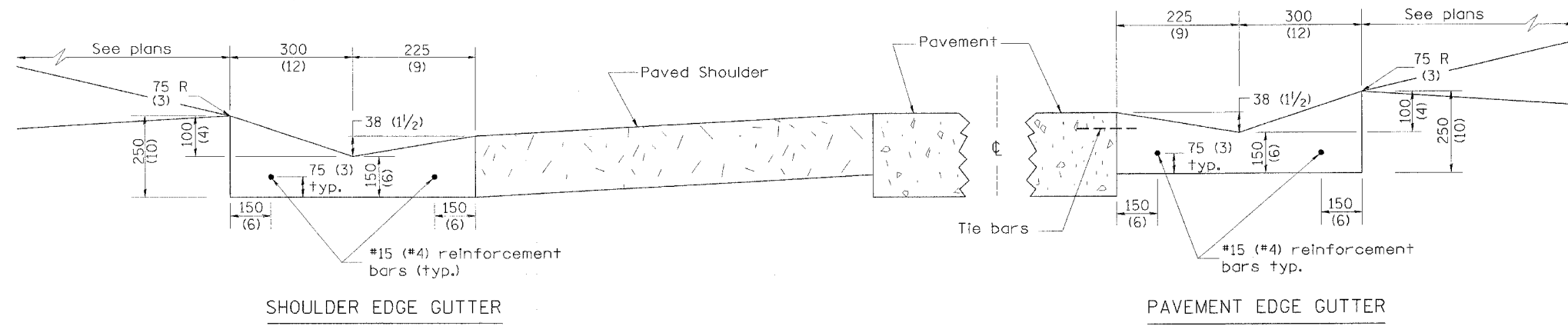


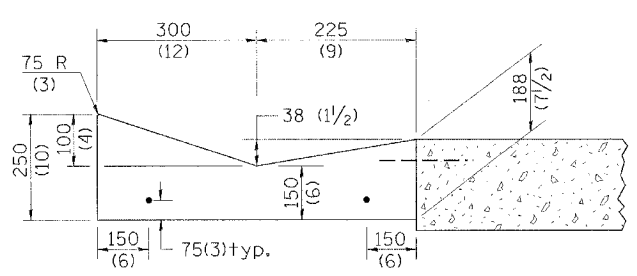
| F.A.P. RTE. | SECTION | COUNTY | TOTAL SHEETS | SHEET NO. |
|---------------------|--------------|------------------|--------------|-----------|
| 669 | 11W-3,RS-8,* | TAZEWELL | 442 | 320 |
| STA. | | TO STA. | | |
| FED. ROAD DIST. NO. | ILLINOIS | FED. AID PROJECT | | |



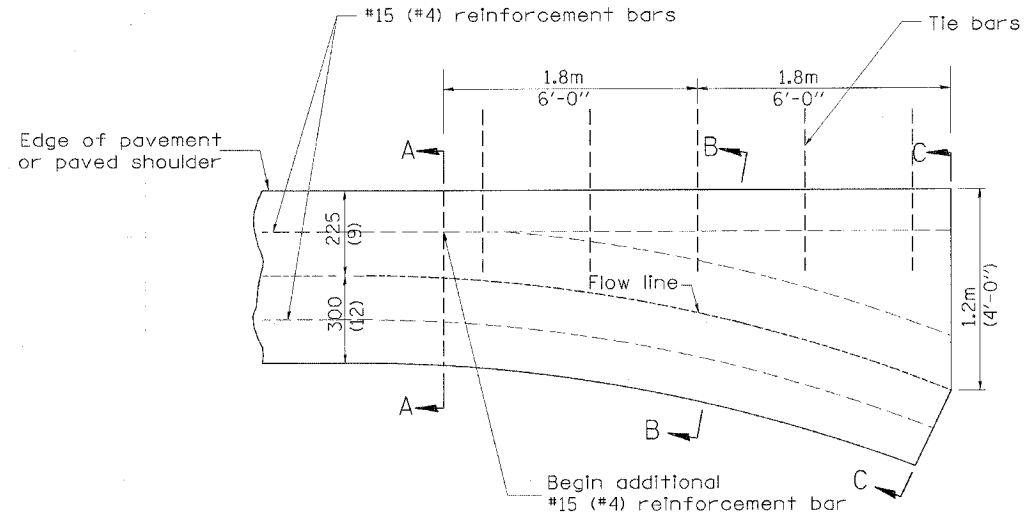
SHOULDER EDGE GUTTER

PAVEMENT EDGE GUTTER

TYPE B GUTTER (MODIFIED)



SECTION A-A

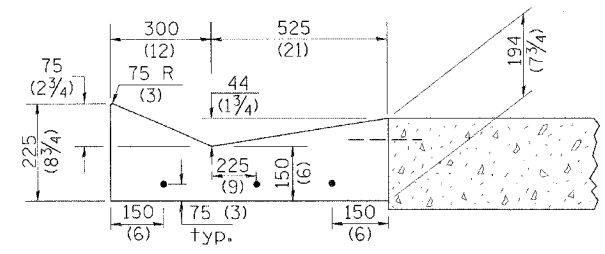


PLAN

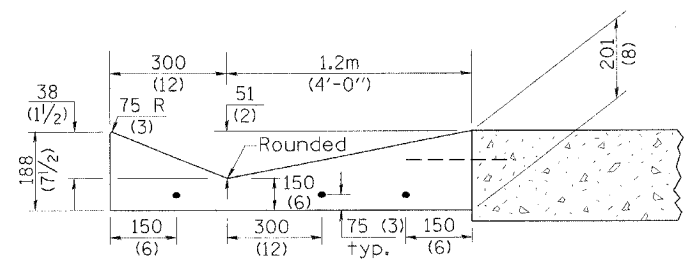
QUANTITY
Section C-C to A-A
m³ (0.73 cu. yd.) concrete.

GENERAL NOTES:

1. TYPE B GUTTER (MODIFIED) shall conform to the applicable portions of Section 606.
2. Tie bars shall be No. 20 (No. 6) at 600mm (24") centers unless otherwise shown.
3. Gutter, gutter inlets, gutter outlets, and gutter entrances shall be tied to rigid pavement in accordance with details shown on Standard 420001.
4. Joints shall be constructed in accordance with Article 606.06.
5. Welded wire fabric shall conform to Article 1006.10(c)(1), and shall not be less than 2.83 kg/m² (58 lbs/100 sq.ft.).



SECTION B-B



SECTION C-C

INLET

All dimensions are in millimeters (inches) unless otherwise noted.

ILLINOIS DEPARTMENT OF TRANSPORTATION
DISTRICT CADD STANDARD

TYPE B GUTTER (MODIFIED)
(INLET, OUTLET & ENTRANCE)

CADD STANDARD 606201-D4 SHEET 1 OF 3
SCALE: NOT DRAWN TO SCALE DRAWN BY CADD
DATE **DATE** CHECKED BY

| DATE | REVISIONS | BY |
|--------|-----------------------------|------|
| 1-1-97 | RENUM. A-1.01, NEW REVISION | T.P. |
| | BOX, ELIMINATED EXPANSION | |
| | ANCHOR TIES | |
| 3-6-98 | CORRECT DIMENSIONING | J.A. |

DESIGNER NOTES:
1. INCLUDE STATE STD. 420001.
2. INCLUDE DISTRICT SPECIAL PROVISION.

| QUANTITIES | |
|-------------|-------|
| CALC. BY: | DATE: |
| CHECKED BY: | DATE: |

QUANTITY CALCULATIONS ARE ON FILE AT THE DISTRICT 4 OFFICE; BUREAU OF PROJECT IMPLEMENTATION; DOCUMENTATION SECTION