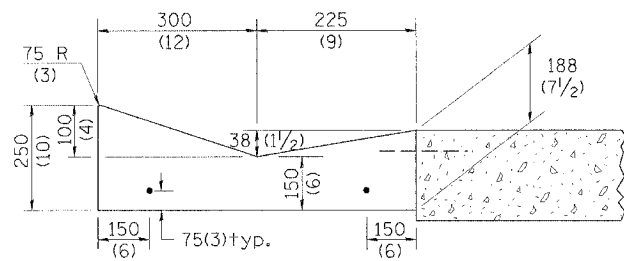
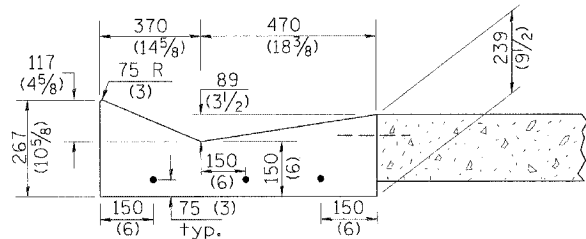


F.A.P. RTE.	SECTION	COUNTY	TOTAL SHEETS	SHEET NO.
669	11W-3,RS-8,*	TAZEWELL	442	321
STA.		TO STA.		
FED. ROAD DIST. NO.	ILLINOIS	FED. AID PROJECT		

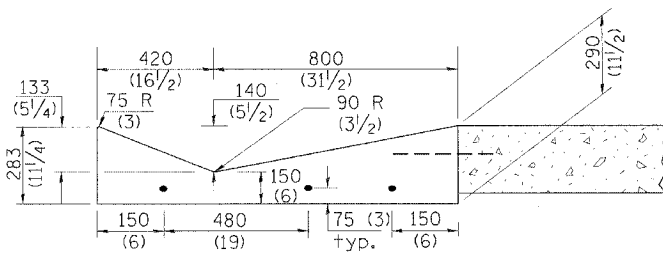
*11BR-1,11BR-2



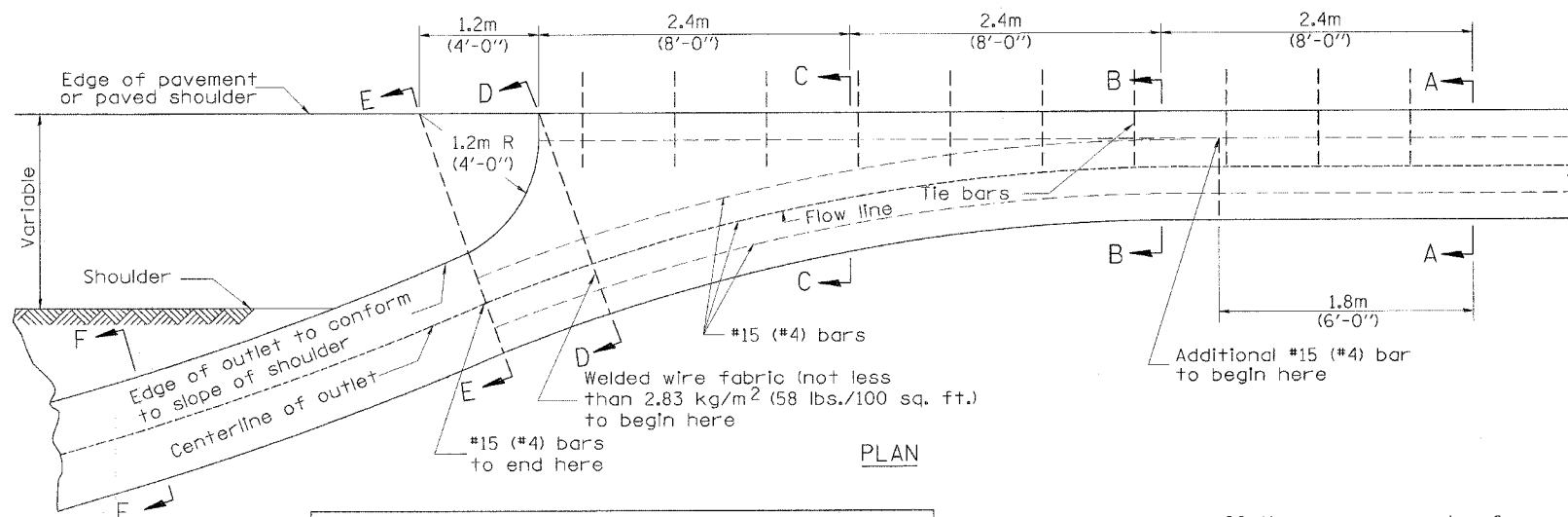
SECTION A-A



SECTION B-B



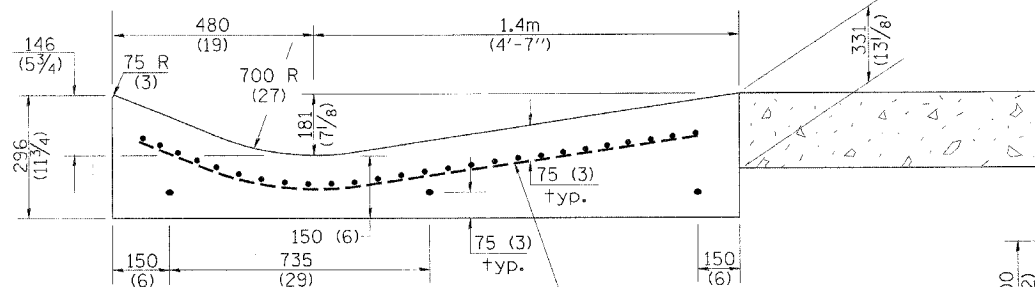
SECTION C-C



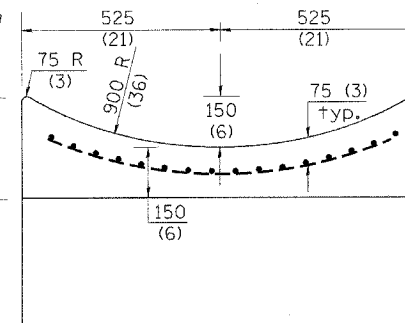
PLAN

QUANTITY
 Section A-A to E-E= m³ (2.81 cu. yd.) concrete.
 Section F-F= m³/m (0.09 cu. yd./ft.) concrete.

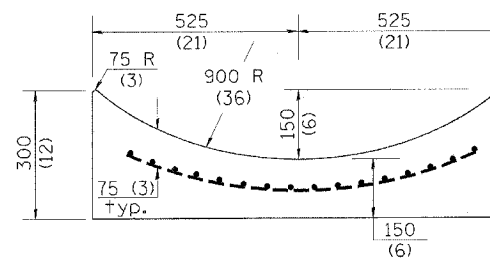
If the average grade of pavement for the distance from section A-A to section D-D exceeds 2%, this distance shall be increased 1.8m (6 ft.) for each 1% increase in grade. A quantity adjustment is required.



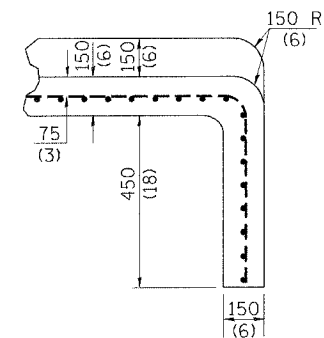
SECTION D-D



SECTION E-E



SECTION F-F



SECTIONS AT END OF OUTLET (CURTAIN WALL)

QUANTITY
 Curtain Wall
 m³ (0.1 cu. yd.) concrete.

All dimensions are in millimeters (inches) unless otherwise noted.

ILLINOIS DEPARTMENT OF TRANSPORTATION	
DISTRICT CADD STANDARD	
TYPE B GUTTER (MODIFIED)	
(INLET, OUTLET & ENTRANCE)	
CADD STANDARD 606201-D4	SHEET 2 OF 3
NOT DRAWN TO SCALE	DRAWN BY CADD
DATE: **DATE**	CHECKED BY

QUANTITIES	
CALC. BY:	DATE:
CHECKED BY:	DATE:
QUANTITY CALCULATIONS ARE ON FILE AT THE DISTRICT 4 OFFICE, BUREAU OF PROJECT IMPLEMENTATION, DOCUMENTATION SECTION	

OUTLET