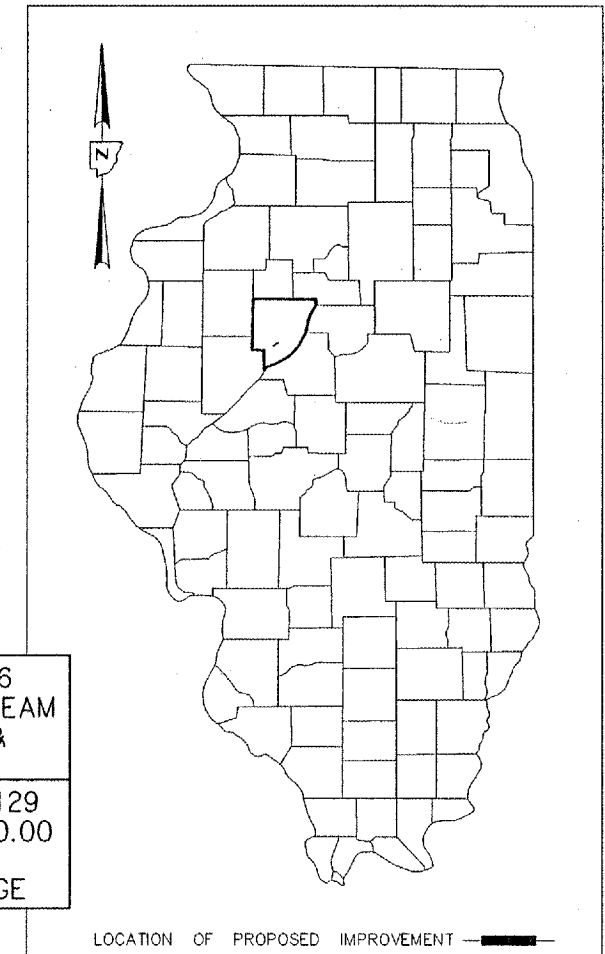


ROUTE NO.	SECTION	COUNTY	TOTAL SHEETS	SHEET NO.
1381	89-00005-00-BR	PEORIA	30	1
FED. ROAD DIST. NO.	ILLINOIS PROJECT	BR-S-1381 (105)		

CONTRACT: 89066

PLAN	0	50	100
PROFILE HOR.	0	50	100
PROFILE VERT.	0	5	10
CROSS SECTIONS	0	5	10 (VERT.)
CROSS SECTIONS	0	10	20 (HORIZ.)



STATE OF ILLINOIS
DEPARTMENT OF TRANSPORTATION
PLANS FOR
PROPOSED LOCAL AGENCY IMPROVEMENT
BRIDGE REPLACEMENT AND REHABILITATION PROGRAM

INDEX OF SHEETS

- 1 COVER SHEET
- 2 TYPICAL CROSS SECTIONS
- 3 SUMMARY OF QUANTITIES
- 4 PLAN AND PROFILE
- 5 RIGHT OF WAY STRIP MAP
- 6-18 BRIDGE PLANS
- 19-22 SOIL BORING LOGS
- 23-27 CROSS SECTIONS
- 28 PEORIA COUNTY BENCHMARK STANDARD
- 29 STORM WATER POLLUTION PREVENTION PLAN
- 30 SLOPE BENCHING DETAIL

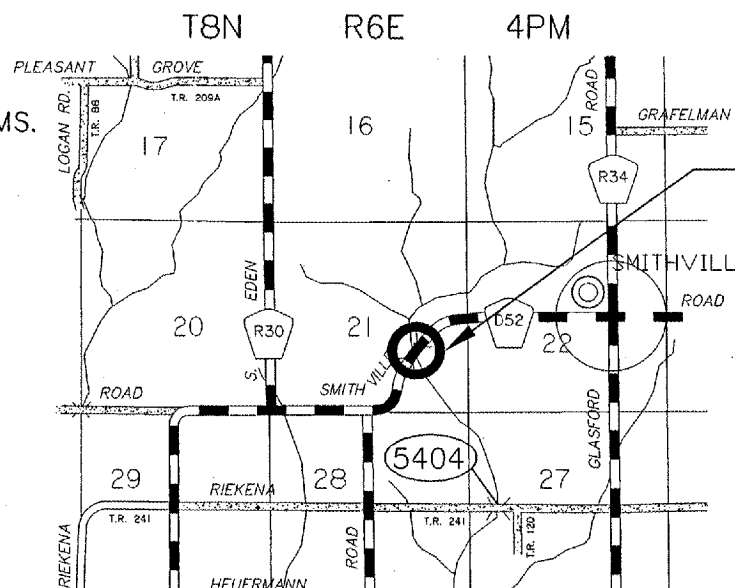
FAS ROUTE 1381
C.H. ROUTE D52 SECTION 89-00005-00-BR PEORIA COUNTY
PROJECT BR-S-1381 (105)

LIST OF STANDARDS

- 280001-02 TEMPORARY EROSION CONTROL SYSTEMS
- 285001-01 FABRIC FORMED CONCRETE REVETMENT MATS
- 630001-06 STEEL PLATE BEAM GUARDRAIL
- 630301-03 SHOULDER WIDENING FOR TY.1 (SPECIAL) GUARD. TERMS.
- 631026-02 TRAFFIC BARRIER TERMINAL, TY. 5 & 5A
- 635006-02 REFLECTOR AND TERMINAL MARKER PLACEMENT
- 635011-01 REFLECTOR MARKER AND MOUNTING DETAILS
- 665001-01 WOVEN WIRE FENCE
- 666031 RIGHT OF WAY MARKERS
- 701301-02 LANE CLOSURE, 2L, 2W, SHORT TIME OPERATIONS
- 702001-06 TRAFFIC CONTROL DEVICES
- B.L.R. 21-6 TYPICAL APPLICATION OF TRAFFIC CONTROL DEVICES FOR CONSTRUCTION ON RURAL LOCAL HIGHWAYS
- B.L.R. 22-4 TYPICAL APPLICATION OF TRAFFIC CONTROL DEVICES FOR CONSTRUCTION ON RURAL LOCAL HIGHWAYS

CADD STANDARDS

- 205031-D4 SLOPE BENCHING DETAIL



PROJECT LOCATION
BEGIN STA. 217+66.07
END STA. 223+36.11

EXISTING STRUCTURE : 072-3056
47'-3 5/8" 1 SPAN STEEL I-BEAM
25 FT. WIDE WITH CONC. DECK &
CONC. ABUTS. ON STEEL PILES.
PROPOSED STRUCTURE : 072-3129
STA. 219+33.41 TO STA. 220+60.00
126'-7" 3 SPAN PRECAST
PRESTRESSED CONC. DECK BRIDGE

LOCATION MAP (NO SCALE)

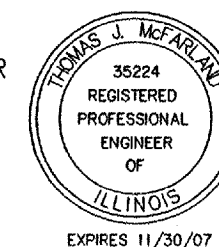
TOTAL AND NET LENGTH OF PROJECT = 570.04 FEET = 0.108 MILES
FUNCTIONAL CLASSIFICATION - MAJOR COLLECTOR, CURRENT ADT = 1400 (2002)
DESIGN SPEED - 50MPH
DESIGN GUIDELINES - 3R
VARIANCES GRANTED - NONE
COMMENTS -

QC/QA BITUMINOUS
SUPERPAVE PROJECT

J.U.L.I.E.: 1-800-892-0123
JOB NO.: C-94-219-91
CONTRACT NO.: 89066

THESE PLANS WERE PREPARED BY A FULL TIME MEMBER
OF MY STAFF UNDER MY PERSONAL SUPERVISION.

Thomas J. McFarland
PEORIA COUNTY ENGINEER



APPROVED	<i>April 17 2006</i> <i>Thomas J. McFarland</i> COUNTY ENGINEER
PASSED	<i>April 19 2006</i> <i>John Laballe</i> DISTRICT #4 ENGINEER OF LOCAL ROADS & STREETS
Releasing For Bid Based on Limited Review	<i>April 19 2006</i> <i>John Laballe</i> DEPUTY DIRECTOR OF HIGHWAYS, REGION THREE ENGINEER
STATE OF ILLINOIS DEPARTMENT OF TRANSPORTATION	