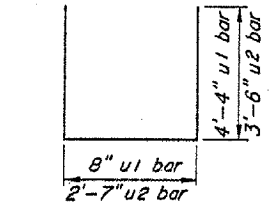
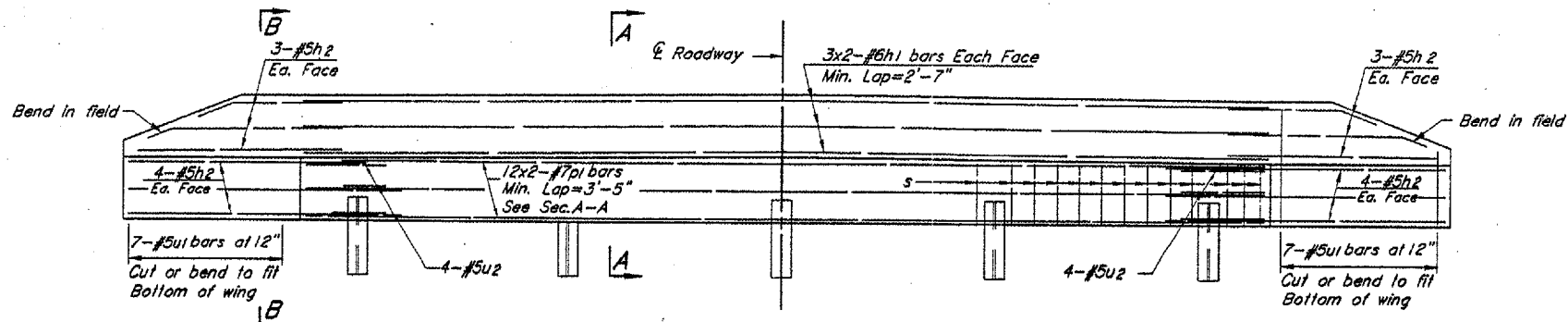
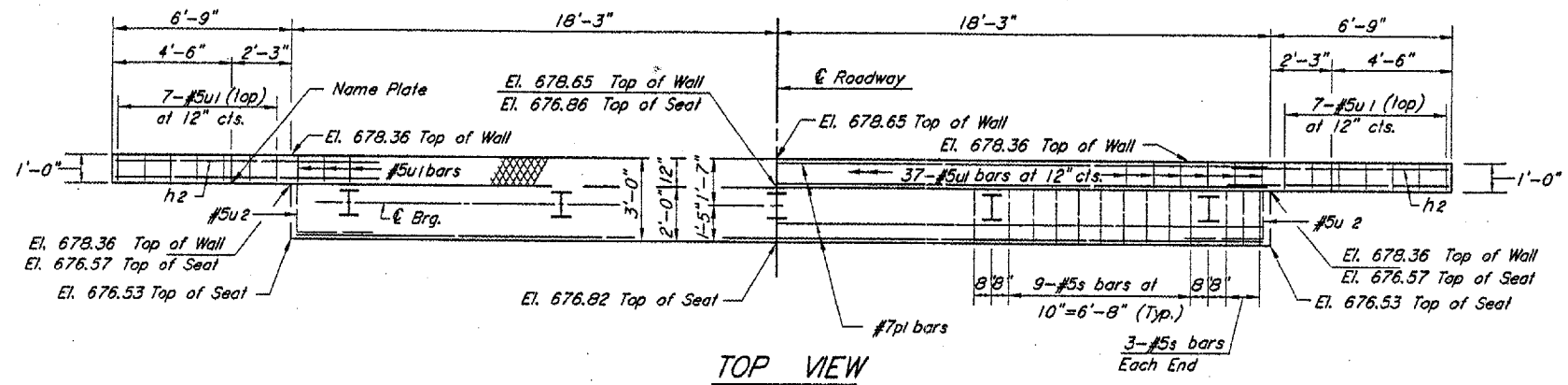
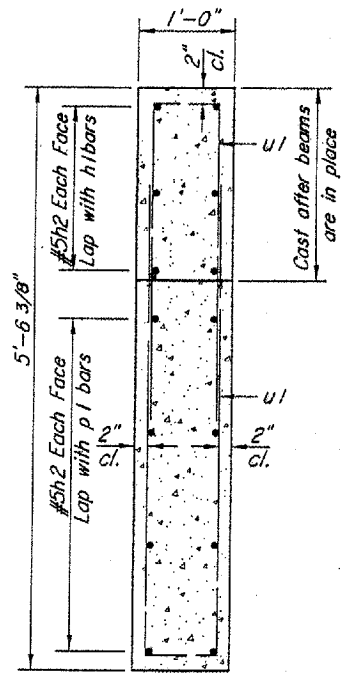
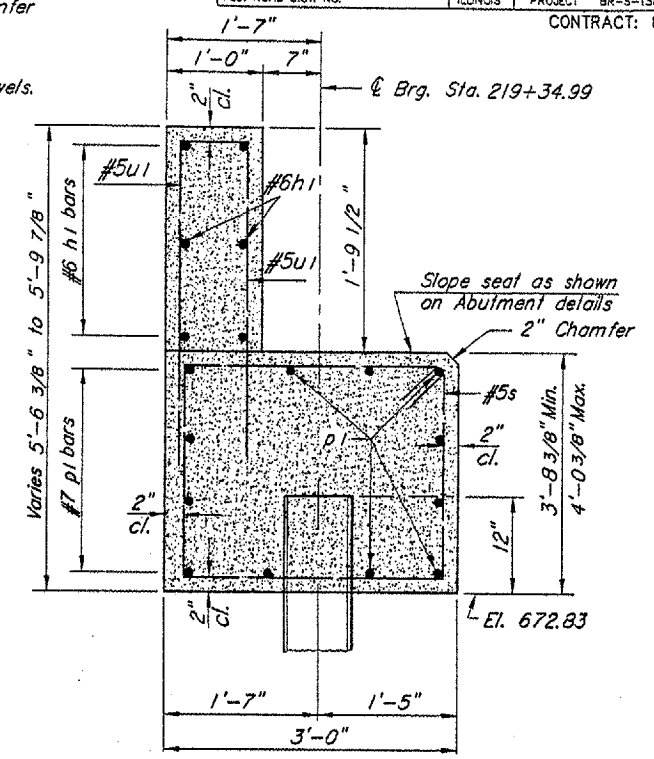
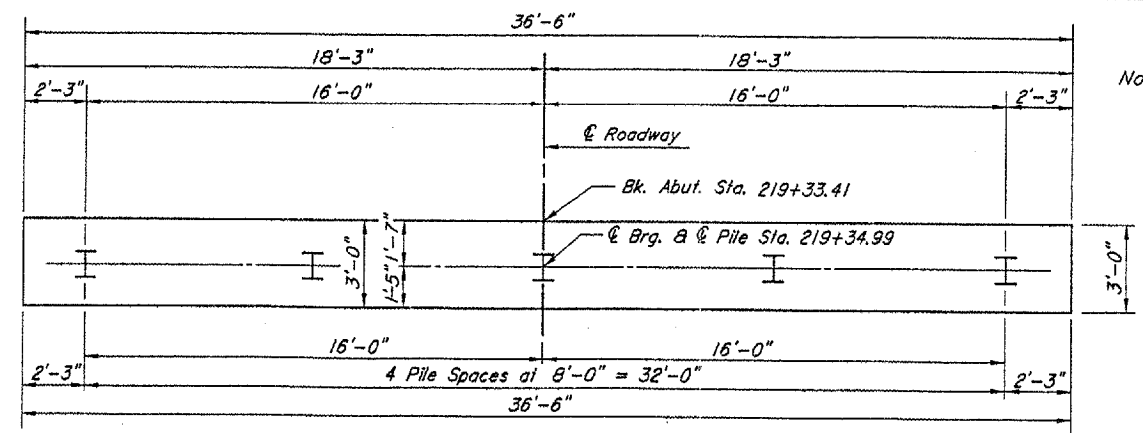


ROUTE NO.	SECTION	COUNTY	TOTAL SHEETS	SHEET NO.
1381	89-00005-00-BR	PEORIA	29	11
FED. ROAD DIST. NO.	ILLINOIS PROJECT	BR-5-1381 (105)	CONTRACT: 89066	

Notes: All edges shall have standard 3/4" chamfer except as noted.
See Standard CX-1 for Piling Details.
Space Reinf. in cap to miss anchor dowels.

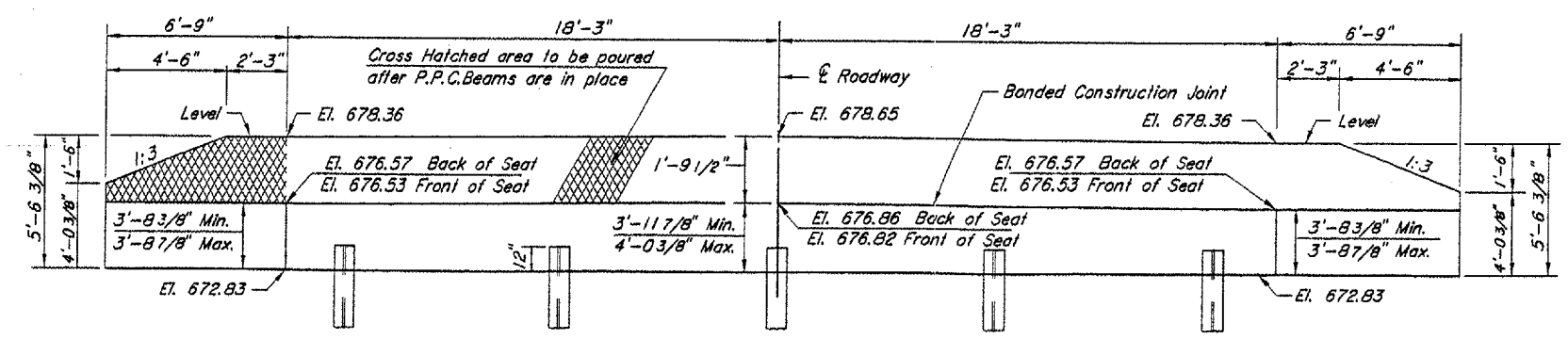
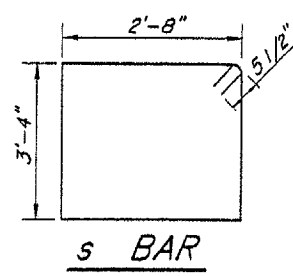


PILE DATA

Type	HP 12 x 53
Capacity	Drive to Refusal
Est. Length	32 Feet
No. Required	4+1 Test Pile
Total Length	128 Feet

BILL OF MATERIAL

BAR NO.	SIZE	LENGTH	SHAPE
h1	12 #6	19'-10"	—
h2	28 #5	10'-3"	—
p1	24 #7	20'-5"	—
s	42 #5	12'-11"	□
u1	65 #5	9'-4"	—
u2	8 #5	9'-7"	—
Concrete Structures		Cu. Yd.	20.6
Reinforcement Bars		Pound	2,940
Steel Piles HP 12 x 53		Foot	128
Test Pile HP 12 x 53		Each	1
Structure Excavation		Cu. Yd.	45



ELEVATION

*See Standard CX-1, Sheet #17, for Pile Encasement Details

ABUTMENT NO. 1
WEST ABUTMENT