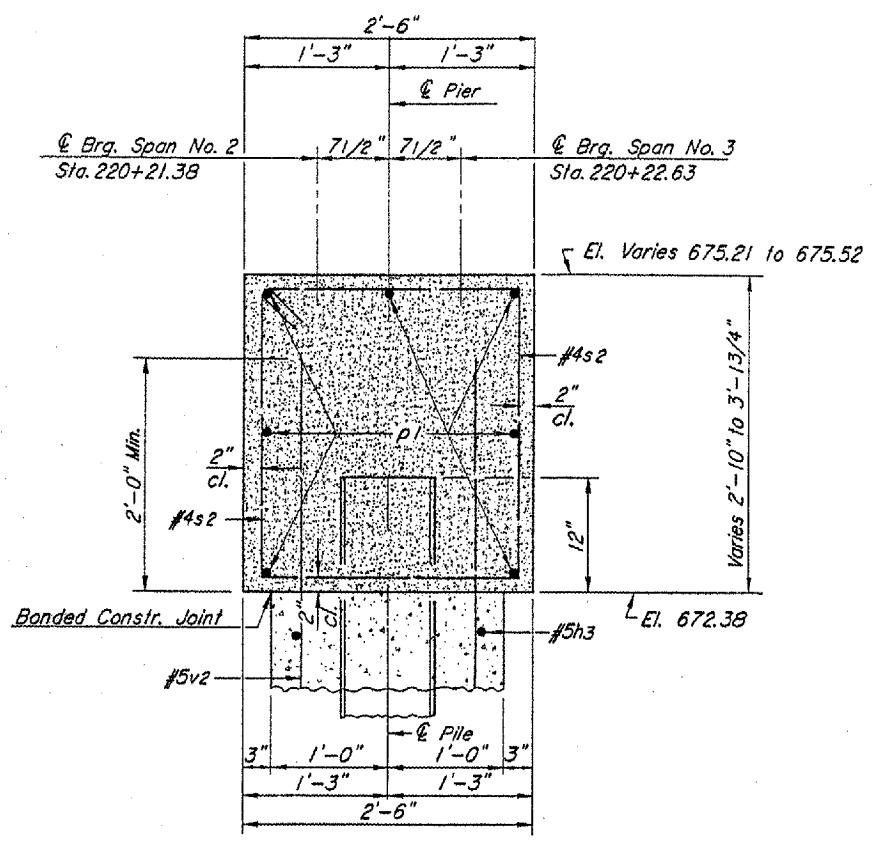
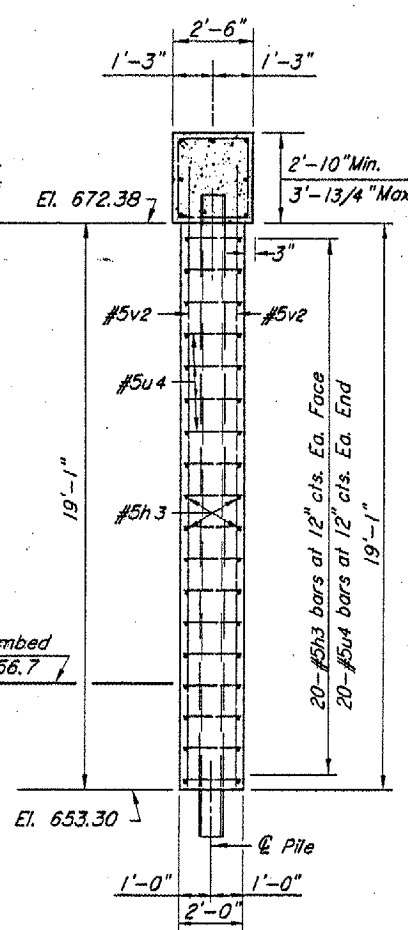
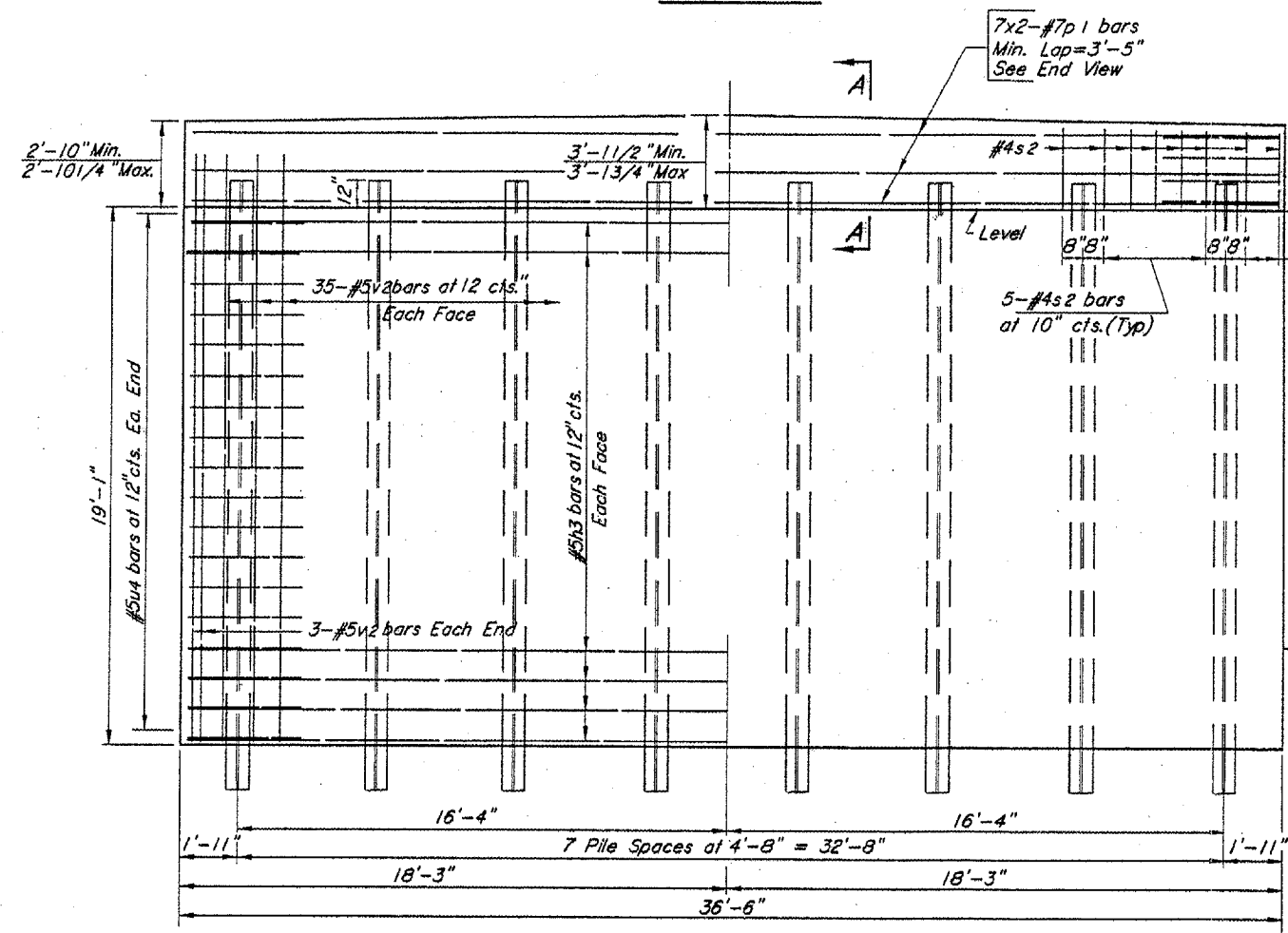
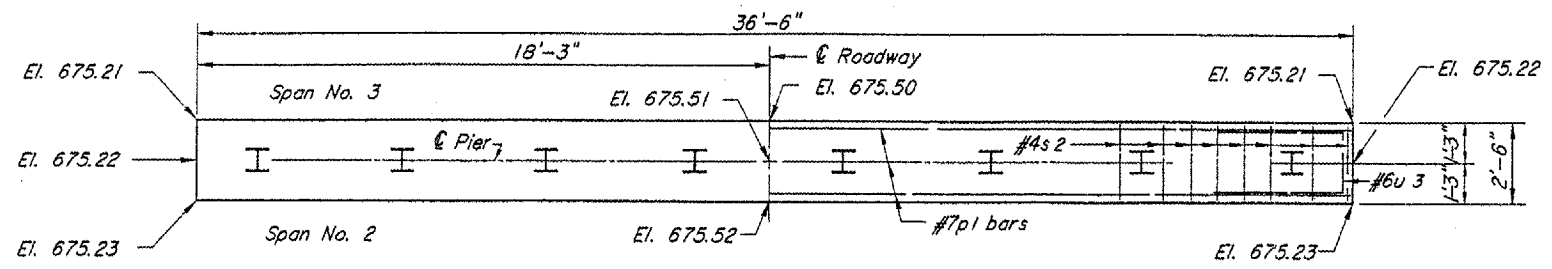


NOTE: View looking up station.



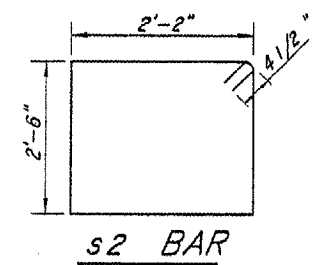
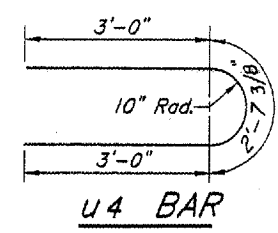
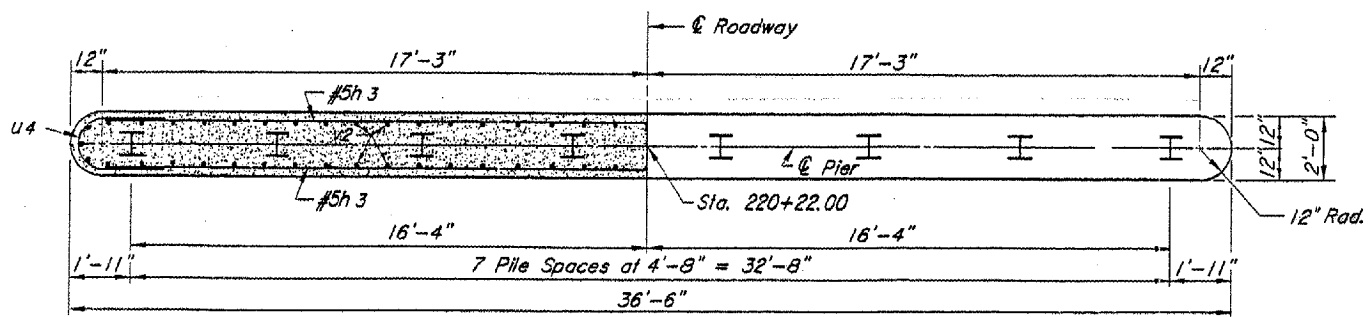
PILE DATA

Type	HP 12 x 53
Capacity	Drive to Refusal
Est. Length	32 Feet
No. Required	7+1 Test Pile
Total Length	224 Feet

BILL OF MATERIAL

BAR	NO.	SIZE	LENGTH	SHAPE
h3	40	#5	34'-6"	—
p1	14	#7	20'-5"	—
s2	39	#4	10'-1"	□
u3	8	#6	10'-1"	≡
u4	40	#5	8'-8"	≡
v2	76	#5	20'-9"	—

Concrete Structures	Cu. Yd.	61.1
Reinforcement Bars	Pound	4,410
Steel Piles HP 12 x 53	Foot	224
Test Pile HP 12 x 53	Each	1
Structure Excavation	Cu. Yd.	31



NOTE: See Standard CX-1 for HP Pile Encasement details.

NOTE: All edges shall have standard 3/4" chamfer. Space reinforcement in cap to miss anchor dowels.

Centerline of Pier No. 1 Sta. 220+22.00
Centerline of Finished Roadway El. 677.59

PIER NO. 2
EAST PIER