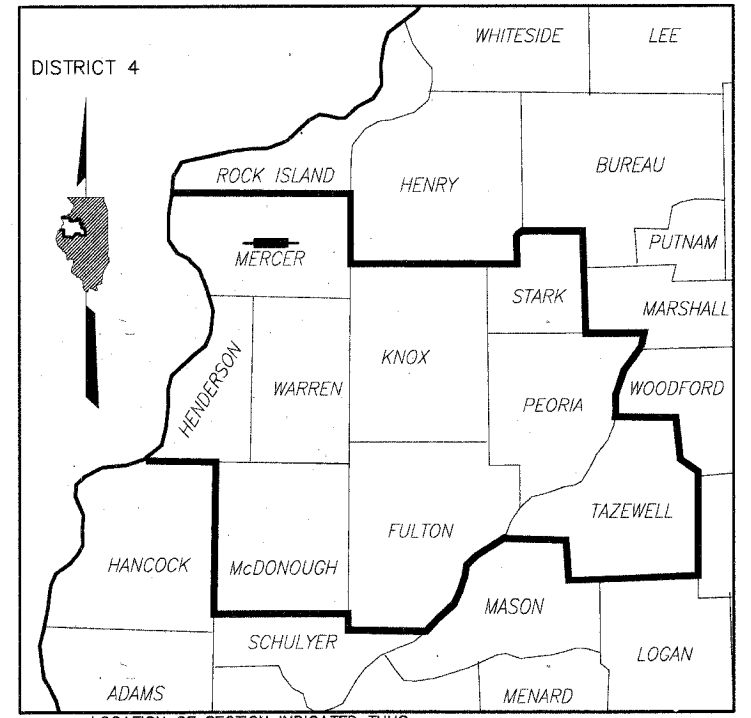


STATE OF ILLINOIS DEPARTMENT OF TRANSPORTATION PLANS FOR PROPOSED LOCAL AGENCY IMPROVEMENT HIGHWAY BRIDGE REPLACEMENT AND REHABILITATION PROGRAM

ROUTE NO.	SECTION	COUNTY	TOTAL SHEETS	SHEET NO.
132	*	MERCER	23	1
			ILLINOIS	BR-OS-131(44)
* 97-06118-00-BR			89250	

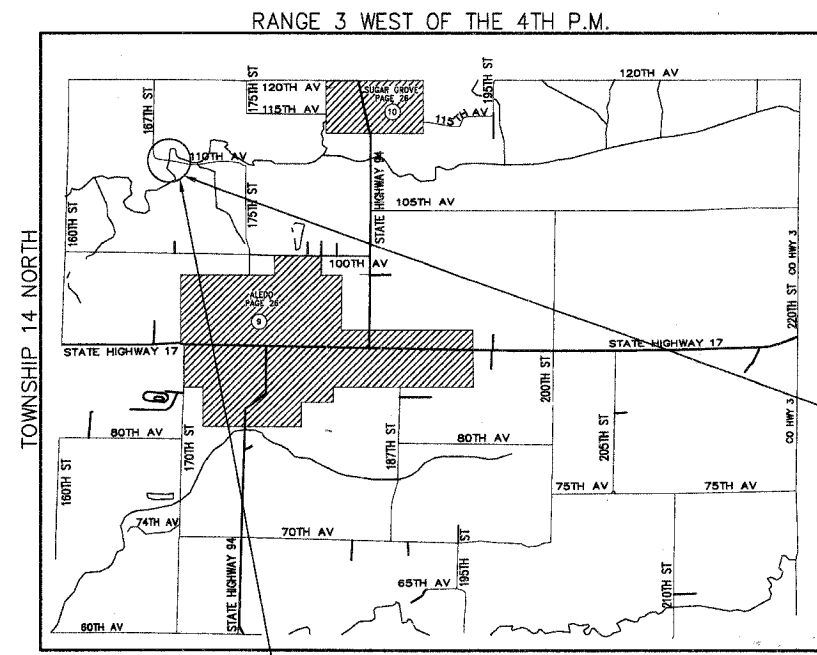


LOCATION OF SECTION INDICATED THUS:

T.R. 132 SECTION 97-06118-00-BR MERCER COUNTY PROJECT BR-OS-131(44) MERCER ROAD DISTRICT

PLAN	1 INCH = 20 FEET	
PROFILE HORIZONTAL	1 INCH = 20 FEET	
PROFILE VERTICAL	1 INCH = 5 FEET	
CROSS SECTION HORIZ.	1 INCH = 10 FEET	
CROSS SECTION VERT.	1 INCH = 5 FEET	

INDEX OF SHEETS	
SHEET NO.	DESCRIPTION
1	COVER SHEET
2	TYPICAL SECTIONS AND DETAILS
3	GENERAL NOTES, SUMMARY AND SCHEDULE OF QUANTITIES
4	GENERAL SITE PLAN
5-7	PLAN AND PROFILE
8-11	ROADWAY CROSS SECTIONS
12-13	CHANNEL CROSS SECTIONS
14	GENERAL BRIDGE PLAN AND ELEVATION
15	DECK BEAM DETAILS
16	ABUTMENT DETAILS
17	SOLID WALL PIER DETAILS
18	STEEL RAILING DETAILS, TYPE S-1
19	12' x 7' R.C. BOX CULVERT
20	OVERFLOW CHANNEL CROSS SECTIONS
21	SOIL BORING LOGS
22	SOIL BORING LOGS
23	EROSION CONTROL PLAN



LOCATION OF THE PROPOSED IMPROVEMENT
PROPOSED IMPROVEMENT BEGINS STA. 3+25
PROPOSED IMPROVEMENT ENDS STA. 15+75

EXISTING STRUCTURES
6-SPAN STRUCTURE WITH A 70 FOOT MAIN SPAN PONY TRUSS ON STEEL CAISSONS. APPROACH SPANS ON CONCRETE PIERS AND ABUTMENTS. TIMBER DECK WITH WOOD RUNNERS (SN 066-4804)

A OVERFLOW STRUCTURE WITH 4-30 FOOT SPANS ON CONCRETE PIERS AND ABUTMENTS, WITH A CONCRETE DECK (SN 066-4805)

PROPOSED STRUCTURE NO. 066-4817
A TWO SPAN PRECAST, PRESTRESSED CONCRETE DECK BEAM BRIDGE, ON PILE BENT ABUTMENTS AND PIERS, AT STA. 7+74.00. THE PROPOSED STRUCTURE IS LOCATED APPROXIMATELY 40' DOWNSTREAM FROM THE EXISTING STRUCTURE.

PROPOSED STRUCTURE (OVERFLOW CHANNEL)
A 12'-0" x 7'-0" R.C. BOX CULVERT WITH A LENGTH OF 62'-3" AND HORIZONTAL WINGWALLS AT STA. 9+54.00.

LOCATION MAP

TOTAL LENGTH OF PROJECT = 1250.00 FT.
NET LENGTH OF PROJECT = 1250.00 FT. (0.237 MI.)

I HEREBY CERTIFY THAT THIS ENGINEERING DOCUMENT WAS PREPARED BY ME OR UNDER MY DIRECT SUPERVISION AND THAT I AM A DULY LICENSED PROFESSIONAL ENGINEER UNDER THE LAWS OF THE STATE OF ILLINOIS.

John B. Fellman 4-11-2006
JOHN B. FELLMAN DATE
LICENSE EXPIRES 11-30-2007



MSA JOB #: A97X007

- LIST OF STANDARDS
- STANDARD 515001-02 NAME PLATE
 - STANDARD 701006-02 OFF - ROAD OPERATIONS, 2 - LANE, 2 - WAY, 15' TO 24" AWAY FROM PAVEMENT EDGE
 - STANDARD 701301-02 LANE CLOSURE, 2 - LANE, 2 - WAY, SHORT TIME OPERATIONS,
 - STANDARD 702001-06 TRAFFIC CONTROL DEVICES
 - STANDARD 280001-02 TEMPORARY EROSION CONTROL SYSTEMS
 - STANDARD BLR 21-6 TYPICAL APPLICATION OF TRAFFIC CONTROL DEVICES FOR CONSTRUCTION ON RURAL LOCAL HIGHWAYS

JOB NO. C-94-243-99
CONTRACT NO. 89250

DESIGN DESIGNATION

HIGHWAY CLASS: LOCAL ROAD
DESIGN SPEED: 30 M.P.H.
ADT = 100
DESIGN GUIDELINES: RURAL

COMMITMENTS: NONE

VARIANCES GRANTED: FOR SUPERELEVATION RATE, RUNOFF LENGTH, AND TRANSITION DISTRIBUTION

WARNING



CALL BEFORE YOU DIG

APPROVED	<i>April 7</i> , 20 <i>06</i>
	<i>Stan J. Raymond</i> COUNTY ENGINEER
APPROVED	<i>April 7</i> , 20 <i>06</i>
	<i>Donna J. Bradford</i> ROAD COMMISSIONER
PASSED	<i>April 14</i> , 20 <i>06</i>
	<i>John B. Fellman</i> DISTRICT FOUR ENGINEER OF LOCAL ROADS & STREETS
Releasing For Bid Based on Limited Review	<i>April 14</i> , 20 <i>06</i>
	<i>John E. Corman</i> DEPUTY DIRECTOR OF HIGHWAYS, REGION THREE ENGINEER



STATE OF ILLINOIS
DEPARTMENT OF TRANSPORTATION