

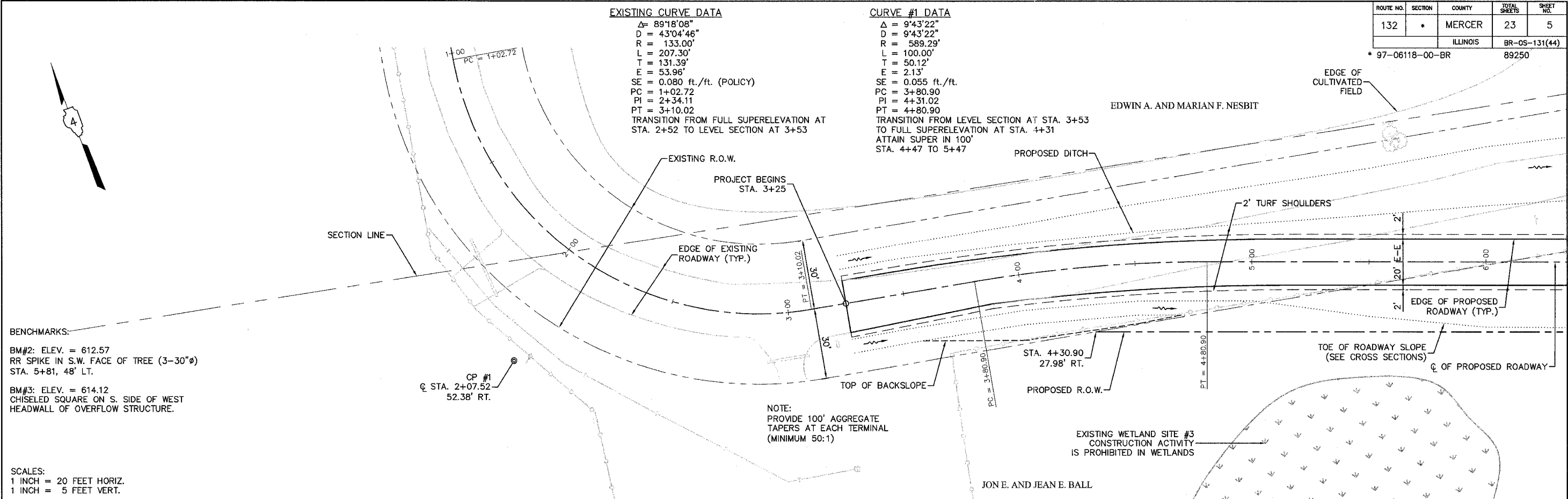
ROUTE NO.	SECTION	COUNTY	TOTAL SHEETS	SHEET NO.
132	*	MERCER	23	5
ILLINOIS			BR-05-131(44)	
* 97-06118-00-BR			89250	

EXISTING CURVE DATA

$\Delta = 89^{\circ}18'08''$
 $D = 43^{\circ}04'46''$
 $R = 133.00'$
 $L = 207.30'$
 $T = 131.39'$
 $E = 53.96'$
 $SE = 0.080 \text{ ft./ft. (POLICY)}$
 $PC = 1+02.72$
 $PI = 2+34.11$
 $PT = 3+10.02$
 TRANSITION FROM FULL SUPERELEVATION AT STA. 2+52 TO LEVEL SECTION AT 3+53

CURVE #1 DATA

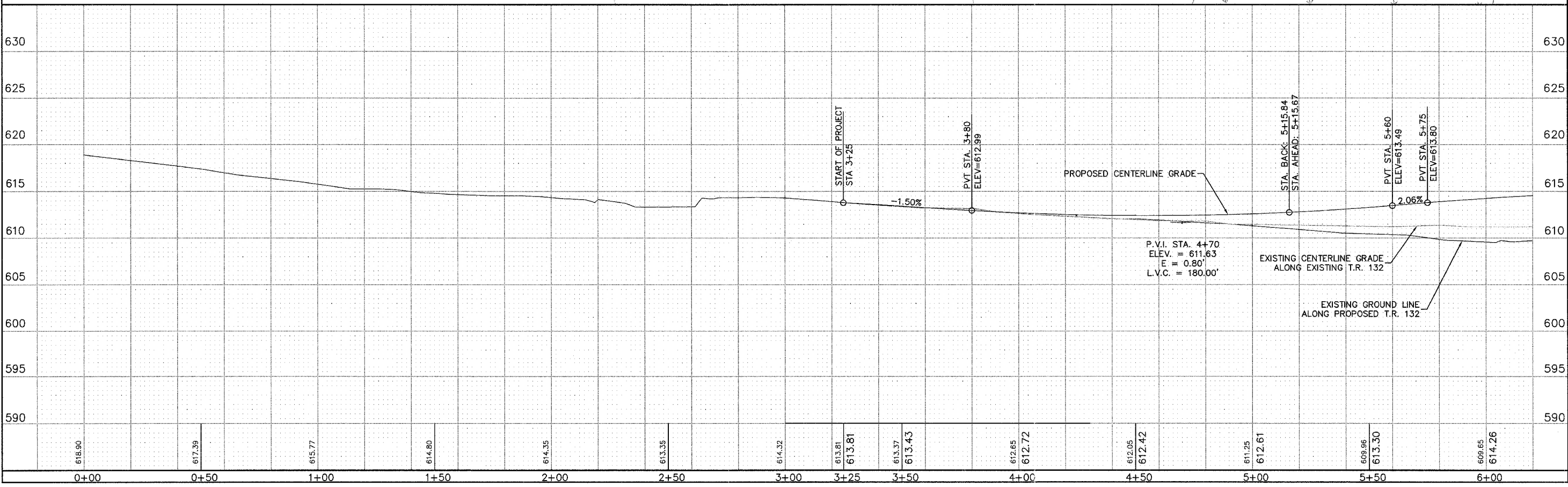
$\Delta = 9^{\circ}43'22''$
 $D = 9^{\circ}43'22''$
 $R = 589.29'$
 $L = 100.00'$
 $T = 50.12'$
 $E = 2.13'$
 $SE = 0.055 \text{ ft./ft.}$
 $PC = 3+80.90$
 $PI = 4+31.02$
 $PT = 4+80.90$
 TRANSITION FROM LEVEL SECTION AT STA. 3+53 TO FULL SUPERELEVATION AT STA. 4+31
 ATTAIN SUPER IN 100'
 STA. 4+47 TO 5+47



BENCHMARKS:
BM#2: ELEV. = 612.57
 RR SPIKE IN S.W. FACE OF TREE (3-30"Ø)
 STA. 5+81, 48' LT.
BM#3: ELEV. = 614.12
 CHISELED SQUARE ON S. SIDE OF WEST
 HEADWALL OF OVERFLOW STRUCTURE.

SCALES:
 1 INCH = 20 FEET HORIZ.
 1 INCH = 5 FEET VERT.

NOTE:
 PROVIDE 100' AGGREGATE
 TAPERS AT EACH TERMINAL
 (MINIMUM 50:1)



PLAN & PROFILE STA. 1+00 TO 6+00