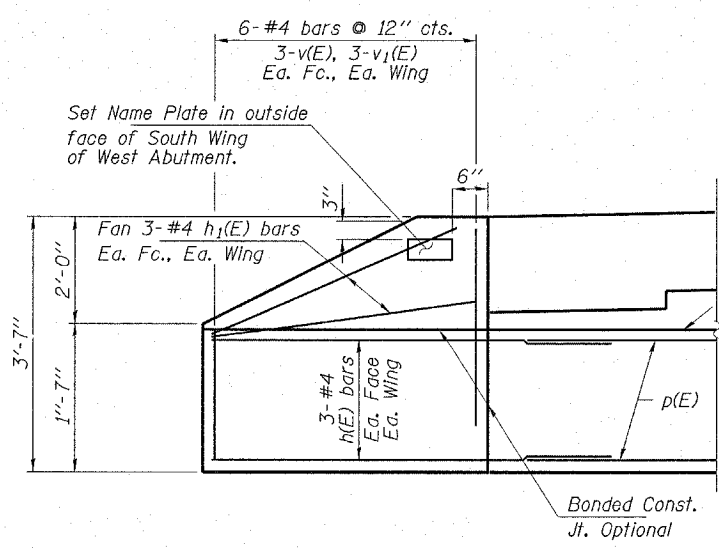
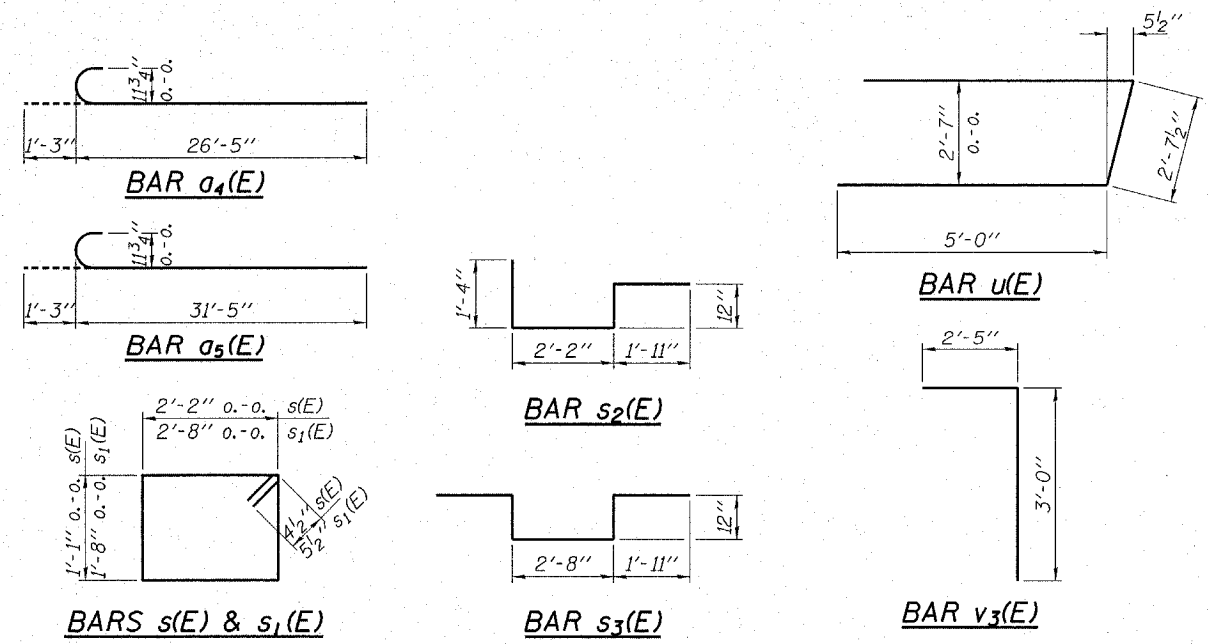


BILL OF MATERIAL

BAR	NO.	SIZE	LENGTH	SHAPE
a(E)	35	#6	13'-6"	—
a1(E)	35	#6	20'-3"	—
a2(E)	35	#9	26'-3"	—
a3(E)	34	#9	15'-0"	—
a4(E)	35	#9	27'-8"	—
a5(E)	35	#9	32'-8"	—
a6(E)	34	#9	19'-11"	—
a7(E)	34	#9	26'-5"	—
b(E)	114	#6	33'-8"	—
h(E)	24	#4	6'-6"	—
h1(E)	24	#4	4'-9"	—
p(E)	20	#8	34'-2"	—
p1(E)	10	#7	34'-2"	—
s(E)	114	#4	7'-3"	□
s1(E)	109	#5	9'-7"	□
s2(E)	68	#5	6'-5"	—
s3(E)	34	#5	8'-6"	—
u(E)	18	#6	12'-8"	—
v(E)	24	#4	2'-10"	—
v1(E)	24	#4	1'-4"	—
v2(E)	204	#5	3'-0"	—
v3(E)	68	#5	5'-5"	—
Protective Coat		Sq. Yd.	442	
Concrete Structures		Cu. Yd.	24.6	
Concrete Superstructure		Cu. Yd.	86.1	
Bridge Deck Grooving		Sq. Yd.	442	
Reinforcement Bars, Epoxy Coated		Pound	31,470	
Concrete Piles		Foot	600	
Test Pile Concrete		Each	1	
Concrete Encasement		Cu. Yd.	5.2	
Name Plates		Each	1	
Bar Splicers		Each	70	



Note: For edge beam details see Detail A on sheet 15.

MIN. BAR LAPS
#6 - 1'-7"

HLR

Rice, Berry and Associates
A Division of Hampton, Lenzini and Renwick, Inc.
Civil & Structural Engineers
3085 Stevenson Drive
Suite 201
Springfield, Illinois 62703
217-546-3400

P.O. Box 1036
DuQuoin, Illinois 62832
618-790-4637

Account Number 12-91-0014-1
Date: 03/22/06
DESIGNED: S.M.S. CHECKED: S.W.M. DRAWN: D.B.

SUPERSTRUCTURE
C.H. 7 / TOWNLINE ROAD
SECTION 03-00016-00-BR
TAZEWELL COUNTY
STR. NO. 090-3237 STATION 10+75