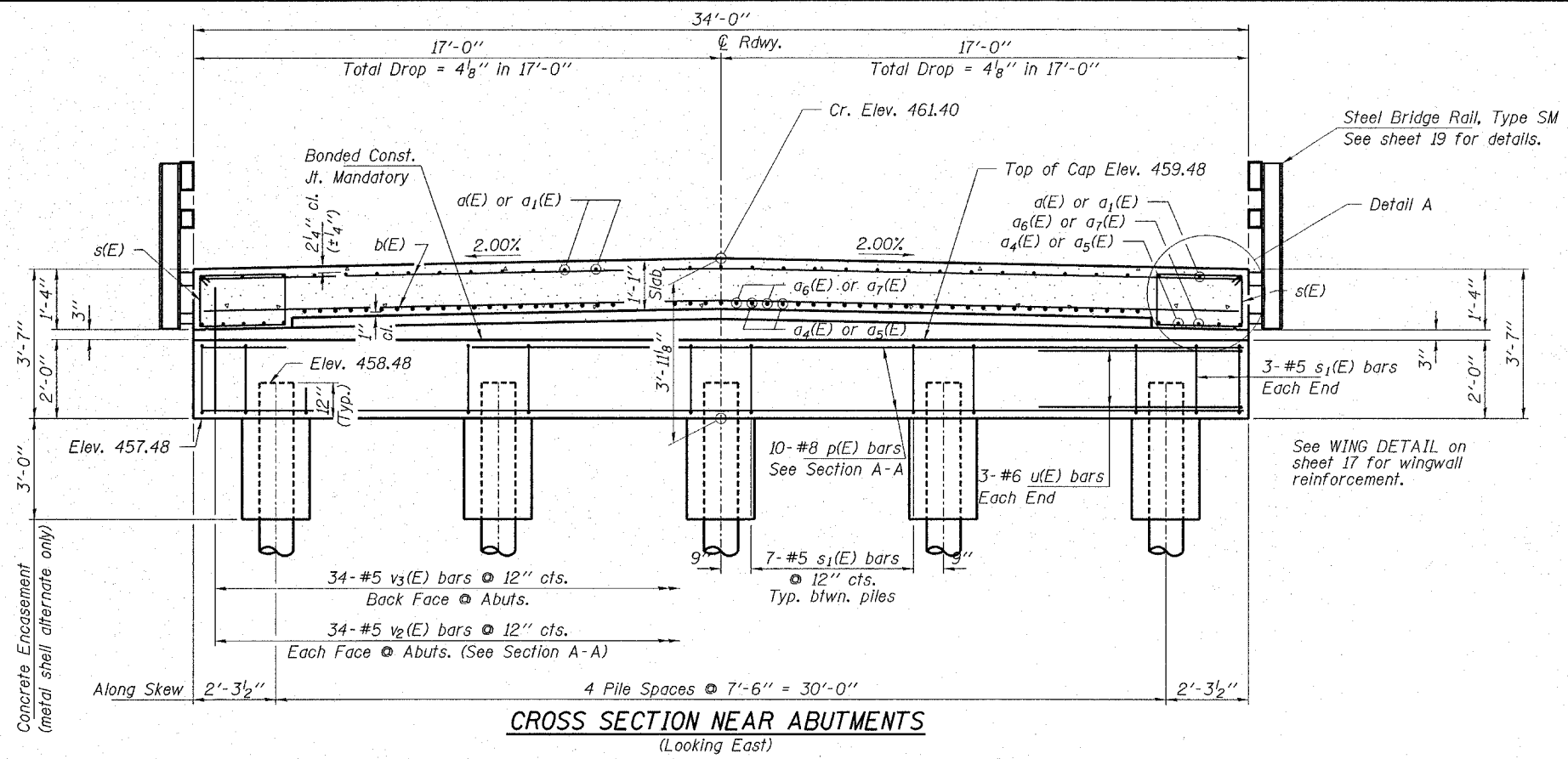
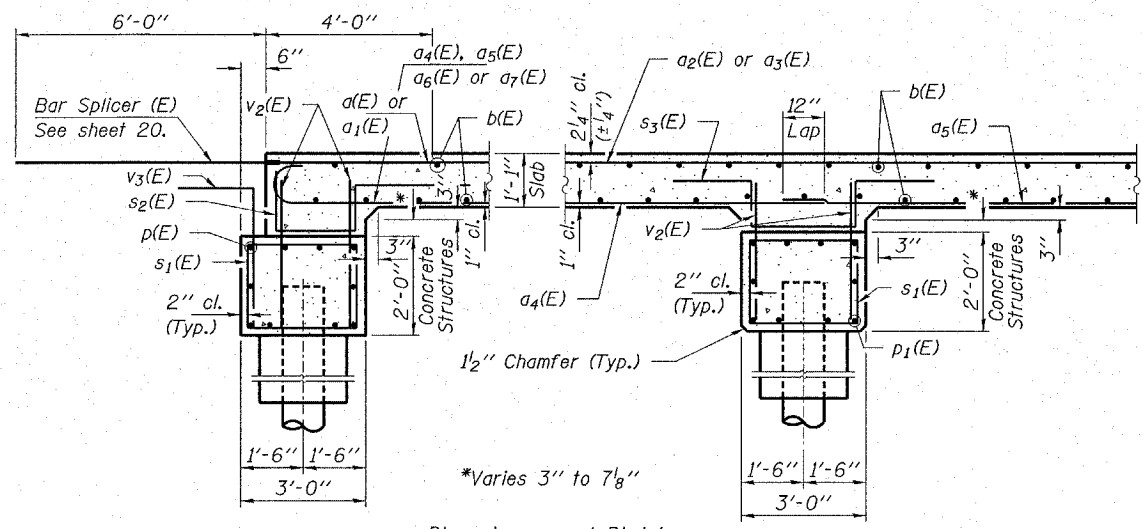


ROUTE NO.	SECTION	COUNTY	TOTAL SHEETS
C.H. 7	03-00016-00-BR	TAZEWELL	23
FED. ROAD DIST. NO.	ILLINOIS	FED. AID PROJECT	

CONTRACT NO. 89296

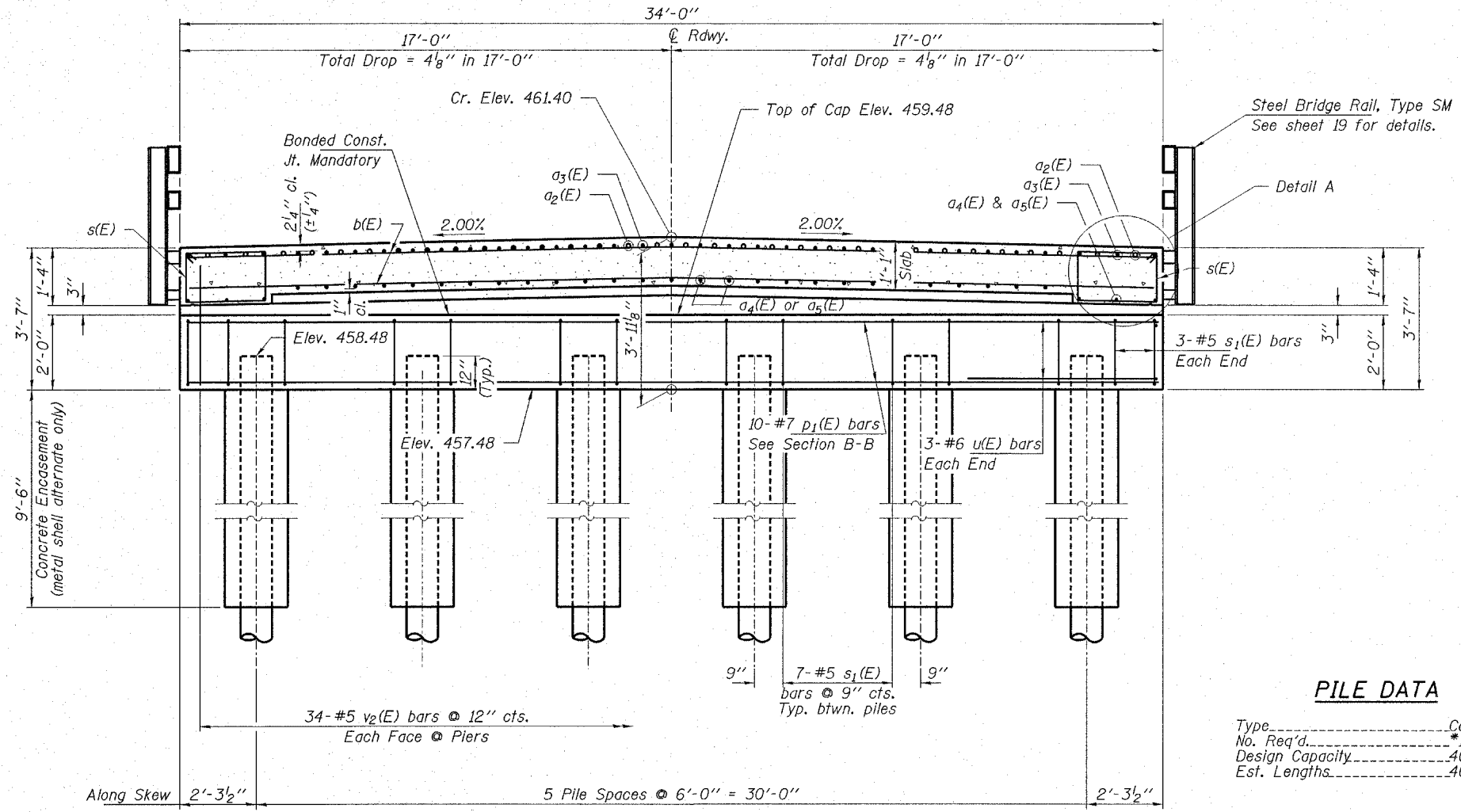


CROSS SECTION NEAR ABUTMENTS
(Looking East)



SECTION A-A **SECTION B-B**

Note: Project v2(E) and v3(E) bars 1'-0" above bonded construction joint.

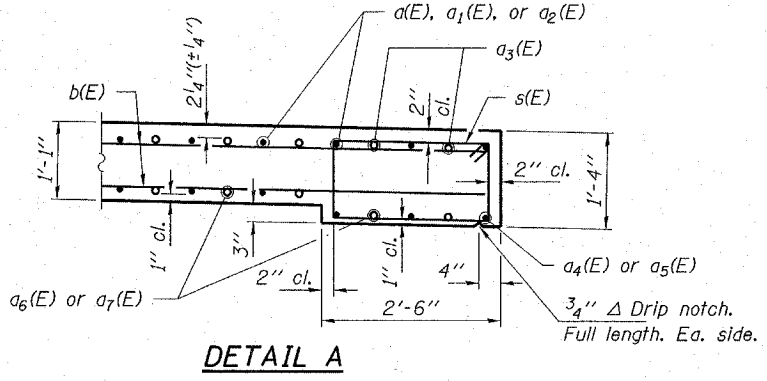


CROSS SECTION AT PIER
(Looking East)

PILE DATA

Type.....Concrete
No. Req'd.....*16
Design Capacity.....40 Tons/Pile
Est. Lengths.....40 Ft/Pile

* Includes one test pile to be driven in a permanent location at the Pier.



DETAIL A

See sheet 21 For Pile Alternates and Encasement Details.

HLR
Rice, Berry and Associates
A Division of Hampton, Lenzini and Renwick, Inc.
Civil & Structural Engineers
3085 Stevenson Drive
Suite 201
Springfield, Illinois 62703
217-546-3400
P.O. Box 1036
DuQuoin, Illinois 62832
618-790-4637
Account Number 12-91-0014-1
Date: 03/22/06
DESIGNED: S.M.S. CHECKED: S.W.M. DRAWN: D.B.

SUPERSTRUCTURE
C.H. 7 / TOWNLINE ROAD
SECTION 03-00016-00-BR
TAZEWELL COUNTY
STR. NO. 090-3237 STATION 10+75