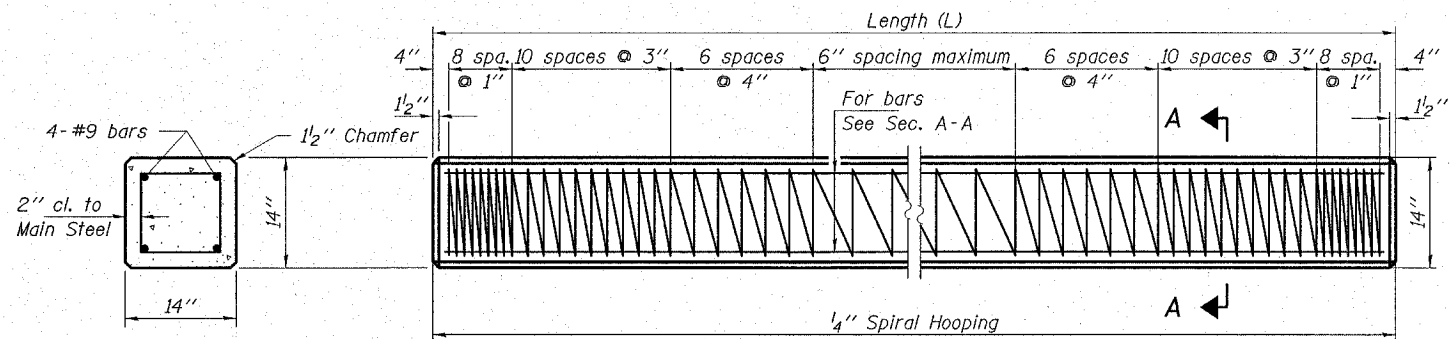
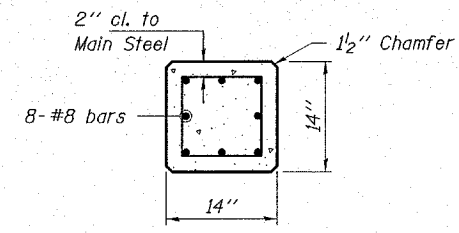


ROUTE NO.	SECTION	COUNTY	TOTAL SHEETS	SHEET NO.
C.H. 7	03-00016-00-BR	TAZEWELL	23	2
FED. ROAD DIST. NO.	ILLINOIS	FED. AID PROJECT-		

CONTRACT NO. 89296



**SECTION A-A
FOR PILES UNDER
45' LONG**

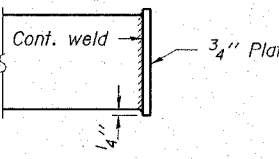
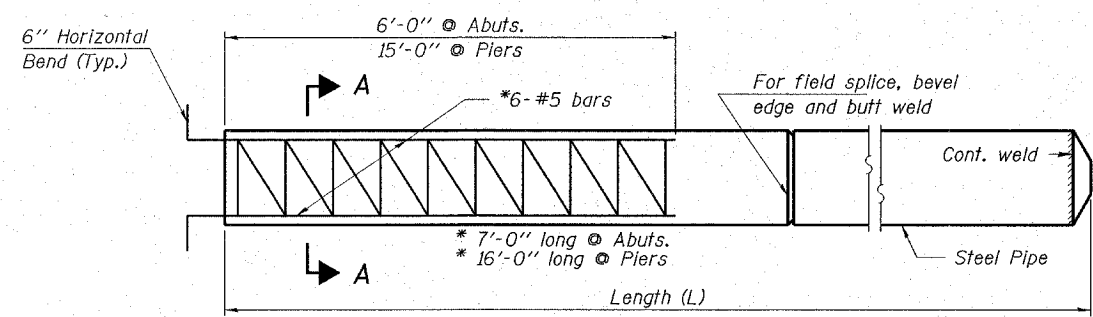


**SECTION A-A
FOR PILES 45'
OR MORE**

Handling: For Pile lengths up to 45' use two slings placed at a distance of 0.21L* from each end. For Piles longer than 45', use three slings placed at a distance of 0.12L* from each end and at mid point of pile.

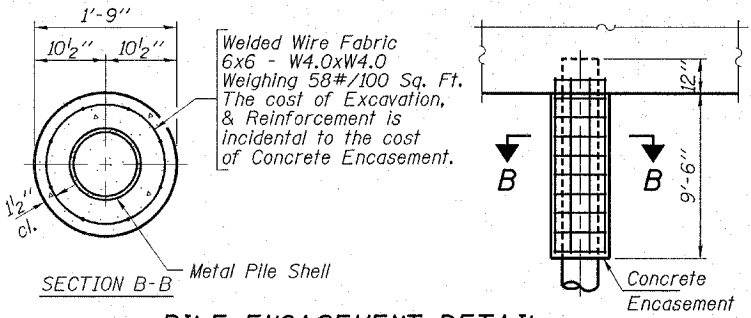
*L= Overall length of pile to be handled.

DETAIL OF PRECAST CONCRETE PILES

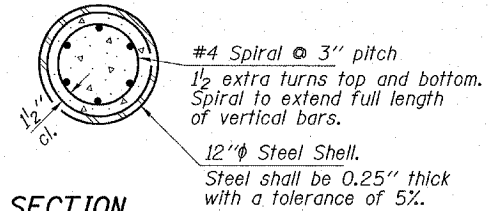


**OPTIONAL
FLAT END**

Note: Driving and bearing ends of pipe shall be cut square.



PILE ENCASEMENT DETAIL



SECTION
The cost of Reinforcement in piling is incidental to the cost of concrete piles.

DETAIL OF CAST IN PLACE CONCRETE PILES

HLR
Rice, Berry and Associates
A Division of Hampton, Lenzini and Renwick, Inc.
Civil & Structural Engineers
3085 Stevenson Drive
Suite 201
Springfield, Illinois 62703
217-546-3400
P.O. Box 1036
DuQuoin, Illinois 62832
618-790-4637
Account Number 12-91-0014-1
Date: 03/22/06
DESIGNED: S.M.S. CHECKED: S.W.M. DRAWN: D.B.

PILING DETAILS
C.H. 7 / TOWNLIN ROAD
SECTION 03-00016-00-BR
TAZEWELL COUNTY
STR. NO. 090-3237 STATION 10+75