

INDEX OF SHEETS

- 1. COVER SHEET
- 2. SUMMARY OF QUANTITIES, ROADWAY DETAILS
- 3. PLAN & PROFILE
- 4. GENERAL PLAN & ELEVATION
- 5. DETAIL SHEET
- 6. CROSS SECTIONS
- 7. BORING LOG

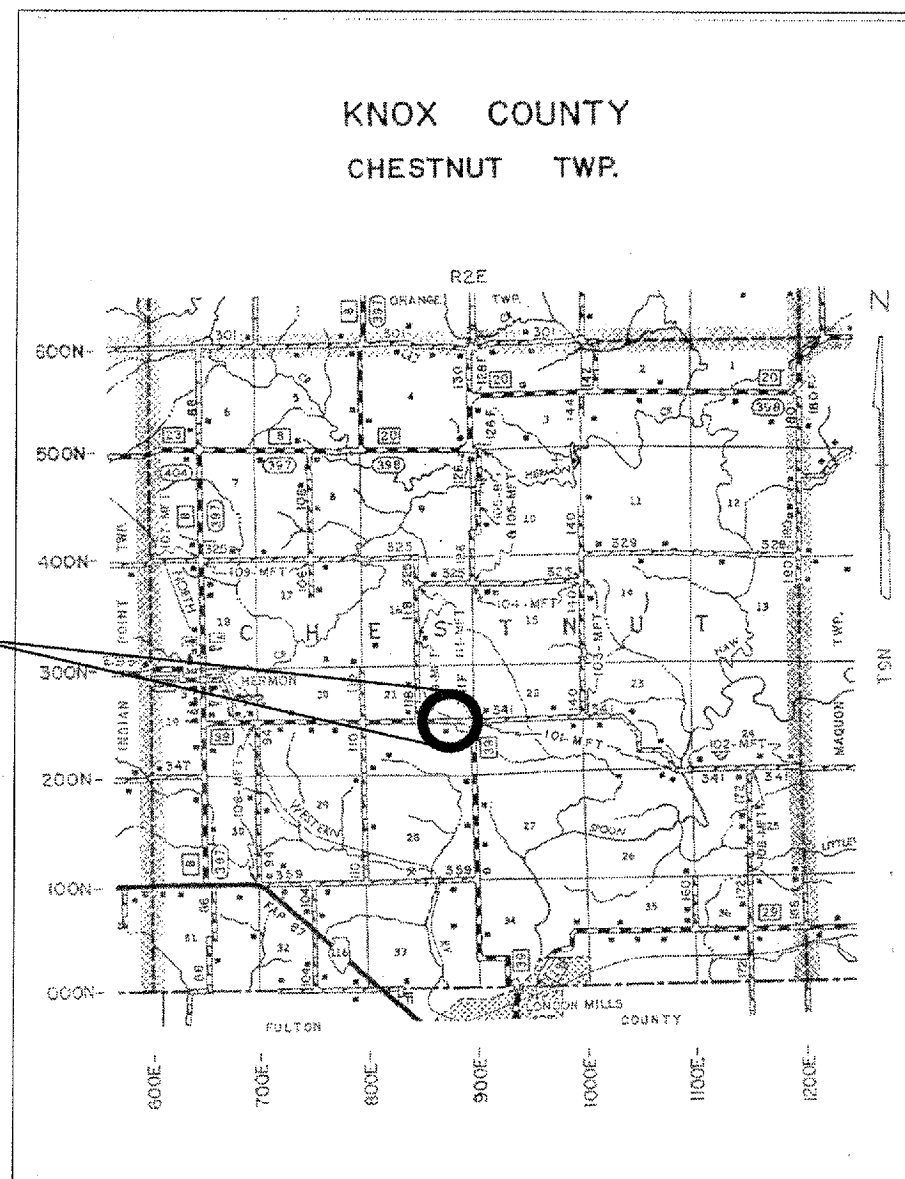
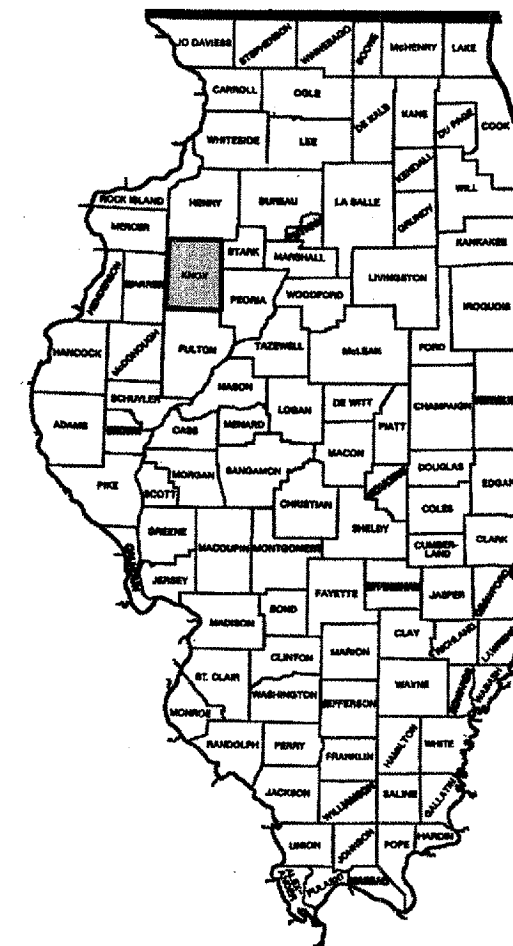
STATE OF ILLINOIS
DEPARTMENT OF TRANSPORTATION
BUREAU OF LOCAL ROADS & STREETS
BRIDGE REPLACEMENT AND REHABILITATION PROGRAM

COUNTY	ROUTE	CONTRACT	SHEET
KNOX	CH-39	89375	1 OF 7

CH-39 OVER TRIBUTARY TO SPOON RIVER
SECTION 05-00142-00-BR
PROJECT#BR-0S-095(122)
C-94-091-05

STANDARDS IN PLANS

- STD.000001-04 Standard Symbols, Abbreviations, and Patterns
- STD.280001-02 Temporary Erosion Control Systems
- STD.701006-02 Off Road Operations, ect
- STD.701011-01 Off Road Moving Operations, ect
- STD.701301-02 Lane Closure, 2L 2W, Short time Operations
- STD.702001-06 Traffic Control Devices
- BLR.21-6 Typical Applications of Traffic Control Devices
- STD.515001-02 Name Plate for Bridges



END CONSTRUCTION STA. 5+57
CONSTRUCT PROPOSED R.C.B.C.
CENTERLINE STA. 5+13
PROPOSED STRUCTURE #048-3343
BEGIN CONSTRUCTION STA. 4+70

SCALES:
PLAN: 1"=50'
PROFILE HOR.: 1"=50'
PROFILE VERT: 1"=10'
CROSS SECTIONS VERT: 1"=N/A
CROSS SECTIONS HOR.: 1"=N/A

Cat# 033082-00

DESIGN INFORMATION

NET LENGTH OF SECTION: 87.00' (0.016mi)
ADT= 275
FUNCTIONAL CLASSIFICATION: LOCAL ROAD
DESIGN SPEED: 40 MPH
DESIGN POLICY: RURAL
VARIANCES GRANTED: NONE
COMMITMENTS: NONE

J.U.L.I.E. 1-800-892-0123

DUANE J. RATERMANN
 IL. PROF. ENG. #062-051696
 EXPIRES 11/30/07
4/17/06

APPROVED *April 17* 2006
Duane J. Ratermann
 County Engineer

PASSED *APRIL 19* 2006
Libert Laballe
 District Four Engineer of Local Roads & Streets

Releasing For Bid Based On Limited Review
APR 19 2006
Joseph E. Owen
 DEPUTY DIRECTOR OF HIGHWAYS, REGION THREE ENGINEER
 STATE OF ILLINOIS
 DEPARTMENT OF TRANSPORTATION