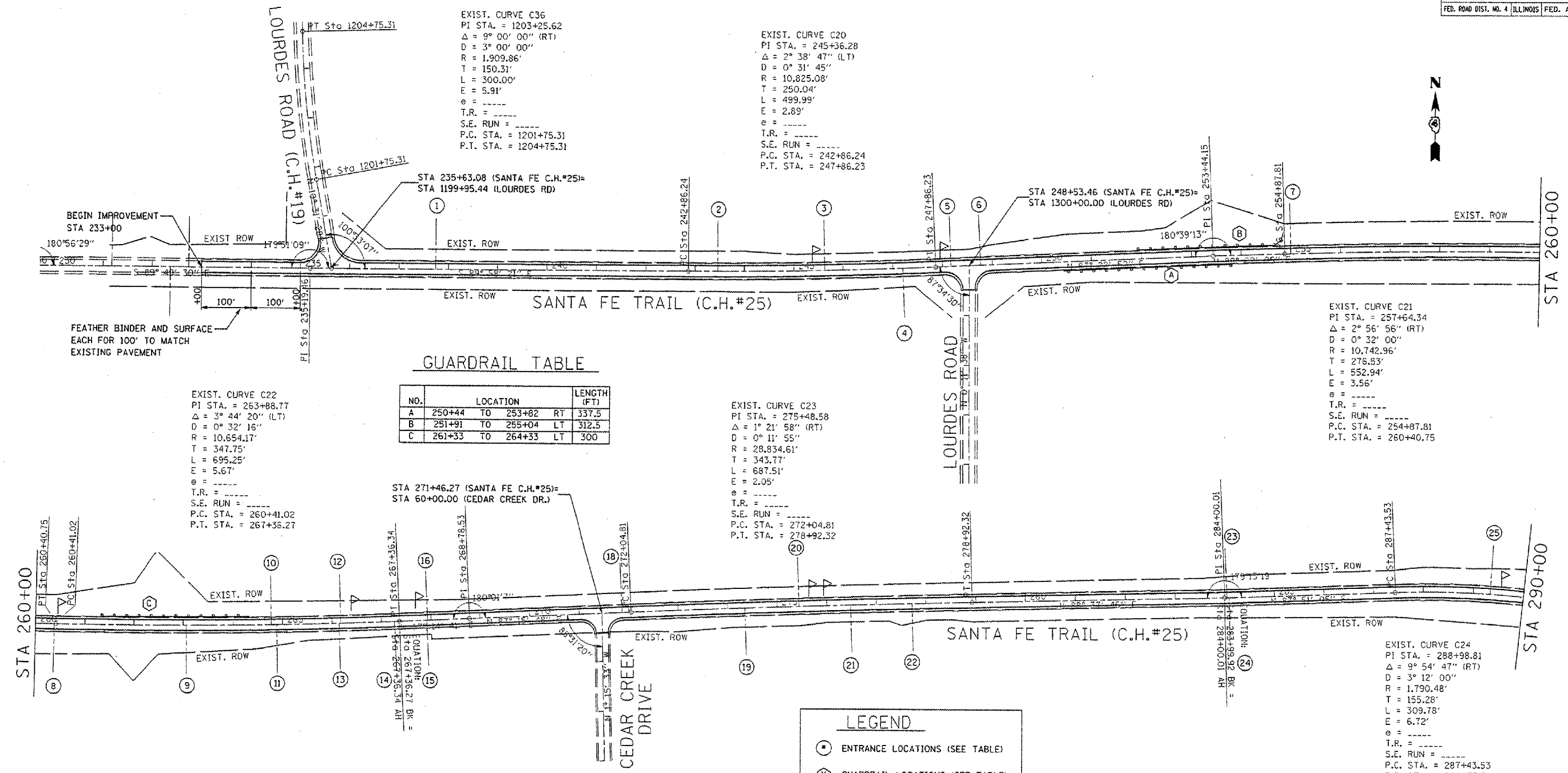


F.A. RTE.	SECTION	COUNTY	TOTAL SHEETS	SHEET NO.
2360	04-00058-08-FP	WOODFORD	8	4
STA. 230+00.00		TO STA. 290+00.00		
FED. ROAD DIST. NO. 4 ILLINOIS FED. AID PROJECT				



GUARDRAIL TABLE

NO.	LOCATION	LENGTH (FT)
A	250+44 TO 253+82 RT	337.5
B	251+91 TO 255+04 LT	312.5
C	261+33 TO 264+33 LT	300

ENTRANCE TABLES

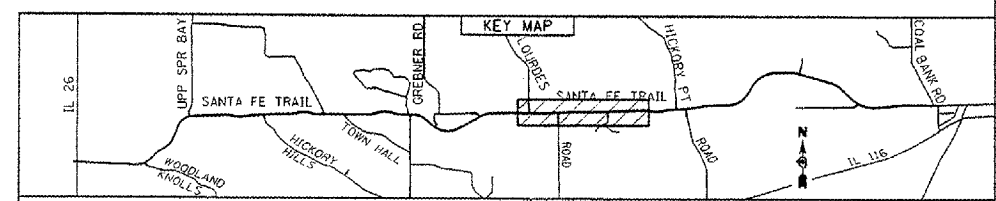
NO.	DESCRIPTION	LOCATION	WIDTH (FT)	SURFACE
1	FIELD ENTRANCE	237+74.35 LT	20	AGG
2	FIELD ENTRANCE	234+45.86 LT	18	AGG
3	PRIVATE ENTRANCE	245+61.88 LT	18	AGG
4	FIELD ENTRANCE	247+20.61 RT	19	AGG
5	PRIVATE ENTRANCE	248+16.89 LT	19	AGG
6	FIELD ENTRANCE	248+76.17 LT	13	AGG
7	FIELD ENTRANCE	255+00.36 LT	17	AGG
8	PRIVATE ENTRANCE	260+38.03 RT	20	ASPH
9	FIELD ENTRANCE	263+06.28 RT	16	AGG
10	FIELD ENTRANCE	264+76.89 LT	18	AGG

NO.	DESCRIPTION	LOCATION	WIDTH (FT)	SURFACE
11	PRIVATE ENTRANCE	264+87.61 RT	26	AGG
12	PRIVATE ENTRANCE	266+17.69 LT	15	ASPH
13	PRIVATE ENTRANCE	266+14.40 RT	24	ASPH
14	PRIVATE ENTRANCE	267+26.43 RT	23	ASPH
15	PRIVATE ENTRANCE	267+91.73 RT	23	ASPH
16	PRIVATE ENTRANCE	267+93.24 LT	20	CONC
17	N/A			
18	PRIVATE ENTRANCE	271+86.41 LT	18	AGG
19	FIELD ENTRANCE	274+34.88 RT	14	AGG
20	PRIVATE ENTRANCE	275+44.17 LT	15	ASPH

NO.	DESCRIPTION	LOCATION	WIDTH (FT)	SURFACE
21	PRIVATE ENTRANCE	276+48.50 RT	16	ASPH
22	FIELD ENTRANCE	277+72.03 RT	22	AGG
23	FIELD ENTRANCE	284+04.37 LT	18	ASPH
24	FIELD ENTRANCE	284+07.93 RT	30	ASPH
25	PRIVATE ENTRANCE	289+33.47 LT	19	ASPH

**LEGEND**

- ENTRANCE LOCATIONS (SEE TABLE)
- ⊗ GUARDRAIL LOCATIONS (SEE TABLE)
- ⏏ MAIL BOX TURNOUT



**WOODFORD COUNTY HIGHWAY DEPARTMENT**  
 DENNIS BACHMAN, P.E., COUNTY ENGINEER  
 301 S. Main St., P.O. Box 467  
 Roodnoke, IL 61561-0467  
 TEL: 309-923-2891  
 FAX: 309-923-7928

F.A.S. RTE. 2360  
 SECTION 04-00058-08-FP  
 SANTA FE TRAIL (C.H.#25)  
**PLAN SHEET**

SCALE: 1"=100'  
 DATE 3/1/06  
 DRAWN BY: JHH  
 CHECKED BY: DOB

PLOT DATE = 04/01/06  
 FILE NAME = WILKIN  
 USER NAME = T. MOSEY