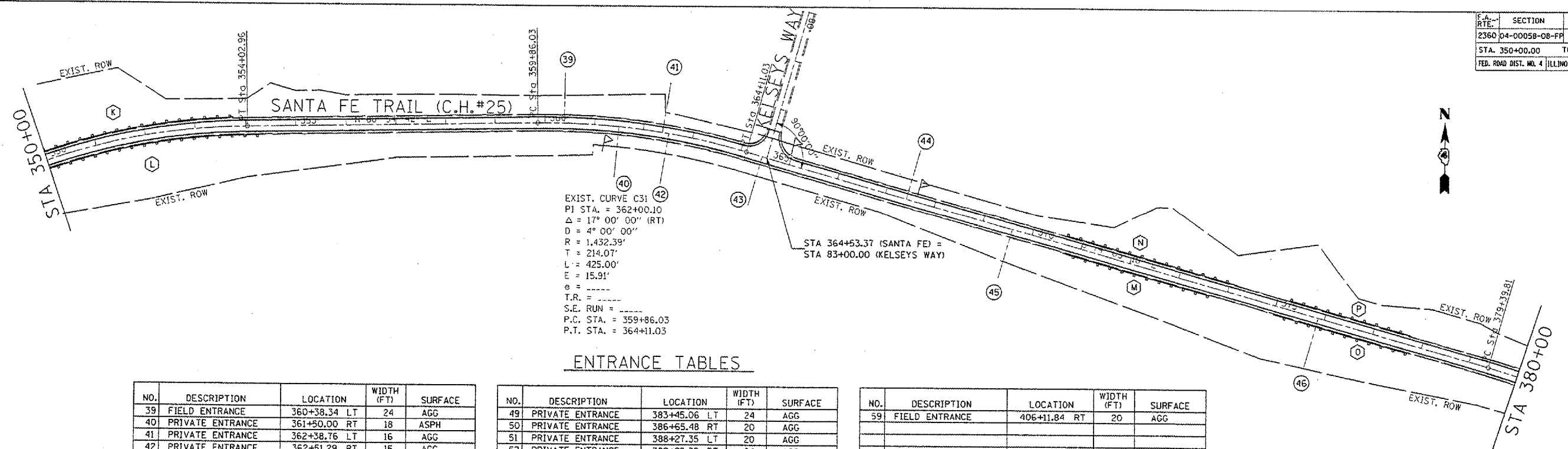


F.A. RTE.	SECTION	COUNTY	TOTAL SHEETS	SHEET NO.
2360	04-00058-08-FP	WOODFORD	8	6
STA. 350+00.00		TO STA. 410+00.00		
FED. ROAD DIST. NO. 4 ILLINOIS FED. AID PROJECT				

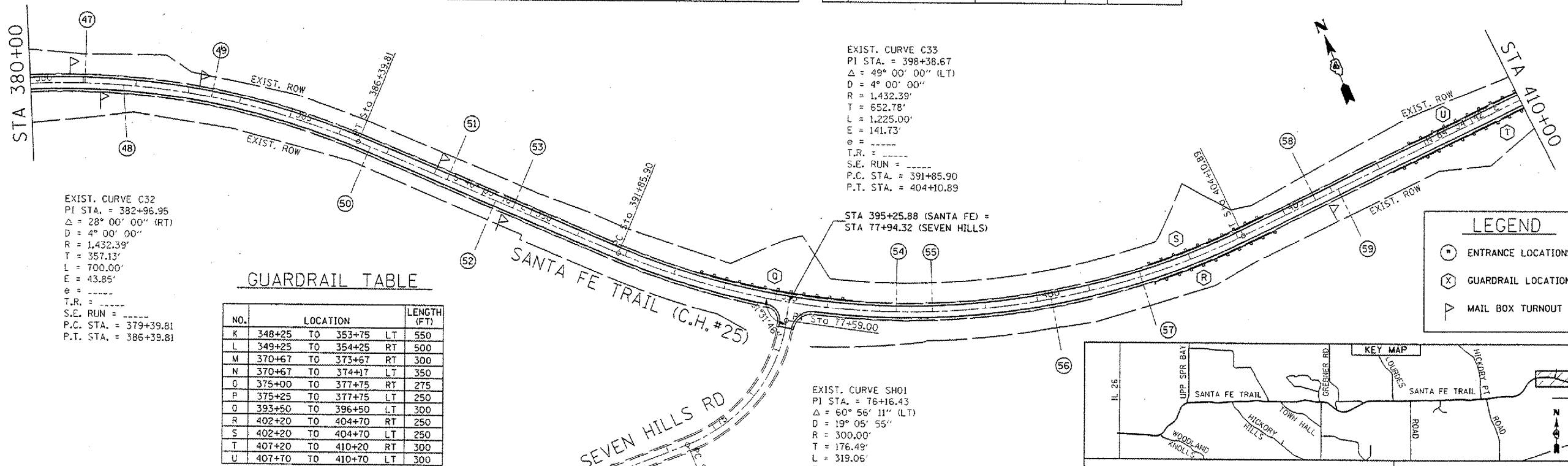


ENTRANCE TABLES

NO.	DESCRIPTION	LOCATION	WIDTH (FT)	SURFACE
39	FIELD ENTRANCE	360+38.34 LT	24	AGG
40	PRIVATE ENTRANCE	361+60.00 RT	18	ASPH
41	PRIVATE ENTRANCE	362+38.76 LT	16	AGG
42	PRIVATE ENTRANCE	362+51.29 RT	15	AGG
43	PRIVATE ENTRANCE	364+43.60 RT	24	AGG
44	PRIVATE ENTRANCE	367+43.06 LT	24	ASPH
45	FIELD ENTRANCE	369+59.72 RT	20	AGG
46	FIELD ENTRANCE	375+87.57 RT	24	ASPH
47	PRIVATE ENTRANCE	381+03.82 LT	36	ASPH
48	PRIVATE ENTRANCE	381+92.05 RT	48	ASPH

NO.	DESCRIPTION	LOCATION	WIDTH (FT)	SURFACE
49	PRIVATE ENTRANCE	383+45.06 LT	24	AGG
50	PRIVATE ENTRANCE	386+65.48 RT	20	AGG
51	PRIVATE ENTRANCE	388+27.35 LT	20	AGG
52	PRIVATE ENTRANCE	389+28.39 RT	24	AGG
53	PRIVATE ENTRANCE	389+64.28 LT	20	AGG
54	FIELD ENTRANCE	397+31.25 LT	20	AGG
55	FIELD ENTRANCE	398+00.00 LT	15	AGG
56	PRIVATE ENTRANCE	400+25.82 RT	44	ASPH
57	COMMERCIAL ENTRANCE	401+99.26 RT	24	AGG
58	PRIVATE ENTRANCE	405+64.38 LT	40	ASPH

NO.	DESCRIPTION	LOCATION	WIDTH (FT)	SURFACE
59	FIELD ENTRANCE	406+11.84 RT	20	AGG



EXIST. CURVE C32
 PI STA. = 382+96.95
 $\Delta = 28^\circ 00' 00''$ (RT)
 $D = 4^\circ 00' 00''$
 $R = 1,432.39'$
 $T = 357.13'$
 $L = 700.00'$
 $E = 43.85'$
 $\theta = \dots$
 $T.R. = \dots$
 $S.E. RUN = \dots$
 $P.C. STA. = 379+39.81$
 $P.T. STA. = 386+39.81$

GUARDRAIL TABLE

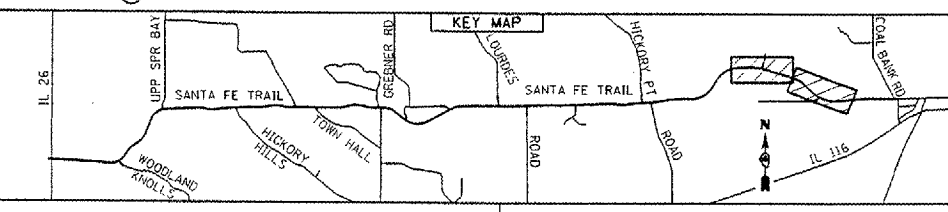
NO.	LOCATION	LENGTH (FT)
K	348+25 TO 353+75 LT	550
L	349+25 TO 354+25 RT	500
M	370+67 TO 373+67 RT	300
N	370+67 TO 374+17 LT	350
O	375+00 TO 377+75 RT	275
P	375+25 TO 377+75 LT	250
Q	393+50 TO 396+50 LT	300
R	402+20 TO 404+70 RT	250
S	402+20 TO 404+70 LT	250
T	407+20 TO 410+20 RT	300
U	407+70 TO 410+70 LT	300

EXIST. CURVE C33
 PI STA. = 398+38.67
 $\Delta = 49^\circ 00' 00''$ (LT)
 $D = 4^\circ 00' 00''$
 $R = 1,432.39'$
 $T = 652.78'$
 $L = 1,225.00'$
 $E = 141.73'$
 $\theta = \dots$
 $T.R. = \dots$
 $S.E. RUN = \dots$
 $P.C. STA. = 391+85.90$
 $P.T. STA. = 404+10.89$

EXIST. CURVE SH01
 PI STA. = 76+16.43
 $\Delta = 60^\circ 56' 11''$ (LT)
 $D = 19^\circ 05' 55''$
 $R = 300.00'$
 $T = 176.49'$
 $L = 319.06'$
 $E = 48.06'$
 $\theta = \dots$
 $T.R. = \dots$
 $S.E. RUN = \dots$
 $P.C. STA. = 74+39.94$
 $P.T. STA. = 77+59.00$

LEGEND

- ⊙ ENTRANCE LOCATIONS (SEE TABLE)
- ⊗ GUARDRAIL LOCATIONS (SEE TABLE)
- ⏏ MAIL BOX TURNOUT



WOODFORD COUNTY HIGHWAY DEPARTMENT
 DENNIS BACHMAN, P.E., COUNTY ENGINEER
 301 S. Main St., P.O. Box 467
 Roanoke, IL 61561-0467
 TEL: 309-923-2891
 FAX: 309-923-7928

F.A.S. RTE. 2360
 SECTION 04-00058-08-FP
 SANTA FE TRAIL (C.H.#25)
PLAN SHEET

SCALE: 1"=100'
 DATE 3/1/06
 DRAWN BY: JH
 CHECKED BY: DDB

PLT DATE: 3/1/06
 DATE: 3/1/06
 USER: JH
 USER: JH