

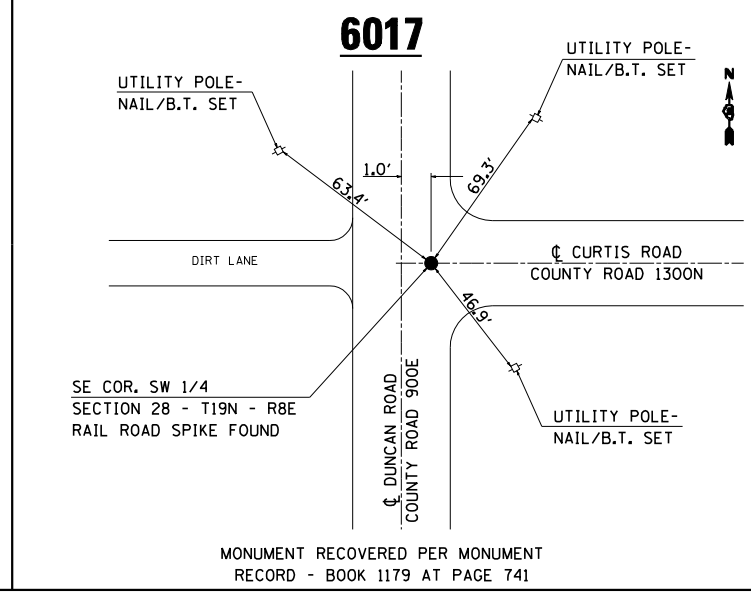
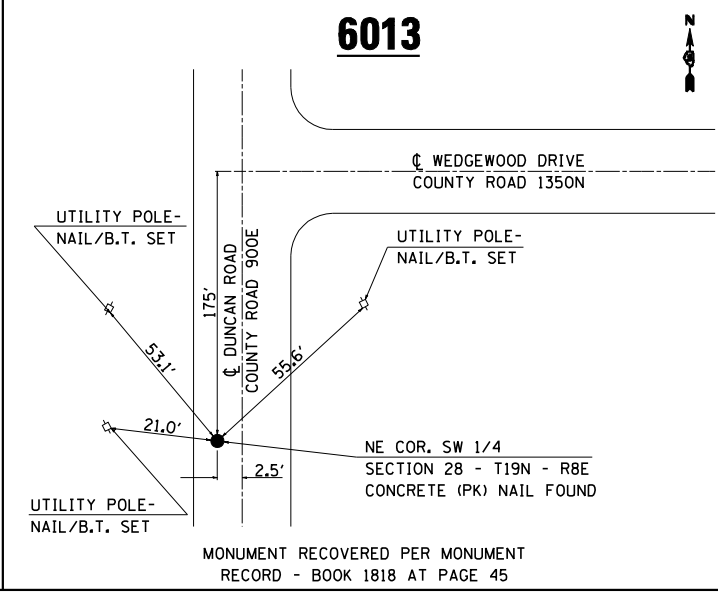
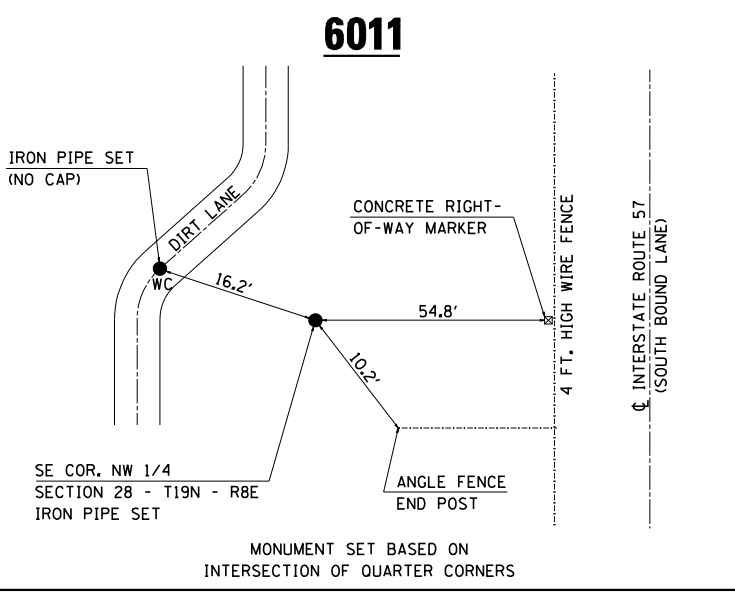
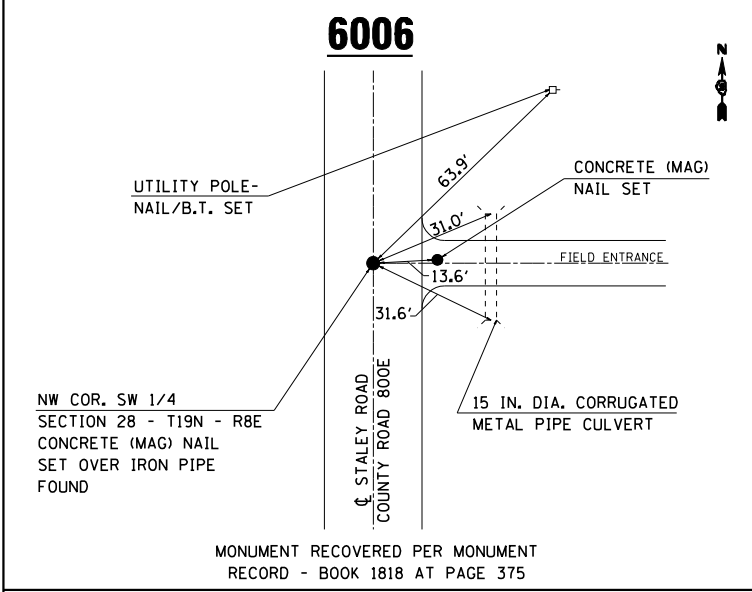
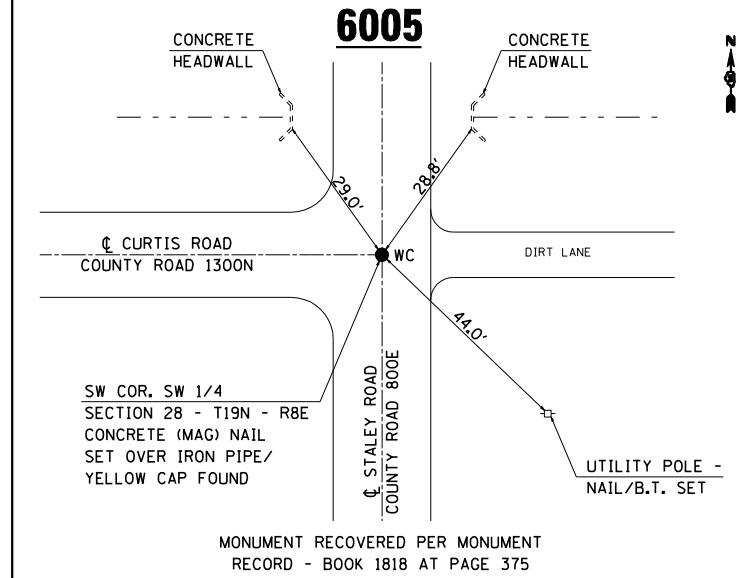
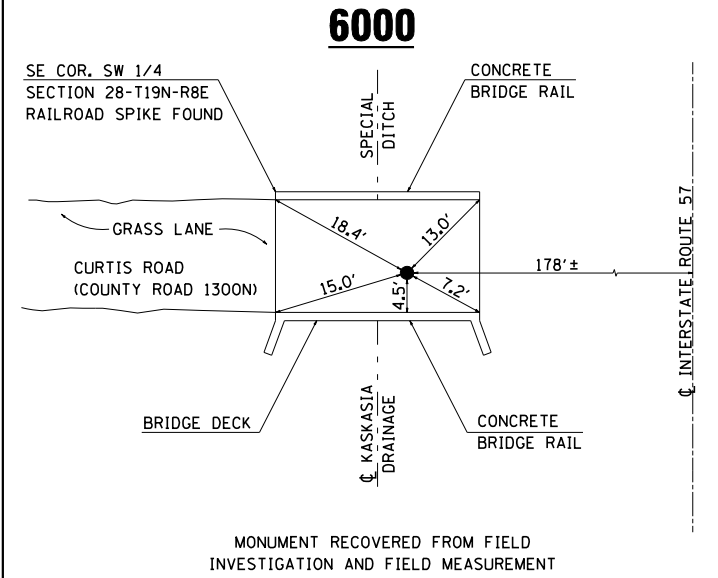
BENCHMARKS & TIE POINTS

F.A.I. RTE.	SECTION	COUNTY	TOTAL SHEETS	SHEET NO.
57	10-32HB-3,K	CHAMPAIGN	352	38

CONTRACT NO. 90758

BENCHMARKS

- BM #4516-16 CHISELED "X" ON N.E. WINGWALL OF ABANDONED BRIDGE WEST OF I-57 @ APPROXIMATE STA. 26+50 ELEV 698.115
- BM #4516-20 CHISELED "SQUARE" ON CONCRETE PIPE AT NW QUAD OF CURTIS & DUNCAN INTERSECTION ELEV 733.57
- BM #4516-21 CHISELED "SQUARE" ON HEADWALL AT SE QUAD OF CURTIS & STALEY INTERSECTION ELEV 698.965
- BM #4516-22 PERMANENT SURVEY MARKER AT I-57 STA. 282+00 ELEV 698.545
- BM #4516-23 CHISELED "SQUARE" ON SW CORNER OF CONCRETE HEADWALL AT I-57 STA. 314+00 ELEV 698.63
- BM #4516-24 PERMANENT SURVEY MARKER AT I-57 STA. 295+00 ELEV 696.30



IRON PIPE SET ARE 30-INCH LONG, 1/2 INCH DIAMETER WITH AN ALUMINUM CAP STAMPED "ILS 2006-2207"; BRASS TAGS (B.T.) SET ARE STAMPED "2006-2207"; WC = WITNESS CORNER

ILLINOIS DEPARTMENT OF TRANSPORTATION

BENCHMARKS & TIE POINTS