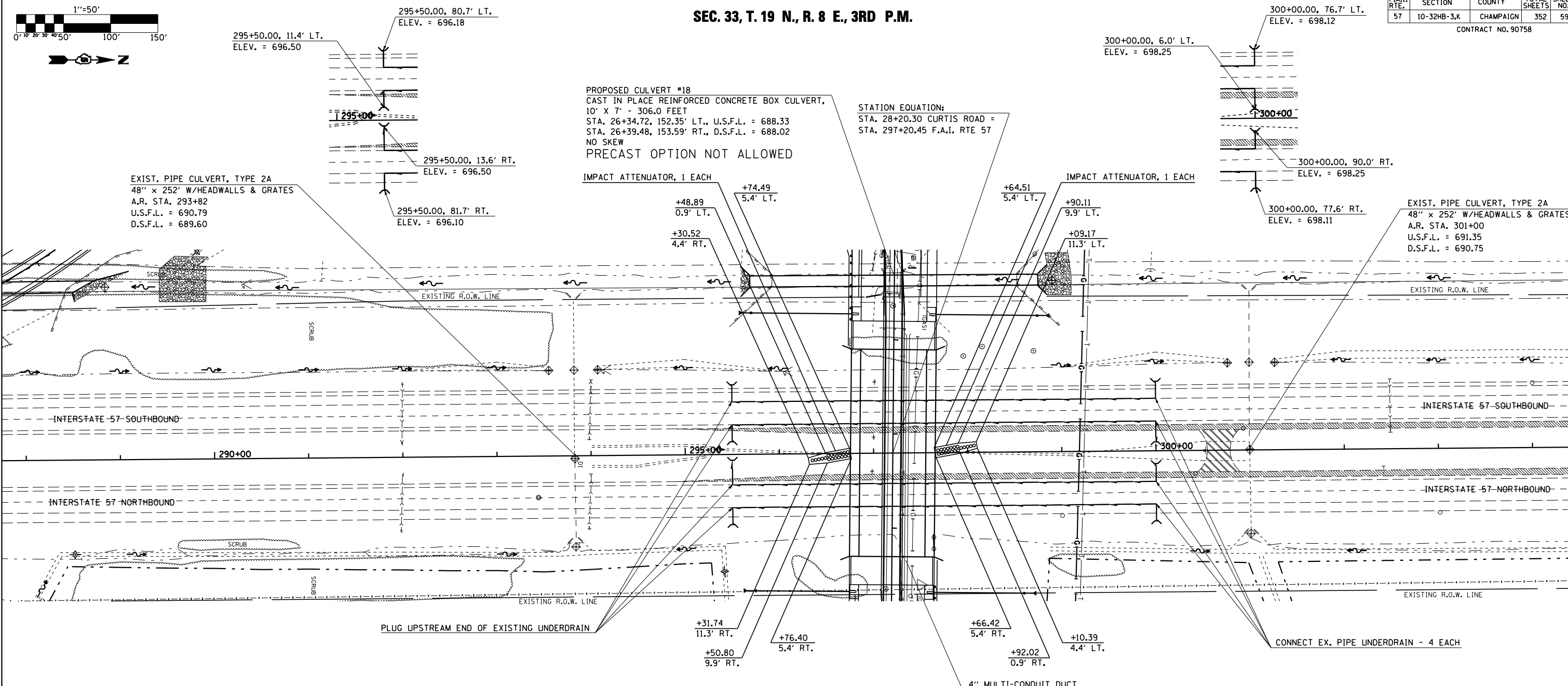


SEC. 33, T. 19 N., R. 8 E., 3RD P.M.

F.A.I. RTE.	SECTION	COUNTY	TOTAL SHEETS	SHEET NO.
57	10-32HB-3,K	CHAMPAIGN	352	59

CONTRACT NO. 90758



INLET & PIPE PROTECTION ◊
 STA. 293+83, 3' RT.
 STA. 293+83, 97' RT.
 STA. 301+00, 1' LT.
 STA. 301+00, 89' RT.

PAVEMENT REMOVAL (diagonal hatching)
PAVED SHOULDER REMOVAL (cross-hatching)
STONE RIPRAP CLASS A-4, SEE DETAIL (stippled pattern)

PIPE UNDERDRAINS 4 INCH (SPECIAL) ———
 STA. 295+50 NB RT. - 18.0 FEET
 STA. 300+00 NB RT. - 18.0 FEET
 STA. 295+50 NB LT. - 26.0 FEET
 STA. 300+00 NB LT. - 19.0 FEET
 STA. 295+50 SB RT. - 18.0 FEET
 STA. 300+00 SB RT. - 22.0 FEET
 STA. 295+50 SB LT. - 18.0 FEET
 STA. 300+00 SB LT. - 18.0 FEET

TEMPORARY DITCH CHECKS ◊
 STA. 288+50 RT.
 STA. 295+36 MEDIAN/AGGREGATE

CONCRETE HEADWALL FOR PIPE DRAINS ()
 STA. 295+50 NB RT.
 STA. 300+00 NB RT.
 STA. 295+50 NB LT.
 STA. 300+00 NB LT.
 STA. 295+50 SB RT.
 STA. 300+00 SB RT.
 STA. 295+50 SB LT.
 STA. 300+00 SB LT.

PIPE UNDERDRAINS 4 INCH ———
 STA. 295+50 TO STA. 300+00 NB RT. - 450.0 FEET
 STA. 295+50 TO STA. 300+00 NB LT. - 450.0 FEET
 STA. 295+50 TO STA. 300+00 SB RT. - 450.0 FEET
 STA. 295+50 TO STA. 300+00 SB LT. - 450.0 FEET

WATERWAY INFORMATION
CULVERT #18

I-57 SOUTH BOUND

DRAINAGE AREA = 575 ACRES		LOW GRADE ELEV. = 699.67		e STA. 294+00					
FLOOD	FREQ. YR.	Q C.F.S. (m ³ /sec.)	OPENING SQ. FT. (m ²)		HEAD - FT. (m)		HEADWATER EL.		
			EXIST.	PROP.	EXIST.	PROP.	EXIST.	PROP.	
DESIGN	50	256	N/A	70	695.2	N/A	0.5	N/A	695.7
BASE	100	290	N/A	70	695.6	N/A	0.5	N/A	696.0
OVERTOPPING									
MAX. CALC.	500	371	N/A	70	696.4	N/A	0.7	N/A	697.1

NOTE: Cost of plugging existing underdrain shall be included in the cost for PIPE UNDERDRAINS, 4" and no additional compensation will be allowed.

ILLINOIS DEPARTMENT OF TRANSPORTATION

I-57 PLAN