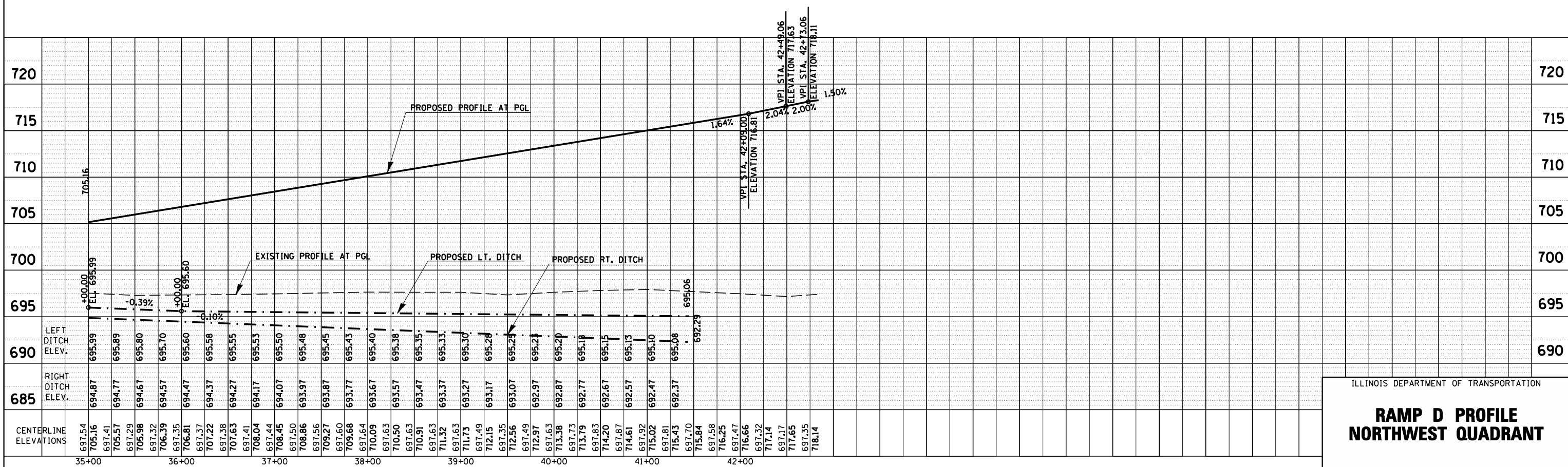
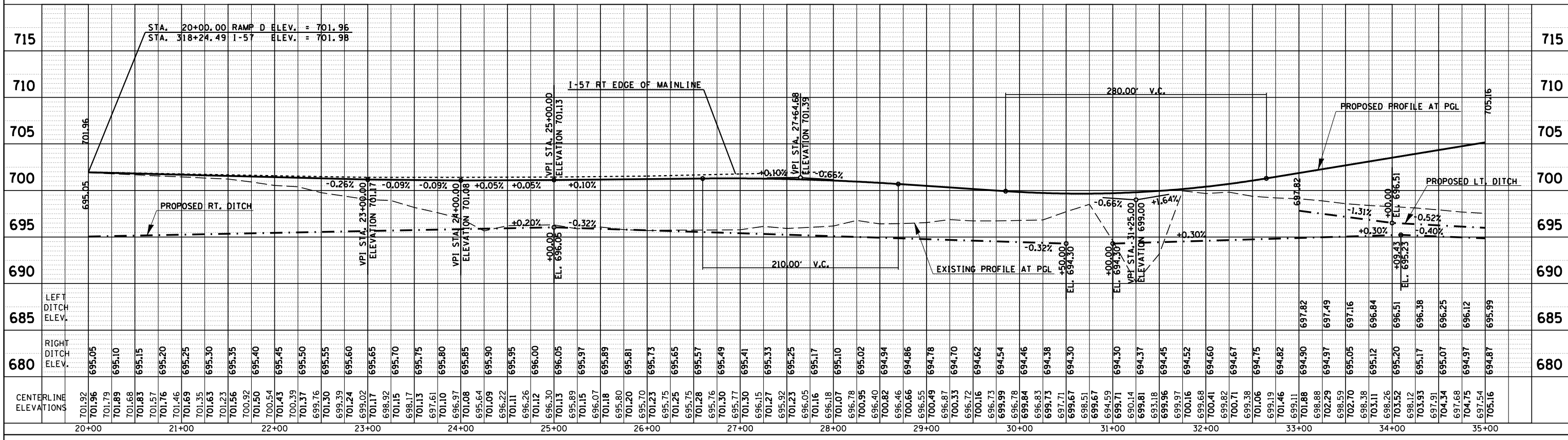


F.A.I. RTE.	SECTION	COUNTY	TOTAL SHEETS	SHEET NO.
57	10-32HB-3,K	CHAMPAIGN	352	72
STA.		TO STA.		
FED. ROAD DIST. NO.		ILLINOIS FED. AID PROJECT		



ILLINOIS DEPARTMENT OF TRANSPORTATION  
**RAMP D PROFILE  
 NORTHWEST QUADRANT**

PROFILE	SURVEYED	BY	DATE
NOTE BOOK	PLOTTED		
NO.	CHECKED		
	BY		
	STRUCTURE		
	NOTATIONS		
	CHRD		