

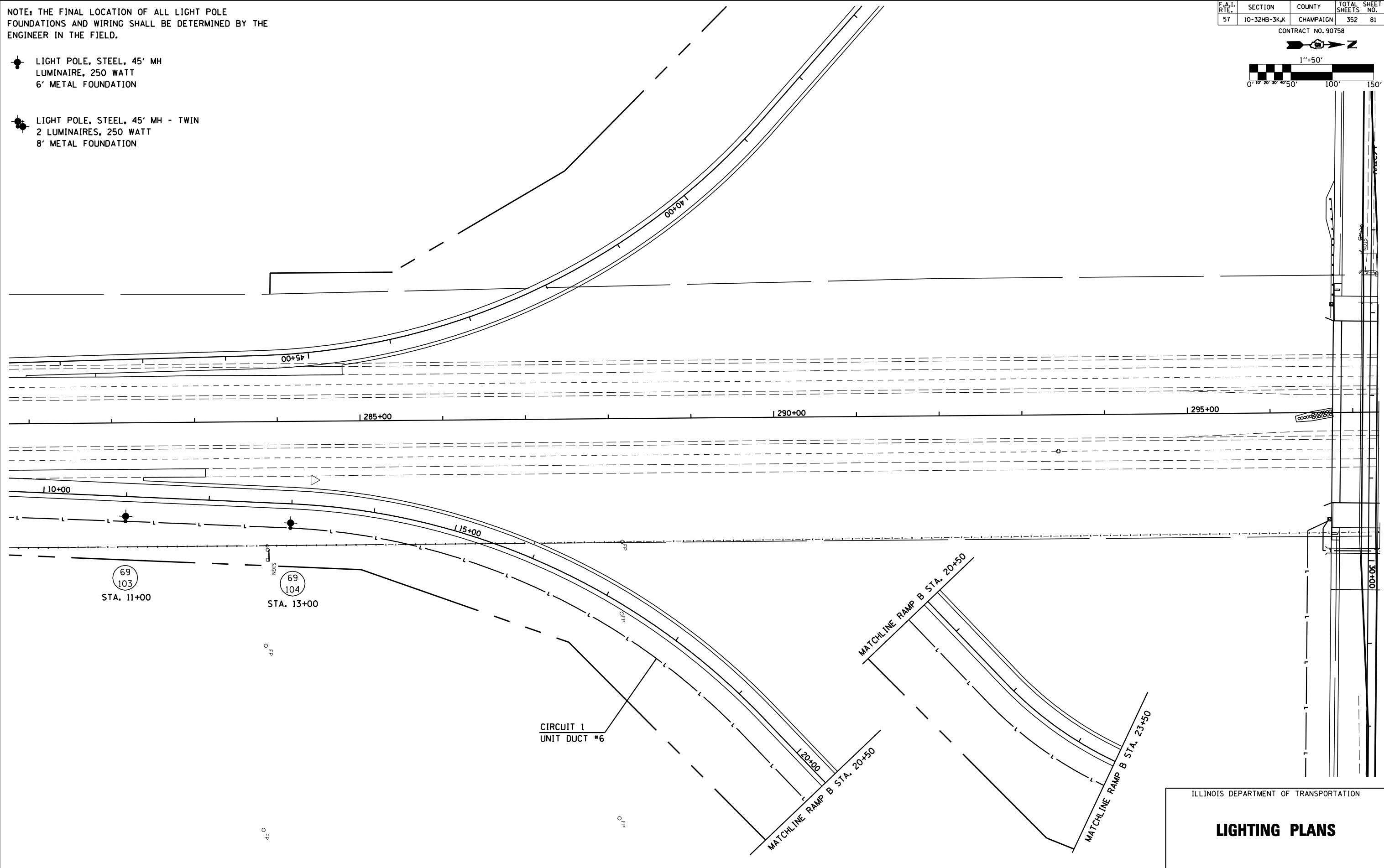
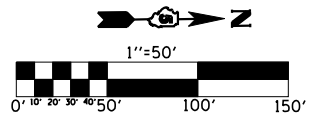
NOTE: THE FINAL LOCATION OF ALL LIGHT POLE FOUNDATIONS AND WIRING SHALL BE DETERMINED BY THE ENGINEER IN THE FIELD.

● LIGHT POLE, STEEL, 45' MH
LUMINAIRE, 250 WATT
6' METAL FOUNDATION

● LIGHT POLE, STEEL, 45' MH - TWIN
2 LUMINAIRES, 250 WATT
8' METAL FOUNDATION

F.A.I. RTE.	SECTION	COUNTY	TOTAL SHEETS	SHEET NO.
57	10-32HB-3K,K	CHAMPAIGN	352	81

CONTRACT NO. 90758



ILLINOIS DEPARTMENT OF TRANSPORTATION

LIGHTING PLANS