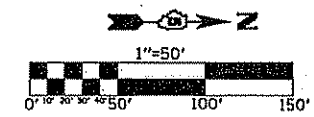


F.A.I. RTE.	SECTION	COUNTY	TOTAL SHEETS	SHEET NO.
57	10-32HB-3K,K	CHAMPAIGN	352	93

CONTRACT NO. 90758



SIGNING BILL OF MATERIALS

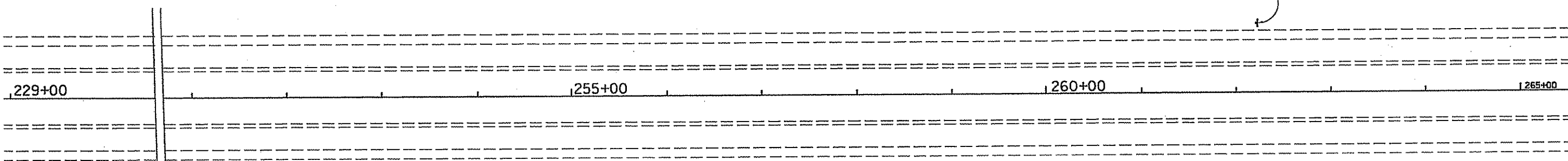
CODE NO.	DESCRIPTION	UNIT	QUANTITY
72000100	SIGN PANEL, TYPE 1	SQ FT	362
72000200	SIGN PANEL, TYPE 2	SQ FT	176
72000300	SIGN PANEL, TYPE 3	SQ FT	2090.0
73000100	STRUCTURAL STEEL SIGN SUPPORT - BREAKAWAY	POUND	842.0
73400100	WOOD SIGN SUPPORT	FOOT	36.0
72700100	CONCRETE FOUNDATIONS	CU YD	17413.0

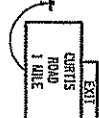
72700100
 73000100
 73400100

1,538.0
 12,923.0
 812.0
 26.0

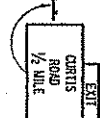
CONSTRUCTION TYPE CODE: Y002-1C HIGHWAY SIGNING
SEE SCHEDULE OF QUANTITIES FOR SIGNING SCHEDULE

STA. 262+20
 18.0' O/S LT
 6.0 M.H.
 R2-1(65) 48"X60"
 R2-1102(45) 48"X36"
 20' WOOD SIGN SUPPORT





 ① STA. 229+45
 35.0' O/S RT
 5.0 M.H.
 SIGN PANEL - TYPE 3
 13' X 8.5'
 WB X 18 X 18.75 AND
 WB X 18 X 16 STEEL POSTS
 CONCRETE FOUNDATIONS - 1.4 CU. YD.



 ② STA. 255+85
 35.0' O/S RT
 5.0 M.H.
 SIGN PANEL - TYPE 3
 13' X 8.5'
 W10 X 22 X 21.75 AND
 W10 X 22 X 20 STEEL POSTS
 CONCRETE FOUNDATIONS - 2.36 CU.YD.

NOTE:
 O/S - DISTANCE FROM EDGE OF DRIVING LANE TO NEAR EDGE OF SIGN
 M.H. - HEIGHT FROM EDGE OF DRIVING LANE TO BOTTOM OF SIGN

ILLINOIS DEPARTMENT OF TRANSPORTATION

SIGNING PLANS