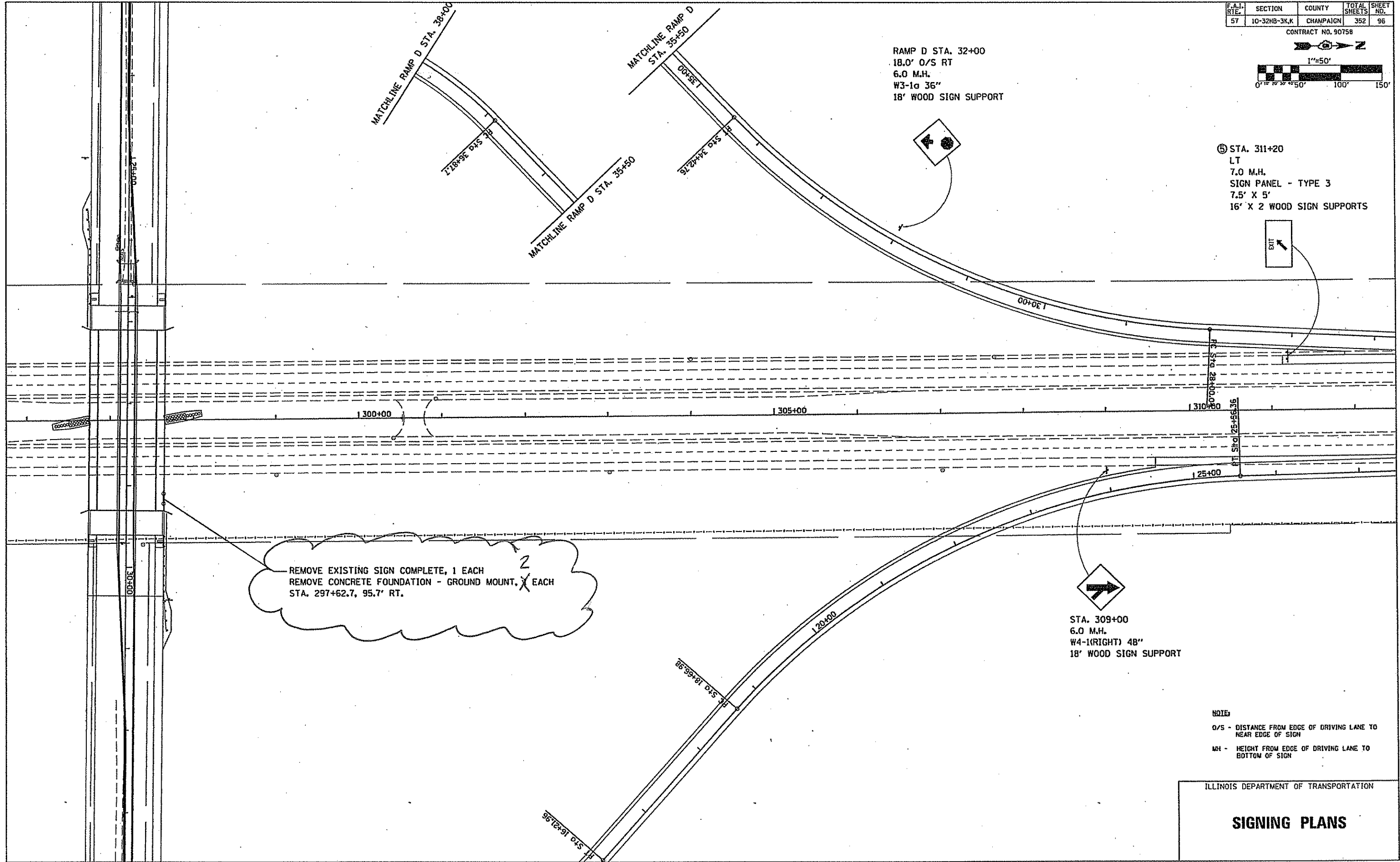
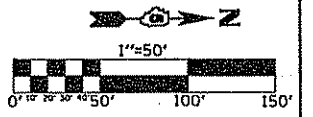


F.A.I. RITE	SECTION	COUNTY	TOTAL SHEETS	SHEET NO.
57	10-32NB-3K,K	CHAMPAIGN	352	96

CONTRACT NO. 9075B



RAMP D STA. 32+00
 18.0' O/S RT
 6.0 M.H.
 W3-1a 36"
 18' WOOD SIGN SUPPORT

⑤ STA. 311+20
 LT
 7.0 M.H.
 SIGN PANEL - TYPE 3
 7.5' X 5'
 16' X 2 WOOD SIGN SUPPORTS

REMOVE EXISTING SIGN COMPLETE, 1 EACH
 REMOVE CONCRETE FOUNDATION - GROUND MOUNT, X EACH
 STA. 297+62.7, 95.7' RT.

STA. 309+00
 6.0 M.H.
 W4-1(RIGHT) 48"
 18' WOOD SIGN SUPPORT

NOTES
 O/S - DISTANCE FROM EDGE OF DRIVING LANE TO NEAR EDGE OF SIGN
 MH - HEIGHT FROM EDGE OF DRIVING LANE TO BOTTOM OF SIGN

ILLINOIS DEPARTMENT OF TRANSPORTATION
SIGNING PLANS