

Notes:

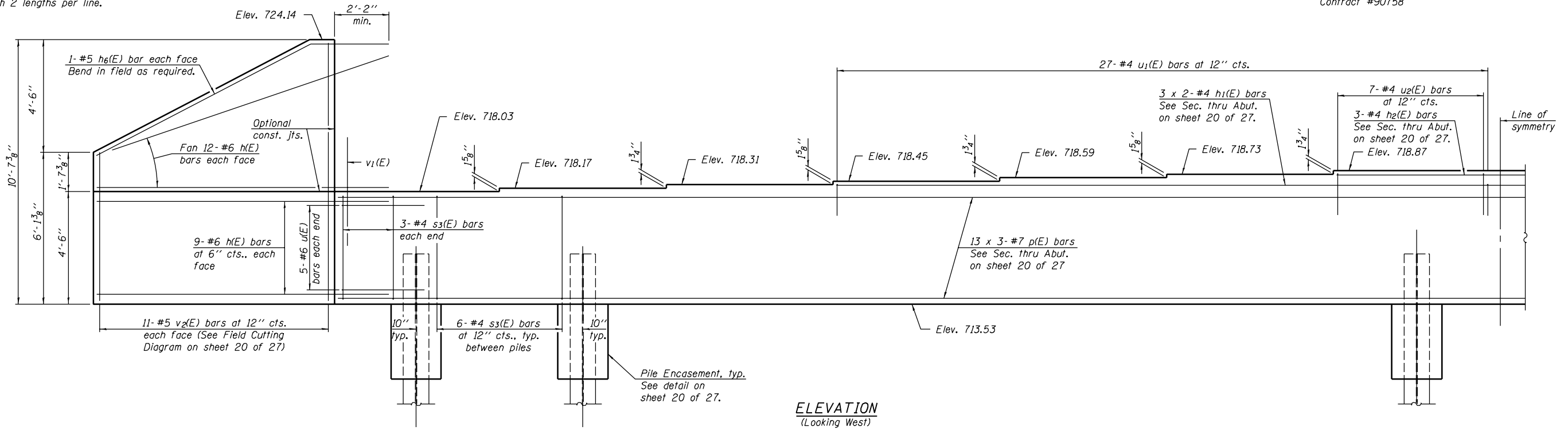
Pour steps monolithically with cap.
 Reinforcement bars designated (E) shall be epoxy coated.
 See sheet 20 of 27 for additional abutment details.
 Bars indicated thus 3 x 2-#4 etc. indicates 3 lines of bars with 2 lengths per line.

STATE OF ILLINOIS
 DEPARTMENT OF TRANSPORTATION

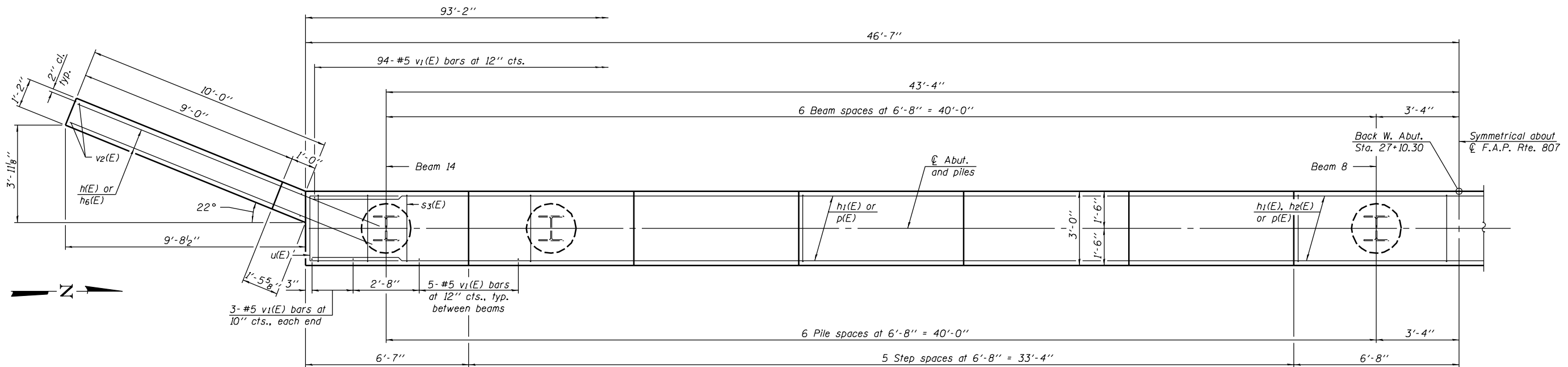
ROUTE NO. F.A.I. 57	SECTION 10-32HB-3.K	COUNTY CHAMPAIGN	TOTAL SHEETS 352	SHEET NO. 127
FED. ROAD DIST. NO. 7		ILLINOIS FED. AID PROJECT-		

SHEET NO. 18
 27 SHEETS

Contract #90758



ELEVATION
 (Looking West)



PLAN

DESIGNED	Gholam R. Ahanchi
CHECKED	Rebecca L. Tharp
DRAWN	Michael B. Mossman
CHECKED	G.R.A. / R.L.T.

April 28, 2006
 EXAMINED *Thomas J. Domagala*
 ENGINEER OF BRIDGE DESIGN
 PASSED *Ralph E. Anderson*
 ENGINEER OF BRIDGES AND STRUCTURES

MINIMUM BAR LAP

#4 bar = 1'-8"
 #7 bar = 3'-5"

WEST ABUTMENT
 F.A.I. ROUTE 57 SEC. 10-32HB-3.K
 CHAMPAIGN COUNTY
 STATION 297+20.45
 STRUCTURE NO. 010-0272