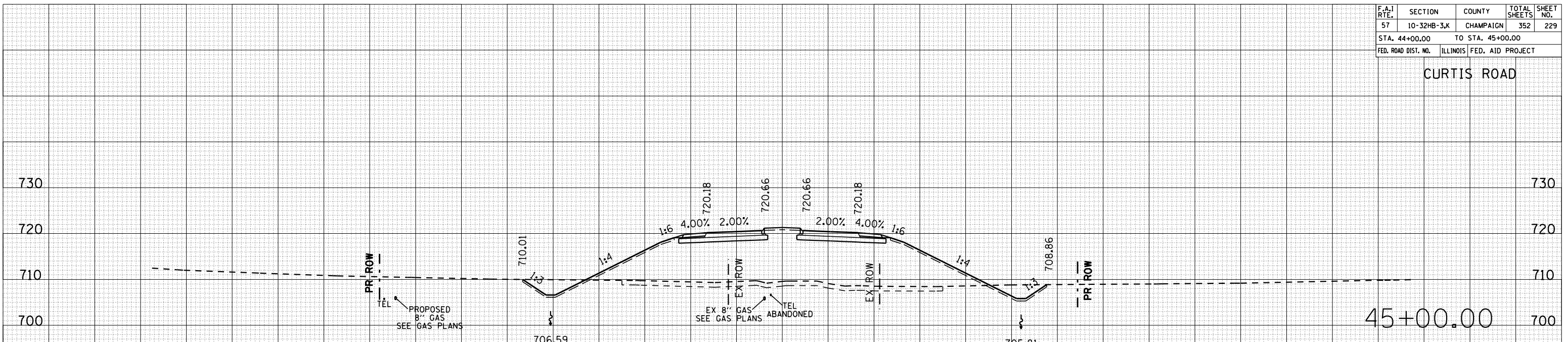


F.A.I. RTE.	SECTION	COUNTY	TOTAL SHEETS	SHEET NO.
57	10-32HB-3,K	CHAMPAIGN	352	229
STA. 44+00.00		TO STA. 45+00.00		
FED. ROAD DIST. NO.		ILLINOIS FED. AID PROJECT		

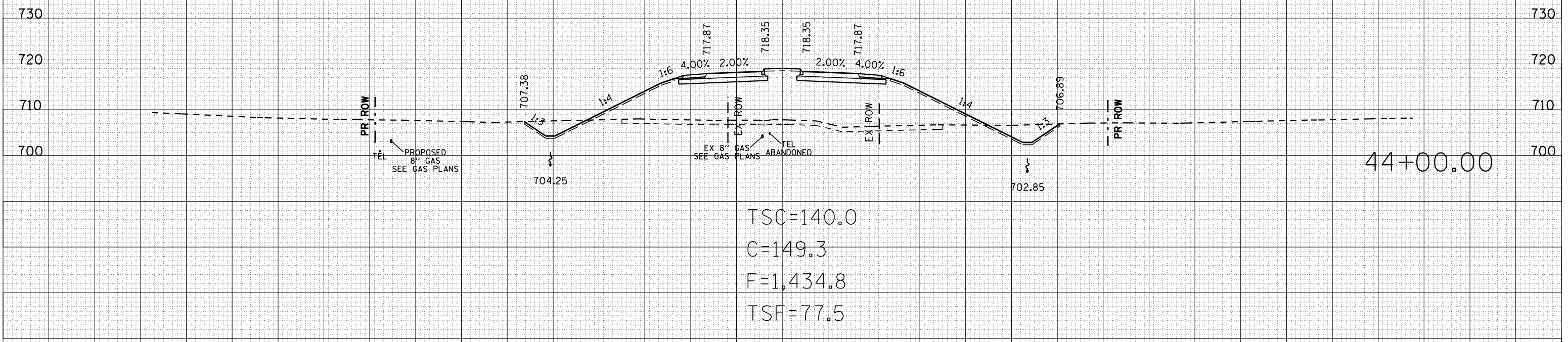
CURTIS ROAD

BY	DATE

BY	DATE



TSC=140.0
 C=122.9
 F=1,503.7
 TSF=75.0



TSC=140.0
 C=149.3
 F=1,434.8
 TSF=77.5