

80 120 160 200 240 280 320 360 400 440 480 520 560 600

F.A.I. RTE.	SECTION	COUNTY	TOTAL SHEETS	SHEET NO.
57	10-32HB-3,K	CHAMPAIGN	352	289
STA. 300+00.00		TO STA. 303+00.00		
FED. ROAD DIST. NO.	ILLINOIS	FED. AID PROJECT		

I-57 EAST INFIELDS

BY	DATE

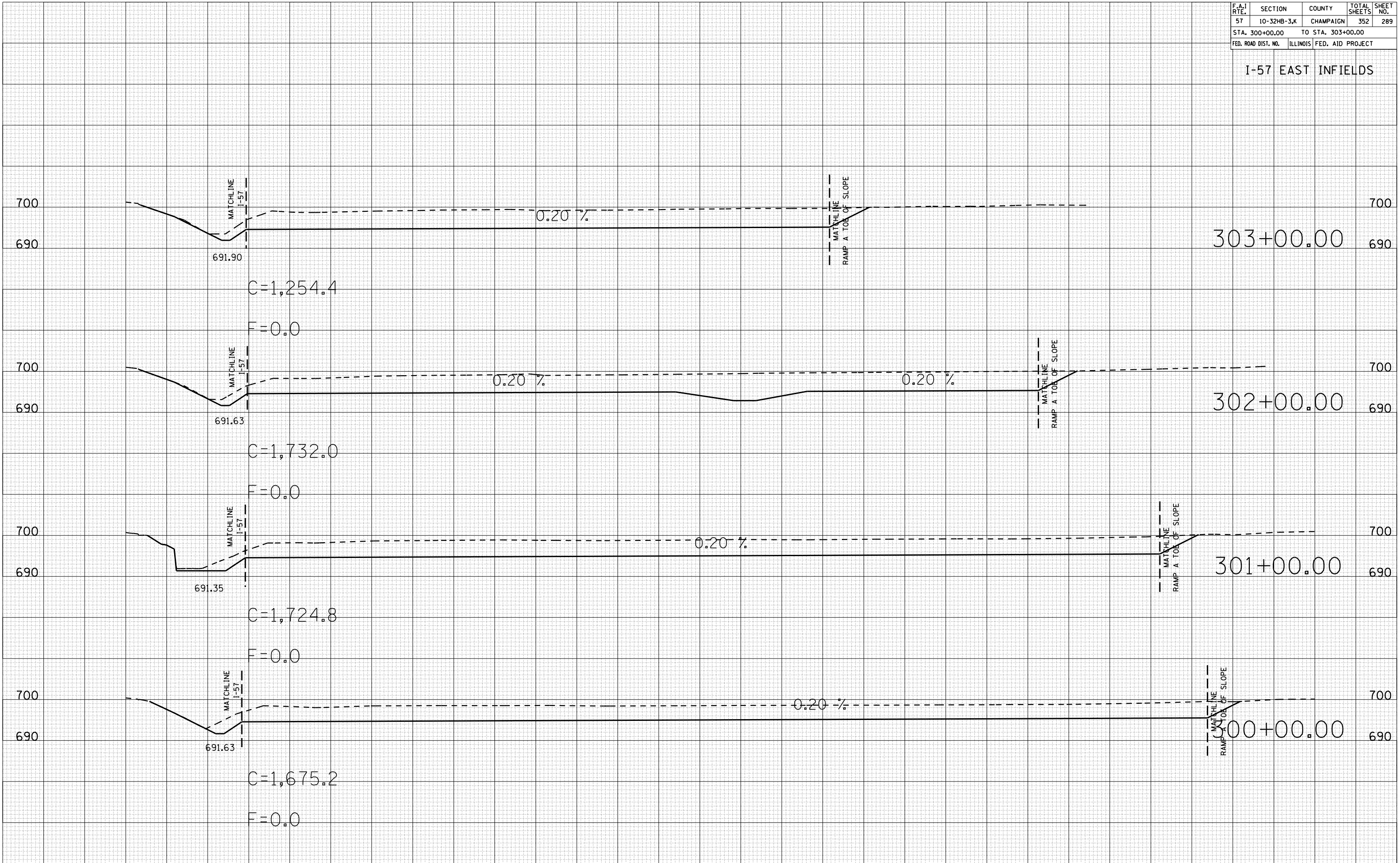
  

FINAL SURVEY	SURVEYED	PLOTTED	DATE	NO.

BY	DATE

ORIGINAL SURVEY	SURVEYED	PLOTTED	DATE	NO.



80 120 160 200 240 280 320 360 400 440 480 520 560 600