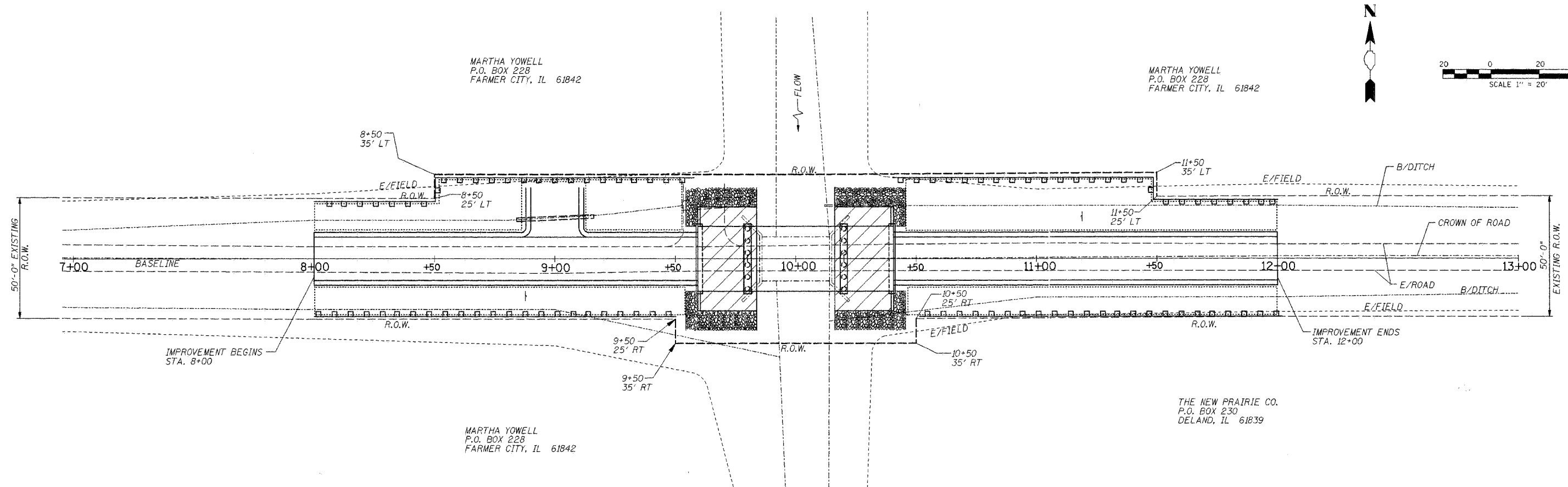


ROUTE NO.	SECTION	COUNTY	SHEET	SHEET
TR 43	*	PIATT	11	10
FED. ROAD DIST. NO. 7		ILL. ROAD PROJ. NO.		FED. AID PROJECT

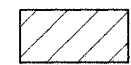
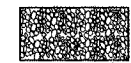

*04-04124-00-BR

INTENDED SEQUENCE

1. PLACEMENT OF PERIMETER EROSION CONTROL BARRIER PRIOR TO COMMENCEMENT OF ANY WORK. SEE STANDARD 280001.
2. CONSTRUCTION OF NEW SUBSTRUCTURE.
3. REMOVAL OF THE EXISTING STRUCTURE.
4. CONSTRUCTION OF THE NEW SUPERSTRUCTURE.
5. THE PLACEMENT AND MAINTENANCE OF TEMPORARY EROSION CONTROLS.
6. FINAL GRADING AND SHAPING INCLUDING PLACEMENT OF AGGREGATE BASE COURSE & BITUMINOUS SURFACE.
7. REMOVAL AND PROPER CLEAN UP OF TEMPORARY EROSION CONTROLS.
8. PLACEMENT OF PERMANENT EROSION CONTROLS.



PERMANENT EROSION CONTROL

-  FABRIC FORMED CONCRETE REVETMENT MAT
-  STONE RIPRAP, CLASS A3
-  SEEDING, CL. 2 (SPECIAL)

TEMPORARY EROSION CONTROL

-  PERIMETER EROSION BARRIER

TEMPORARY EROSION CONTROL

THE FOLLOWING QUANTITIES ARE ESTIMATES ONLY. ACTUAL QUANTITIES FOR EROSION CONTROL WILL BE DETERMINED BY THE ENGINEER IN THE FIELD, AND THERE WILL BE NO CHANGE IN PRICE DUE TO A CHANGE IN PLAN QUANTITY

TEMPORARY EROSION CONTROL BILL OF MATERIALS		
ITEM	UNIT	QUANTITY
TEMPORARY EROSION CONTROL SEEDING	POUND	150
PERIMETER EROSION BARRIER	FOOT	640